



Light Efficiency:

48 Lumen/Watt

Light Quality:

CRI: 71.3

Color Temperature:

6820 K

Output: 380 lm

Peak: 1552 cd

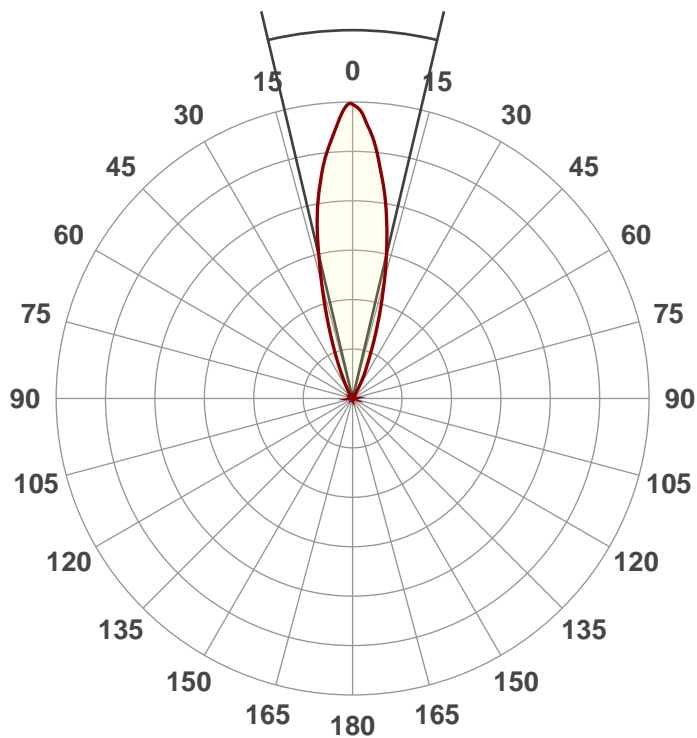
Power: 7.9 W

PF: 0.56



Beam Angle

26.6°



Product Name:

UB 6H

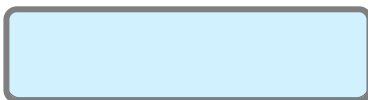
Test:

White

Date:

4/20/2018

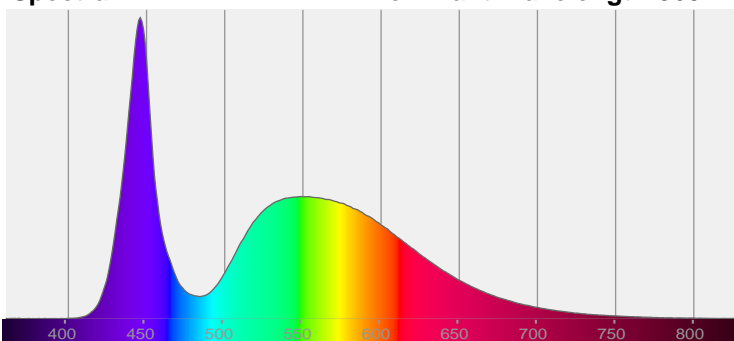
Note:



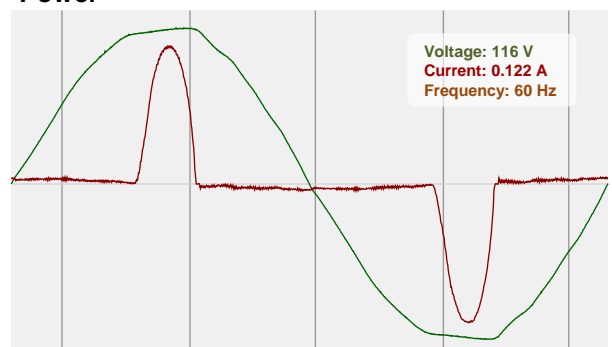
CIE 1931
x: 0.309
y: 0.317

Spectra

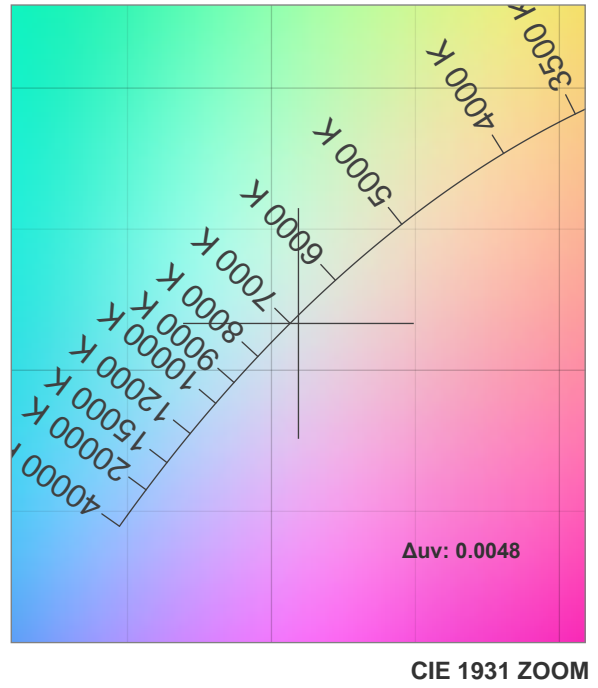
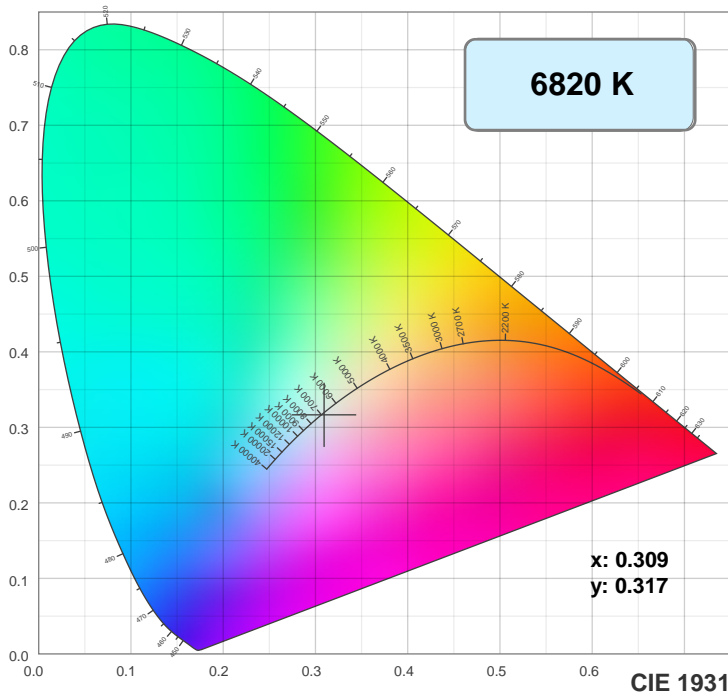
Dominant Wavelength: 360nm



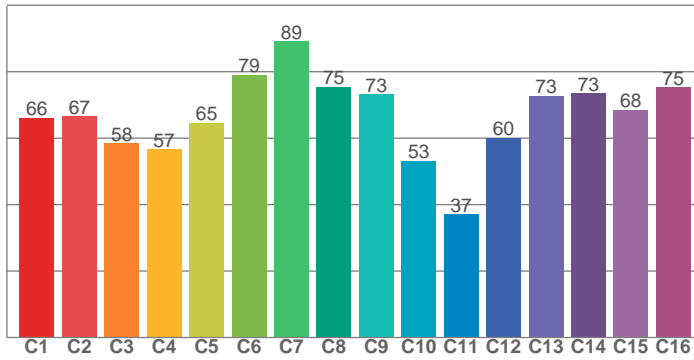
Power



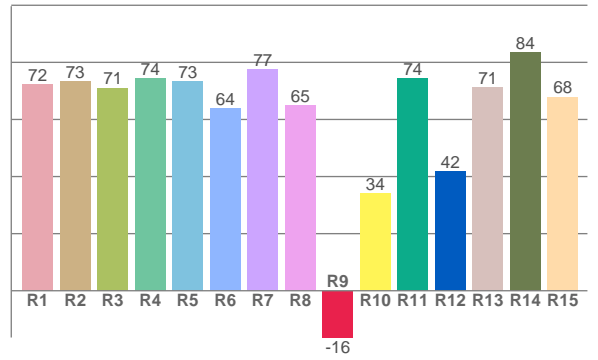
Color Details



TM30: 66.3



CRI: 71.3 (R1-R8)



CRI R values, only R1-R8 are used to calculate final CRI value

R1	R2	R3	R4	R5	R6	R7	R8	R9	R10	R11	R12	R13	R14	R15
72.4	73.2	71.1	74.3	73.3	63.9	77.5	65.0	-16.4	34.3	74.3	41.7	71.1	83.5	67.9

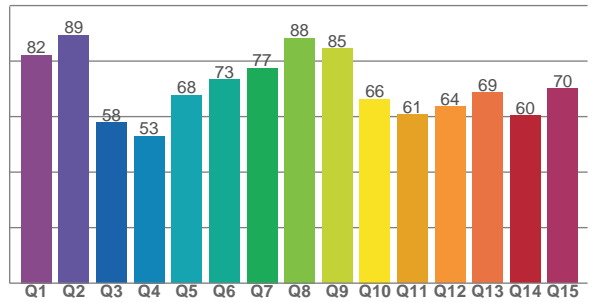
TM30 C values, 16 binned values out of total of 99 C values

C1	C2	C3	C4	C5	C6	C7	C8	C9	C10	C11	C12	C13	C14	C15	C16
66.2	66.6	58.5	56.7	64.7	79.1	89.2	75.5	73.2	53.1	37.1	60.1	72.7	73.5	68.5	75.3

CQS Q values

Q1	Q2	Q3	Q4	Q5	Q6	Q7	Q8	Q9	Q10	Q11	Q12	Q13	Q14	Q15
82.2	89.4	57.9	53.0	67.7	73.3	77.5	88.3	84.5	66.3	60.7	63.7	68.7	60.4	70.1

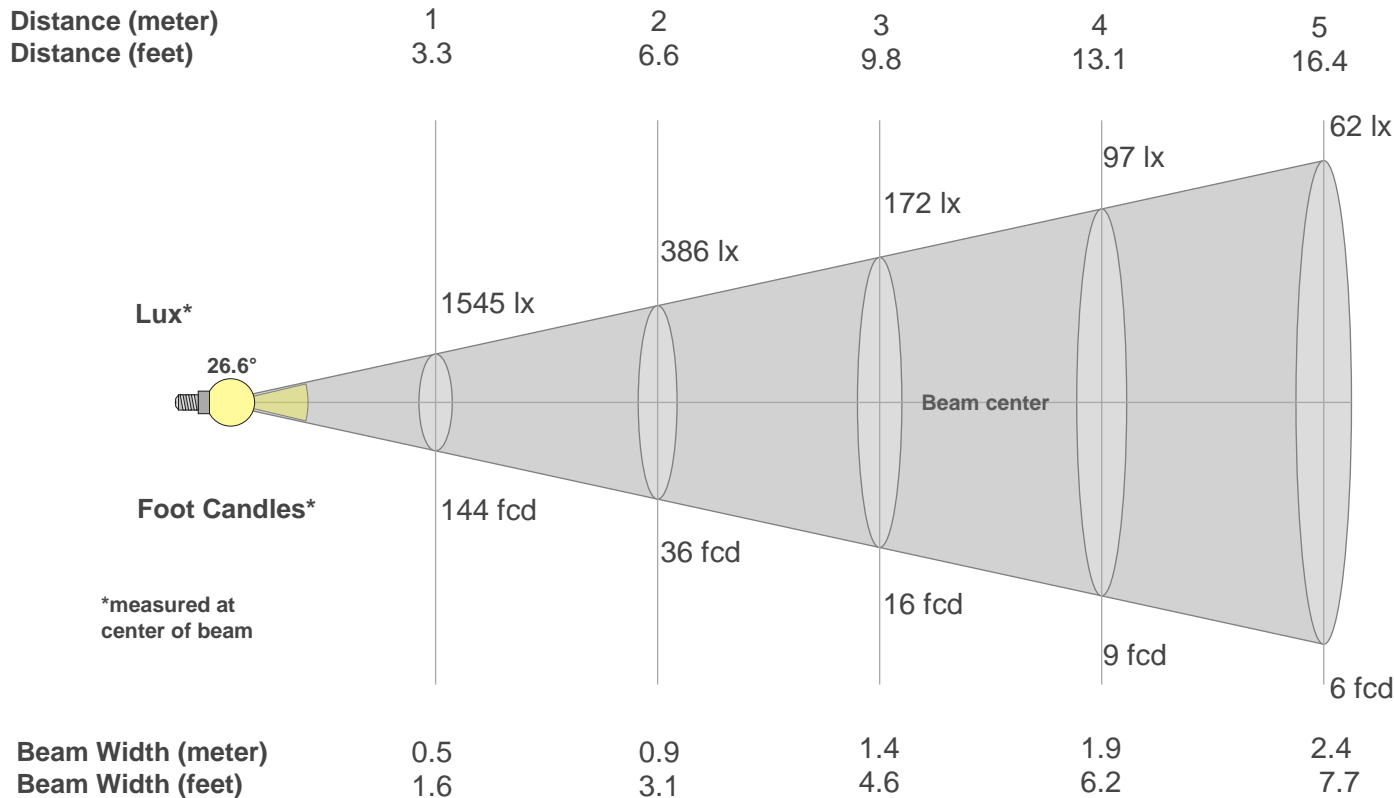
CQS: 68.9



Color Parameters

Color Temperature	Color Rendering Index	Red Component	Color Fidelity	Color Gamut	Color Quality Scale	Color Coordinate CIE 1931	Color Coordinate CIE 1931	Color Coordinate	Color Coordinate	Color Deviation from Black Body
CCT	CRI	CRI R9	TM30 Rf	TM30 Rg	CQS	x	y	u	v	Δuv
6820 K	71.3	-16.4	66.3	96.8	68.9	0.309	0.317	0.200	0.307	0.0048

Beam Details



Beam Intensities from 1-20m

m	1	2	3	4	5	6	7	8	9	10	11	12	13	14	15	16	17	18	19	20
ft	3.3	6.6	9.8	13.1	16.4	19.7	23	26.2	29.5	32.8	36.1	39.4	42.7	45.9	49.2	52.5	55.8	59.1	62.3	65.6
lx	1545	386	172	97	62	43	32	24	19	15	13	11	9	8	7	6	5	5	4	4
fcd	143.5	35.9	15.9	9	5.7	4	2.9	2.2	1.8	1.4	1.2	1	0.8	0.7	0.6	0.6	0.5	0.4	0.4	0.4

Intensities in 0° C-plane

0°	2°	4°	6°	8°	10°	12°	14°	16°	18°	20°	22°	24°	26°	28°	30°	32°	34°	36°	38°
1545	1510	1403	1301	1182	1050	892	713	554	419	305	217	148	102	70	48	33	22	16	12
100%	98%	91%	84%	77%	68%	58%	46%	36%	27%	20%	14%	10%	7%	5%	3%	2%	1%	1%	1%

Intensities in 90° C-plane

0°	2°	4°	6°	8°	10°	12°	14°	16°	18°	20°	22°	24°	26°	28°	30°	32°	34°	36°	38°
1545	1510	1403	1301	1182	1050	892	713	554	419	305	217	148	102	70	48	33	22	16	12
100%	98%	91%	84%	77%	68%	58%	46%	36%	27%	20%	14%	10%	7%	5%	3%	2%	1%	1%	1%

Intensities in 180° C-plane

0°	2°	4°	6°	8°	10°	12°	14°	16°	18°	20°	22°	24°	26°	28°	30°	32°	34°	36°	38°
1545	1498	1399	1278	1148	1013	869	723	579	451	339	246	181	134	85	48	29	19	14	11
100%	97%	91%	83%	74%	66%	56%	47%	37%	29%	22%	16%	12%	9%	6%	3%	2%	1%	1%	1%

Intensities in 270° C-plane

0°	2°	4°	6°	8°	10°	12°	14°	16°	18°	20°	22°	24°	26°	28°	30°	32°	34°	36°	38°
1545	1498	1399	1278	1148	1013	869	723	579	451	339	246	181	134	85	48	29	19	14	11
100%	97%	91%	83%	74%	66%	56%	47%	37%	29%	22%	16%	12%	9%	6%	3%	2%	1%	1%	1%

Beam Angle 50%	Field Angle 10%	Cutoff Angle 2,5%	Intensity Ratio in 120° Cone	Intensity Ratio in 90° Cone
26.6°	48.8°	61.9°	99.5%	98.6%