

AVANTE

Akro Command DSP

ELEVATING
YOUR
SOUND

USER
MANUAL



©2026 Avante Audio all rights reserved. Information, specifications, diagrams, images, and instructions herein are subject to change without notice. Avante logo and identifying product names and numbers herein are trademarks of Avante Audio. Copyright protection claimed includes all forms and matters of copyrightable materials and information now allowed by statutory or judicial law or hereinafter granted. Product names used in this document may be trademarks or registered trademarks of their respective companies and are hereby acknowledged. All non-Avante brands and product names are trademarks or registered trademarks of their respective companies.

Avante Audio and all affiliated companies hereby disclaim any and all liabilities for property, equipment, building, and electrical damages, injuries to any persons, and direct or indirect economic loss associated with the use or reliance of any information contained within this document, and/or as a result of the improper, unsafe, insufficient and negligent assembly, installation, rigging, and operation of this product.

The Bluetooth® word mark and logos are registered trademarks owned by Bluetooth SIG, Inc. and any use of such marks by Avante Audio is under license. Other trademarks and trade names are those of their respective owners.

AVANTE World Headquarters USA

6122 S. Eastern Ave. | Los Angeles, CA 90040 USA
323-316-9722 | www.avanteaudio.com | info@avanteaudio.com

AVANTE NETHERLANDS

Junostraat 2 | 6468 EW Kerkrade | Netherlands
+31 45 546 85 00 | europa@avanteaudio.com

AVANTE MEXICO

Santa Ana 30 | Parque Industrial Lerma | Lerma Mexico 52000
+52 (728) 282.7070 | ventas@avanteaudio.com

FCC STATEMENT

This device complies with Part 15 of the FCC Rules. Operation is subject to the following two conditions: (1) this device may not cause harmful interference, and (2) this device must accept any interference received, including interference that may cause undesired operation.

FCC RADIO FREQUENCY INTERFERENCE WARNINGS & INSTRUCTIONS

This product has been tested and found to comply with the limits as per Part 15 of the FCC Rules. These limits are designed to provide reasonable protection against harmful interference in a residential installation. This device uses and can radiate radio frequency energy and, if not installed and used in accordance with the included instructions, may cause harmful interference to radio communications. However, there is no guarantee that interference will not occur in a particular installation. If this device does cause harmful interference to radio or television reception, which can be determined by turning the device off and on, the user is encouraged to try to correct the interference by one or more of the following methods:

- Reorient or relocate the device.
- Increase the separation between the device and the receiver.
- Connect the device to an electrical outlet on a circuit different from which the radio receiver is connected.
- Consult the dealer or an experienced radio/TV technician for help.

Energy Saving Matters (EuP 2009/125/EC)

Saving electric energy is a key to help protecting the environment. Please turn off all electrical products when they are not in use. To avoid power consumption in idle mode, disconnect all electrical equipment from power when not in use. Thank you!

Document Version: An updated version of this document may be available online. Please check online at www.avante.com for the latest revision/update of this document before beginning installation and use.

Date	Document Version	Notes
06/08/2026	1.0	Initial release

CONTENTS

Introduction	4
Software License & Limited Warranty	5
Quick Start Guide	6
Getting Started	8
Software Interface Overview	10
Basic User Mode	12
Administrator Mode	15
Advanced System Setup	18
Firmware Updates	20
Troubleshooting	21
Specifications	23
Appendix A - Factory Presets	24
Software License Agreement	25
Glossary of Terms	26
Index	27

INTRODUCTION

Welcome to **Avante Akro Command**, the professional DSP control software for the Avante Akro series of active loudspeakers (ATS218 and ATL328).

This software is designed for professional use only. Please read and understand all the instructions and guidelines in this manual carefully and thoroughly before attempting to operate the software or the connected speakers. These instructions contain important information regarding safety, network setup, and proper use.

Important Safety & Network Information

- This software controls high-power professional loudspeakers capable of producing extremely high sound pressure levels. Always wear appropriate hearing protection when operating the system at high volumes.
- Proper network setup is critical. Use a dedicated, high-quality Router (Router with DHCP server is necessary as speakers are set to DHCP in factory settings), Ethernet switch, shielded Cat5e or better cables, and ensure your computer's firewall allows communication with the speakers.
- Always follow correct power sequencing: power on the speakers before launching the software, and perform a full system power cycle after any firmware update.
- Administrator Mode provides full access to advanced DSP parameters. Use this mode responsibly — incorrect settings can cause damage to speakers or poor system performance.
- Monitor speaker temperature via the software at all times. The speakers feature built-in thermal protection; do not ignore temperature warnings.

Software Installation

Download the latest version of Akro Command from the product page on www.avanteaudio.com. Run the installer and follow the on-screen Setup Wizard instructions.

Customer Support

AVANTE provides a customer support line to assist with software setup, answer questions, and resolve any issues that may arise during installation or operation.

AVANTE SERVICE USA – Monday – Friday 8:00am to 4:30pm PST

Voice: 800-322-6337 | support@avanteaudio.com

AVANTE SERVICE EUROPE – Monday – Friday 08:30 to 17:00 CET

Voice: +31 45 546 85 30 | support@avanteaudio.com

SOFTWARE LICENSE & LIMITED WARRANTY

License Grant

Avante Audio grants you a non-exclusive, non-transferable license to use the Akro Command software on a single computer for controlling Avante Akro series loudspeakers. This license is for professional use only.

Limited Warranty

Avante Audio warrants that the software media (if provided) will be free from defects in materials and workmanship under normal use for a period of ninety (90) days from the date of purchase. This limited warranty applies only to the physical media and does not cover the performance or functionality of the software.

Disclaimer

Except as expressly set forth above, the software is provided "AS IS" without warranty of any kind, either express or implied, including but not limited to the implied warranties of merchantability and fitness for a particular purpose. Avante Audio does not warrant that the software will meet your requirements or that its operation will be uninterrupted or error-free.

Limitation of Liability

In no event shall Avante Audio be liable for any special, incidental, indirect, or consequential damages arising out of the use or inability to use this software, even if advised of the possibility of such damages.

For the full End User License Agreement (EULA), please visit:
www.avanteaudio.com

QUICKS START GUIDE

This Quick Start Guide will help you get your Avante Akro system operational as quickly as possible. For full details on any step, refer to the corresponding sections later in this manual.

1. Network Connection

Connect your computer to a simple unmanaged Ethernet switch (TP-Link, Netgear, or equivalent). Run a dedicated Cat5e or Cat6 cable from the switch to each group of speakers (for example: one cable for Left array, one for Right array, and one for Subs). This reduces network traffic and improves reliability. The speakers are set to DHCP natively, so a DHCP server (Router) is necessary for first setup. IP addresses can be set to fixed in the network settings. The Uplink port connects to your network (or previous speaker) while the Downlink port connections to the next speaker.

2. Download & Install Akro Command

Download the correct version for your computer from the product page on www.avanteaudio.com:

- **macOS**: Avante_Audio_Akro_Command_v_4_0_0_144037.app.zip
- **Windows 64-bit**: Avante_Audio_Akro_Command_64_bit_v_4_0_0_144037.msi
- **Windows 32-bit**: Avante_Audio_Akro_Command_32_bit_v_4_0_0_144037.msi

Install the software and launch it. Your speakers should appear in the unit list once they are powered on and connected to the same network.

3. Prepare Factory Settings Files

You will need two firmware files (one for the ATL328 and one for the ATS218). These are the official Factory Settings files.

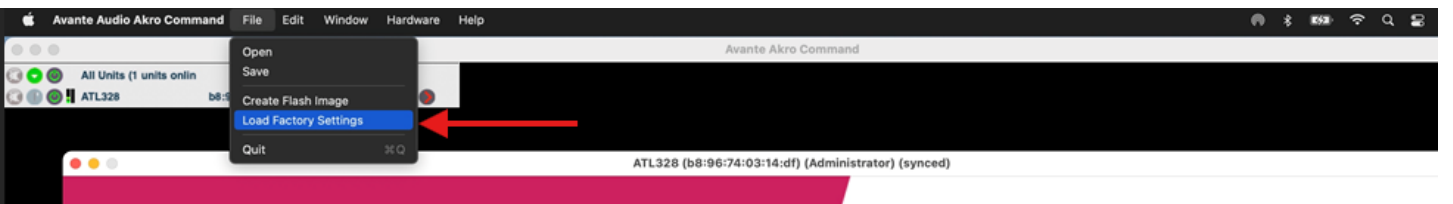
Copy both attached **.ffi** files to your desktop now — you will use them in Step 5.

4. Load Factory Settings

1. Click the green arrow next to a speaker to open its control page.
2. Go to **Hardware** → **Enter Password**.



3. Enter the password: **Ad_min** and click **OK**.
4. Once the Administrator page loads, go to **File** → **Load Factory Settings**.



5. Locate the correct Factory Settings file on your desktop (from Step 3) and click **Open / Load**.
6. Click **OK** and wait approximately **60 seconds** for the speaker to fully reset.
7. Repeat for every speaker.

Your speakers will now be in **Basic User Mode** with the correct factory configuration loaded.

QUICKS START GUIDE

Self-Test Feature

The ATL328 has a **self-test button** on the rear panel, located between the XLR input and the RJ45 (AVB) input at the top.



A quick press of this button will run a self-test. You will hear pink noise from each driver in sequence: lows → mids → highs. This is very useful for troubleshooting a cabinet.

The ATS218 subwoofer also has this self-test feature and will play pink noise through both 18” woofers simultaneously.

Basic Tuning Recommendations

ATL328 Line Array

The ATL328 comes with one factory preset: **ATL328 FIR** (includes FIR filtering).

For a basic configuration, adjust either manually on the rear of the ATL328 or in the software using the **HF Compensation** and **LF Coupling** controls:

Configuration	HF Compensation	LF Coupling
Stacked - 4 ATL328	4	F
Flown - 6 ATL328	5	E
Flown - 9 ATL328	6	D

Other settings are dependent on circumstances and deployment and should be measured with an analyzer.

These settings can also be done in Administrator Mode using the EQ, HPF, and LPF. However, if you do so, make sure that the presets are in neutral position (A – 1) both on the rear of the cabinet and in the software first before modifying the EQ.

ATS218 Subwoofer Presets

- **ATS218 80** – 80 Hz roll-off
- **ATS218 100** – 100 Hz roll-off (most common)
- **ATS218 120** – 120 Hz roll-off (maximum low-frequency output)
- **ATS218 Cardio** – For cardioid mode (load on the reversed/rear-facing speaker)
- **ATS218 Endfire F** – For endfire mode (load on the most forward-placed speaker; recommended spacing: 50 cm)

GETTING STARTED

This section will guide you through the initial setup of Avante Akro Command, from installing the software to discovering and organizing your connected speakers.

System Requirements

Before installing Akro Command, please ensure your computer meets the following minimum specifications:

- Operating System: Windows 10 / 11 (64-bit) or macOS 10.15 Catalina or later
- Processor: Intel Core i5 or equivalent (or Apple Silicon M1/M2)
- Memory: 8 GB RAM minimum (16 GB recommended)
- Storage: 500 MB free disk space
- Network: Ethernet port (recommended) or Wi-Fi with stable connection
- Display: 1280 × 800 resolution or higher

A wired Ethernet connection is strongly recommended for the most reliable performance when controlling multiple speakers.

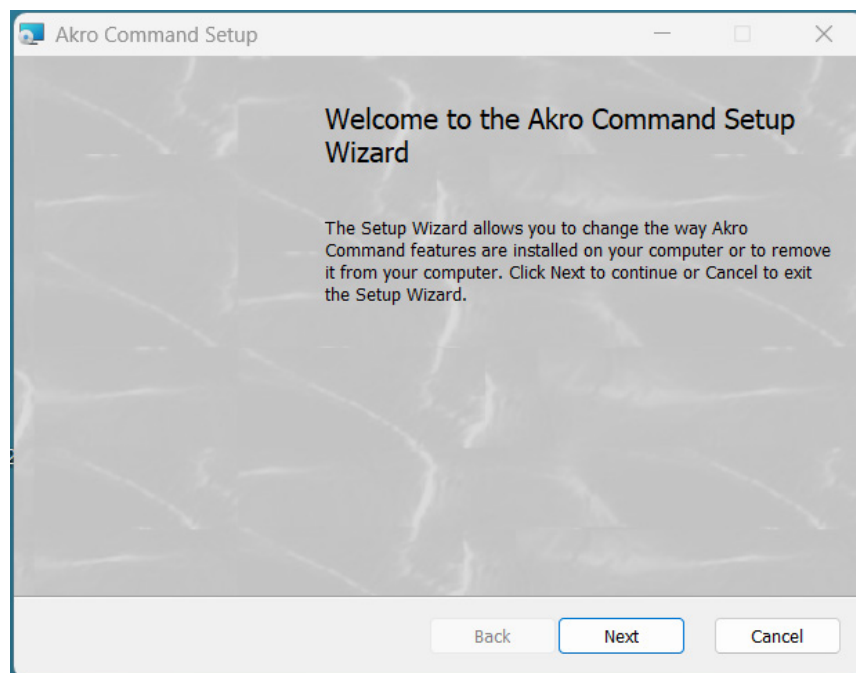
Software Download & Installation

1. Visit the product page for your Avante Akro speakers at www.avanteaudio.com.
2. Navigate to the Downloads section and download the latest version of Akro Command (available for both Windows and macOS).
3. Once the download is complete, run the installer file.
4. Follow the on-screen instructions in the Setup Wizard.
5. When the installation is finished, launch Akro Command from your desktop or applications folder.

First Launch & Setup Wizard

When you open Akro Command for the first time, the Setup Wizard will appear. This wizard helps you configure basic settings and prepare the software for use.

Follow the prompts to complete the initial setup. You can change these settings later through the Tools menu if needed.



GETTING STARTED

Network Connection & Speaker Discovery

Akro Command communicates with your speakers over a standard Ethernet network.

1. Connect your computer and all Avante Akro speakers to the same network (preferably using a dedicated Ethernet switch).
2. Power on all speakers and wait approximately 30 seconds for them to fully boot.
3. Launch Akro Command.
4. The software will automatically scan the network and display all detected speakers in the main list.



5. Each speaker will show a green status indicator when successfully connected.

If speakers do not appear, check your network cables, firewall settings, and ensure all devices are on the same subnet.

Adding and Organizing Units

Once speakers are discovered, you can manage them easily:

- Click the green arrow next to any speaker name to open its individual control surface.
- Grouping can be done via Tools → New Group.
- Drag and drop speakers in the list to reorder them for easier management.
- Right-click a speaker for additional options, including renaming or removing it from the list.

You are now ready to begin using the software in either Basic User Mode or Administrator Mode.

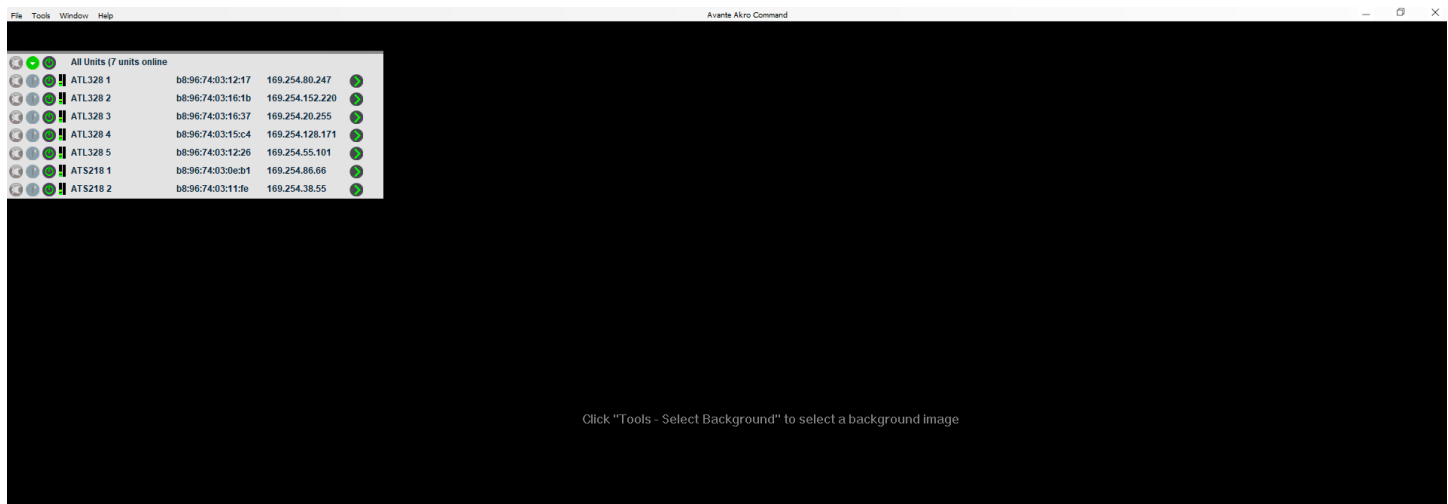
SOFTWARE INTERFACE OVERVIEW

Akro Command features a clean, modern interface designed for fast navigation and clear visual feedback. This section provides an overview of the main screen and the key differences between the two operating modes.

Main Window Layout

The main window is divided into three primary areas:

- **Top Bar** — Displays the software title, connected unit count, and access to the Tools menu (including password entry, background selection, and firmware options).
- **Speaker List** — Located on the left side, this panel shows all discovered speakers with their current status.



- **Control Surface** — The large central area that displays the active speaker's controls once opened.

Speaker List & Status Indicators

The Speaker List provides real-time status for every connected unit:

- **Green dot** — Speaker is online and responding normally.
- **Gray dot** — Speaker is offline or not responding.
- **Green arrow** — Click to open the speaker's full control surface.
- **Mute toggle** — Red is speaker muted, grey is speaker unmuted.



Wink function (second dot) — When clicked on, the front LED on the speaker will blink, as well as all LED's on the back of the speaker.

You can right-click any speaker for additional options such as renaming, removing, or viewing detailed information.

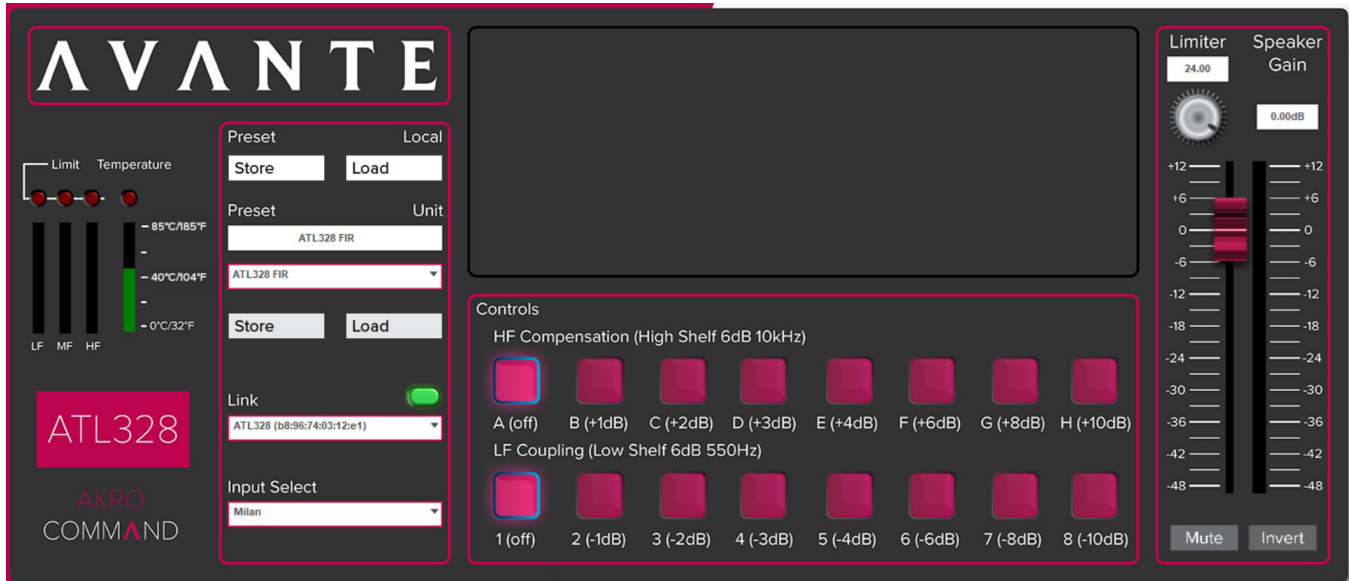
SOFTWARE INTERFACE OVERVIEW

Administrator vs Basic User Mode

Akro Command operates in two distinct modes:

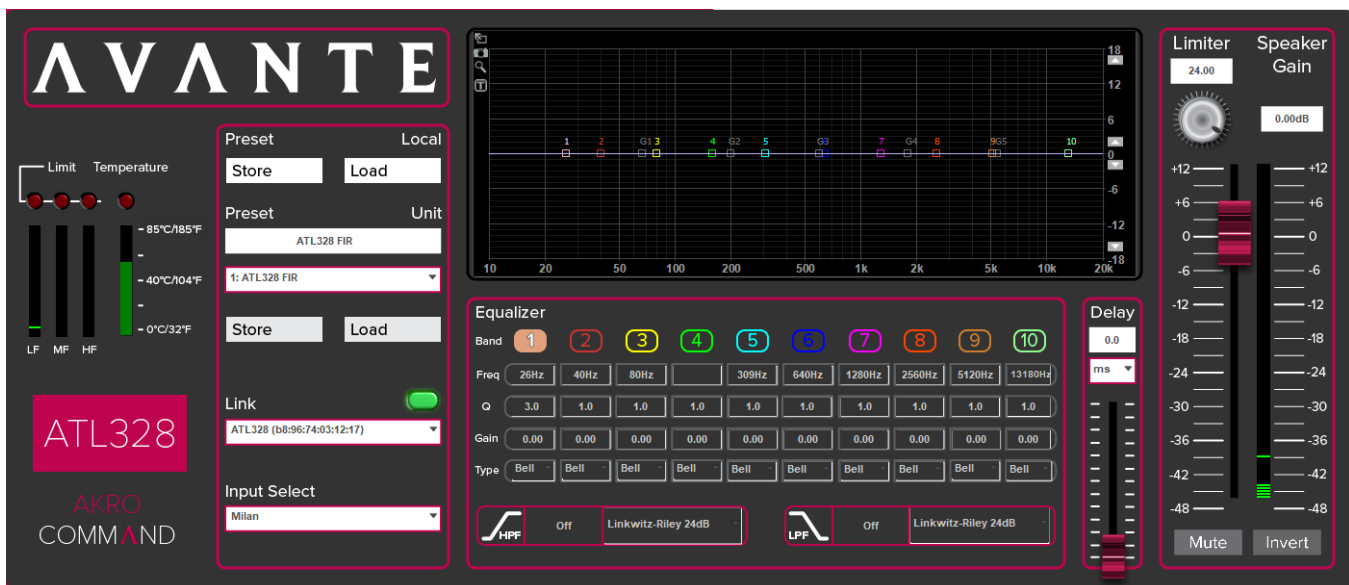
- **Basic User Mode (Default)**

This is the simplified interface that mirrors the physical rear-panel controls of the speakers. It is ideal for quick setups, DJs, and rental technicians. In this mode you can load factory presets, adjust gain, mute, and invert, but advanced DSP parameters are hidden.



- **Administrator Mode**

This mode unlocks the full DSP capabilities, including the 10-band parametric EQ, precise delay, and Graphic EQ curve. Administrator Mode is intended for system engineers and advanced users who require detailed control.



How to Switch Modes

- To enter Administrator Mode: Go to **Tools** → **Enter Password** for all units and enter **Ad_min**.
- To return to Basic User Mode: Enter the password **U_ser**.

The current mode is always visible in the control surface header.

BASIC USER MODE

Basic User Mode provides a simplified interface that closely mirrors the physical controls on the rear of the ATS218 and ATL328 speakers. It is ideal for quick setups, DJs, rental technicians, and users who prefer straightforward preset-based operation.

Accessing Basic User Mode

Basic User Mode is the default mode when you first launch Akro Command. If you are currently in Administrator Mode, you can switch back at any time by going to **Tools** → **Enter Password for all units** and entering the password **U_ser**.

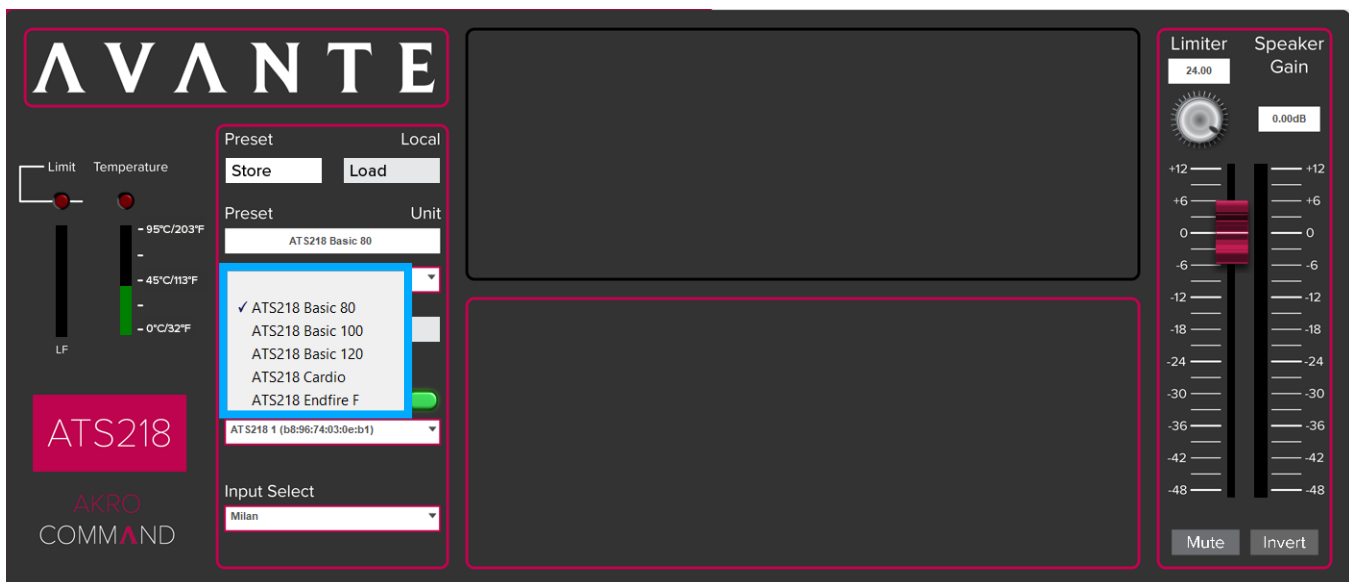
Loading Factory Presets

1. In the Speaker List, click the green arrow next to the speaker you want to control.
2. The speaker's control surface will open.
3. Click the **Preset** dropdown menu.
4. Select the desired factory preset.

Available Factory Presets

ATS218 Subwoofer

- **ATS218 80** – 80 Hz roll-off (ideal for systems with strong low-frequency extension)
- **ATS218 100** – 100 Hz roll-off (most common crossover point)
- **ATS218 120** – 120 Hz roll-off (maximum low-frequency output and punch)
- **ATS218 Cardio** – For cardioid configurations (load on the reversed/rear-facing speaker)
- **ATS218 Endfire F** – For endfire arrays (load on the most forward-placed speaker; recommended spacing: 50 cm)



BASIC USER MODE

ATL328 Line Array

- **ATL328 FIR** – The primary preset with advanced FIR filtering. This is the only factory preset loaded on the ATL328. It provides linear phase response, precise time alignment, and optimized tonal balance for both ground-stacked and flown configurations.



Recommended LF Coupling Settings (ATL328)

For optimal performance with multiple ATL328 units, use the following LF Coupling settings in Basic Mode:

Configuration	HF Compensation	LF Coupling
Stacked - 4 ATL328	4	F
Flown - 6 ATL328	5	E
Flown - 9 ATL328	6	D

These settings optimize low-frequency coupling and phase alignment for the array size and configuration.

Quick Controls

In Basic User Mode you have immediate access to the following essential controls on every speaker:

- **Speaker Gain** – Adjust overall output level
- **Limiter** – View or adjust the limiter threshold
- **Mute** – Silence the speaker instantly
- **Invert** – Reverse polarity
- **HF Compensation** (ATL328 only) – High-shelf boost from 0 dB to +10 dB at 10 kHz
- **LF Coupling** (ATL328 only) – Low-shelf adjustment from 0 dB to –10 dB at 550 Hz

These controls allow fast, on-the-fly adjustments without entering Administrator Mode.

BASIC USER MODE

This section covers configuration options also available in Advanced Mode via presets. These tools allow you to optimize your Avante Akro system for specific venues, array configurations, and acoustic environments.

Presets

Cardioid & Endfire Subwoofer Arrays (ATS218)

The ATS218 subwoofer supports directional bass configurations for improved low-frequency control and reduced stage volume.

Cardioid Mode

Use the **ATS218 Cardio** preset on the reversed (rear-facing) speaker in a 2- or 3-speaker stack. This creates a cardioid pattern that reduces low-frequency energy behind the array while maintaining strong forward output.

Endfire Mode

Use the **ATS218 Endfire F** preset on the most forward-placed speaker.

Recommended spacing between speakers: **50 cm (approximately 20 inches)**.

This configuration provides strong forward projection and significant rear rejection.

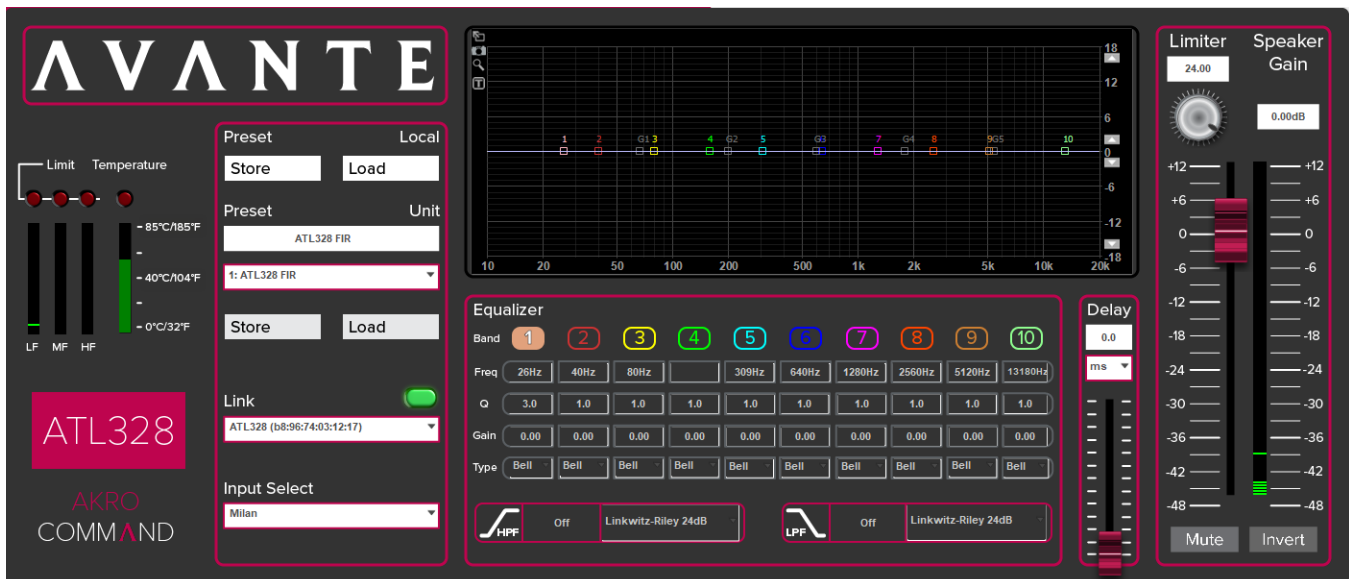
ADMINISTRATOR MODE

Administrator Mode provides full access to the advanced DSP capabilities of the ATS218 and ATL328 loudspeakers. This mode is intended for system engineers, installers, and advanced users who require precise control over equalization, filtering, delay, and system tuning.

Entering Administrator Mode

1. In the main unit list, click the **green arrow** next to the speaker you want to control.
2. From the top menu, go to **Hardware** → **Enter Password**.
3. Type **Ad_min** and click **OK**.
4. The speaker page will reload with the full Administrator interface.

To exit Administrator Mode, simply close the speaker window or select a different speaker from the main list.



Administrator Mode Interface Overview

The Administrator screen contains the following main areas:

- **Real-Time Frequency Response Display** — Large central graph that updates instantly as you make changes.
- **10-Band Parametric Equalizer** — Full control of frequency, Q, gain (± 12 dB), and filter type (Bell, Low Shelf, High Shelf) for each band.
- **Limiter & Speaker Gain** — Independent control of limiter threshold and master output gain.
- **Delay** — Up to 2000 ms of delay in 0.1 ms increments for time alignment.
- **Preset Store / Load** — Save and recall custom presets locally or directly to the speaker.

ADMINISTRATOR MODE

10-Band Parametric Equalizer

The Equalizer section offers a 10-band parametric EQ with full control over:

- **Frequency** – Adjustable from 20 Hz to 20 kHz
- **Q Factor** – Adjustable from 0.1 to 10.0 for precise bandwidth control
- **Gain** – ± 12 dB adjustment per band
- **Type** – Bell, High-Shelf, or Low-Shelf filter shapes

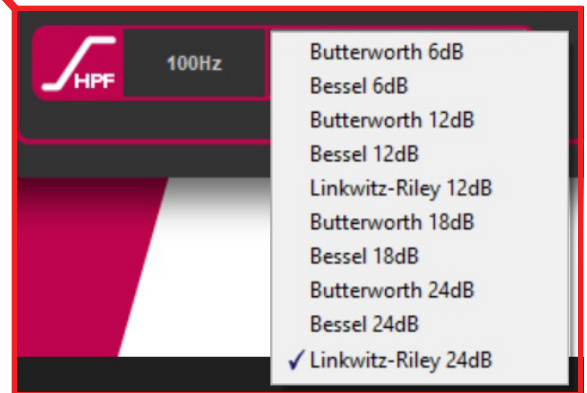
You can adjust bands individually or use the real-time frequency response display to visually shape the curve.



High-Pass & Low-Pass Filters

- **HPF (High-Pass Filter)** – Linkwitz-Riley 24 dB/octave
- **LPF (Low-Pass Filter)** – Linkwitz-Riley 24 dB/octave

These filters are essential for proper crossover alignment between the ATL328 and ATS218 or for protecting drivers in custom configurations. Both HPF and LPF have several filter options, as shown in the dropdown menu. The frequency can be set by typing the desired value in the box next to the dropdown menu and the colored HPF/LPF button shows whether a filter is active.



Best Practice: Always return both controls to neutral (A and 1) before making significant EQ changes. This prevents conflicting settings between Basic and Administrator modes.

Delay & Speaker Gain

- **Delay** – Adjustable in 0.1 ms increments (up to 2000 ms) for time alignment
- **Speaker Gain** – Fine output level control with 0.1 dB resolution
- **Limiter** – View and adjust the peak limiter threshold (default: 24.00)

Preset Management

In Administrator Mode you have enhanced options for saving and loading presets:

- **Local Presets** – Saved on your computer. Ideal for show-specific configurations, backing up settings, or transferring presets between computers.
- **Unit Presets** – Saved directly to the speaker's internal memory. Useful when you want the preset to travel with the speaker.

ADMINISTRATOR MODE

How to Save and Load Presets:

- Click **Store** under the **Local** or **Unit** column to save the current settings as a preset.
- Click **Load** under the **Local** or **Unit** column to recall a previously saved preset.

You can also load any of the factory presets at any time from the Preset dropdown menu.

Best Practice: It is strongly recommended to save important custom configurations as Local Presets on your computer in addition to storing them on the unit. This provides a backup in case of speaker service or replacement.

Real-Time Frequency Response Display

The large analyzer window in the center of the control surface shows a live frequency response curve.

This allows you to:

- See the effect of EQ, filters, and presets in real time
- Compare before/after settings
- Identify peaks and dips during system tuning

Multi-Speaker Grouping

Grouping can be done via Tools -> New Group.

Important Safety & Workflow Notes

- Always lower the master gain before making large EQ or filter changes.
- All changes in Administrator Mode are applied in real time — there is no undo button.
- It is strongly recommended to save custom settings as Local Presets before making major adjustments.
- For complex installations, combine Administrator Mode adjustments with proper acoustic measurement.

Exiting Administrator Mode

Simply close the individual speaker window or click another speaker in the main list. The speaker will retain its last configured settings.

ADVANCED SYSTEM SETUP

This section covers advanced configuration options available in Basic Mode via presets. These tools allow you to optimize your Avante Akro system for specific venues, array configurations, and acoustic environments.

Cardioid & Endfire Subwoofer Arrays (ATS218)

The ATS218 subwoofer supports directional bass configurations for improved low-frequency control and reduced stage volume.

Cardioid Mode

Use the **ATS218 Cardio** preset on the reversed (rear-facing) speaker in a 2- or 3-speaker stack. This creates a cardioid pattern that reduces low-frequency energy behind the array while maintaining strong forward output.

Endfire Mode

Use the **ATS218 Endfire F** preset on the most forward-placed speaker.

Recommended spacing between speakers: **50 cm (approximately 20 inches)**.

This configuration provides strong forward projection and significant rear rejection.

Multi-Speaker Grouping

Grouping can be done via Tools -> New Group.

This feature is especially useful when tuning arrays or making global adjustments during a show.

FIR Filter Overview (ATL328)

The ATL328 features advanced FIR (Finite Impulse Response) filtering built into its DSP. This provides:

- Linear phase response across the frequency range
- Precise time alignment between drivers
- Improved clarity and transient response
- Reduced lobing and better off-axis performance

The factory preset **ATL328 FIR** is optimized for most applications. In Administrator Mode, you can further refine the response using the 10-band parametric EQ and crossover filters while preserving the benefits of the FIR processing.

Flown vs Stacked System Recommendations

For optimal low-frequency performance with multiple ATL328 units, use the following HF Compensation and LF Coupling settings in Basic Mode:

Configuration	HF Compensation	LF Coupling
Stacked - 4 ATL328	4	F
Flown - 6 ATL328	5	E
Flown - 9 ATL328	6	D

These settings compensate for coupling effects and maintain consistent tonal balance.

ADVANCED SYSTEM SETUP

Advanced EQ and Filtering in Administrator Mode

In Administrator Mode you have full control over:

- **10-Band Parametric Equalizer** – Precise frequency, Q, and gain adjustments
- **High-Pass Filter (HPF)** – Linkwitz-Riley 24 dB/octave
- **Low-Pass Filter (LPF)** – Linkwitz-Riley 24 dB/octave
- **Delay** – Up to 340 ms in 0.1 ms increments for time alignment
- **Real-time Frequency Response Display** – Visual feedback of all changes

Best Practice Tip

When using custom EQ or filters, first set the HF Compensation and LF Coupling controls to neutral (A and 1) in Basic Mode before making adjustments in Administrator Mode. This prevents conflicting settings. Custom HPF and LPF only. EQ can be done simultaneously.

Important Notes

- Always lower the master gain before making significant EQ or filter changes.
- Changes made in Administrator Mode are applied in real time.
- Save custom configurations as Local Presets for quick recall at future events.
- For complex installations, consider using measurement software (such as SMAART or REW) in conjunction with the real-time analyzer.

FIRMWARE UPDATES

FIRMWARE UPDATES

Avante periodically releases firmware updates for the ATS218 and ATL328 to add new features, improve performance, fix issues, and ensure compatibility with the latest version of Akro Command software.

Important Notes Before Updating

- Firmware updates must be performed **one speaker at a time**.
- You must be connected to the same network as the speakers.
- Have the correct **.ffi** firmware file ready for each model (one for ATL328, one for ATS218).
- After updating all speakers, you must power cycle the entire system.
- Do not interrupt the update process once it has started.

Step-by-Step Firmware Update Procedure

1. Launch Akro Command and ensure all speakers appear in the main unit list.
2. Click the **green arrow** next to the first speaker you want to update.
This opens the individual speaker control page.
3. From the top menu, go to **File → Load factory settings**.
(If the option is grayed out, enter Administrator Mode first by going to **Hardware → Enter Password** and entering **Ad_min**.)
4. Click **OK** when prompted, then click OK again to confirm.
The update process will begin and may take 1–2 minutes.
5. When the update completes, click OK and wait approximately **60 seconds** for the speaker to fully reset and reconnect.
6. Repeat steps 2–5 for **every speaker** in your system.
7. Once all speakers have been updated, power down the entire system (speakers and network switch), wait 30 seconds, and power everything back on.

Best Practices

- Always update firmware when a new version is released, especially before important shows or installations.
- Keep a copy of the previous firmware version in case you need to roll back.
- Perform firmware updates in a controlled environment before deploying the system on-site.
- If a speaker fails to update or reconnect after the update, power cycle that individual unit and try again. If the problem persists, contact Avante Technical Support.

Firmware File Naming Convention

Firmware files follow this format:

Avante [Model] V[Version] [Date].ffi

Examples:

Avante ATL328 V1.4 20260506113.ffi

Avante ATS218 V1.6 202605061030.ffi

TROUBLESHOOTING

This section covers the most common issues users may encounter when using Akro Command and provides step-by-step solutions. Most problems are related to network connectivity, firmware, or mode access.

Speakers Not Appearing in the Unit List

- Verify that your computer is connected to the same network as the speakers (same unmanaged switch or router).
- Confirm all Ethernet cables are securely connected and undamaged.
- Restart the Akro Command software.
- Power cycle the speakers and network switch (power off, wait 30 seconds, power on).
- Ensure the speakers are powered on and the network LEDs are lit.
- If using a managed switch, temporarily replace it with an unmanaged switch for testing.

Cannot Enter Administrator Mode (Password Rejected)

- Make sure you are typing the password exactly as **Ad_min** (case-sensitive).
- Click the speaker's green arrow first to open the individual control page before attempting to enter the password.
- If the password field does not appear, close and reopen the speaker page, then try again.
- After entering the password, wait 5–10 seconds for the Administrator interface to fully load.

Firmware Update Fails or Gets Stuck

- Perform firmware updates **one speaker at a time**.
- Ensure a stable network connection throughout the update.
- Do not close the software or power off the speaker during the update.
- If the update fails, power cycle the affected speaker and try again.
- If the problem persists, contact Avante Technical Support.

Preset Not Loading or Applying Incorrectly

- Confirm you are loading the correct **.df** or **.ffi** file for the speaker model (ATL328 or ATS218).
- After loading a Factory Settings file, wait the full 60 seconds for the speaker to reset.
- Power cycle the speaker after loading a preset if changes do not appear immediately.

No Sound or Very Low Output

- Check that the speaker is not muted in the software.
- Verify the Input Select is set correctly (usually "Milan" or the appropriate digital input).
- Confirm the rear-panel Attenuation knob is not turned fully down.
- Run the Self-Test (quick press of the button between XLR and RJ45 inputs) to verify the drivers are functioning.
- Check the limiter meter — if it is constantly in the red, lower the input signal level.

TROUBLESHOOTING

Software Freezes, Lags, or Crashes

- Close and reopen Akro Command.
- Restart your computer.
- Ensure your computer meets the minimum system requirements.
- Reduce the number of speakers being controlled simultaneously if performance is poor.
- Reinstall the latest version of Akro Command.

Self-Test Button Not Responding

- The self-test button is located on the rear panel between the XLR input and RJ45 (Milan) input.
- Press and release quickly — do not hold the button.
- The ATL328 will play pink noise through low, mid, then high drivers in sequence.
- The ATS218 will play pink noise through both 18” woofers simultaneously.
- If no sound is produced, check power and signal connections, then contact support.

General Connection & Network Issues

- Use only high-quality Cat5e or Cat6 cables.
- Avoid running Ethernet cables alongside power cables for long distances.
- For large systems, use a dedicated unmanaged switch with sufficient ports.
- If using Wi-Fi, connect the computer via Ethernet instead for stability.
- Check your computer’s firewall and antivirus settings — temporarily disable them for testing if needed.

When to Contact Avante Technical Support

If the issue persists after following the steps above, please contact Avante Technical Support with the following information ready:

- Exact model(s) and firmware version(s) of the affected speaker(s)
- Akro Command software version
- Operating system of your computer
- Description of the problem and steps already taken
- Any error messages displayed

AVANTE SERVICE USA

Monday – Friday 8:00am to 4:30pm PST

Voice: 800-322-6337

support@avanteaudio.com

AVANTE SERVICE EUROPE

Monday – Friday 08:30 to 17:00 CET

Voice: +31 45 546 85 30

europe@avanteaudio.com

SPECIFICATIONS

Akro Command Software

Version

Current Version: 4.0.0 (Build 144037)

Supported Operating Systems

- **macOS:** macOS 12 (Monterey) and later (Intel and Apple Silicon)
- **Windows:** Windows 10 (64-bit) and Windows 11 (64-bit)
- Windows 7 / 8 / 8.1 are not supported

Minimum System Requirements

- **Processor:** Intel Core i5 (or equivalent) or better
- **RAM:** 8 GB minimum (16 GB recommended)
- **Storage:** 500 MB free disk space
- **Network:** Gigabit Ethernet port (Wi-Fi is not recommended for stable operation)
- **Display:** 1280 × 800 resolution or higher
- **Other:** Unmanaged Ethernet switch recommended for multi-unit systems

Supported Speakers

- Avante Akro ATS218 Dual 18" Powered Subwoofer
- Avante Akro ATL328 3-Way Active Line Array Element

Maximum Supported Units

- Up to 32 speakers per network (recommended maximum for optimal performance)

Network & Protocol Support

- Ethernet (10/100 Mbps)
- Milan / AVB digital audio networking
- Automatic device discovery
- Real-time bidirectional control

Control Features

- Basic User Mode with rear-panel preset mirroring
- Full Administrator Mode with 10-band parametric EQ, HPF/LPF, Delay, Limiter, and real-time analyzer
- HF Compensation and LF Coupling controls
- Multi-unit grouping
- Preset Store / Load (Local and Unit)
- Firmware update capability
- Self-test activation

File Formats

- Firmware update files: **.ffi**
- Factory and custom preset files: **.df**

Security

- Administrator password: **Ad_min** (case-sensitive)
- User password: **U_ser** (for limited access)

Performance

- Real-time parameter updates with live frequency response display
- Low-latency control over Ethernet
- Supports simultaneous control of multiple grouped speakers

Important Notes

- Akro Command requires a stable wired Ethernet connection for reliable operation.
- For best performance, use a dedicated unmanaged Gigabit switch when controlling multiple speakers.
- Always keep the software and speaker firmware up to date for the latest features and bug fixes.

APPENDIX A - FACTORY PRESETS

The Avante Akro Command software includes a set of optimized factory presets for the ATS218 subwoofer and ATL328 line array. These presets are designed to provide excellent performance for the most common deployment scenarios.

ATL328 Line Array – Factory Preset

Preset Name	Description
ATL328 FIR	Default factory preset with advanced FIR filtering. Provides linear phase response, precise time alignment, and optimized tonal balance for both ground-stacked and flown configurations. This is the only preset loaded on the ATL328.

ATS218 Subwoofer – Factory Presets

Preset Name	Description
ATS218 80	80 Hz roll-off. Ideal for use with full-range systems that already have strong low-frequency extension.
ATS218 100	100 Hz roll-off. Standard crossover point for most line array + subwoofer combinations.
ATS218 120	120 Hz roll-off. Provides maximum low-frequency output and punch for high-energy applications.
ATS218 Cardio	Cardioid preset. Load this preset on the rear-facing (reversed) subwoofer in a 2- or 3-unit cardioid array to reduce low-frequency energy behind the stack.
ATS218 Endfire F	Endfire preset. Load this preset on the most forward-placed subwoofer in an endfire configuration. Recommended spacing between units: 50 cm (20 inches).

Important Notes

- All factory presets are permanently stored in the speaker and cannot be overwritten.
- In **Basic User Mode**, you can load any of the above presets directly from the Preset dropdown.
- In **Administrator Mode**, you can further customize any preset using the 10-band parametric EQ, HPF/LPF, and Delay, then save your changes as a new Local Preset or Unit Preset.

Preset Loading Recommendation

For best results, always load the appropriate factory preset before making manual adjustments. This ensures the speaker starts from a known, optimized baseline.

SOFTWARE LICENSE AGREEMENT

IMPORTANT – READ CAREFULLY BEFORE USING THIS SOFTWARE

This End User License Agreement (“Agreement”) is a legal agreement between you (either an individual or a single entity) and Avante Audio (“Avante”) for the Akro Command software, including any associated media, printed materials, and online or electronic documentation (collectively, the “Software”).

By installing, copying, or otherwise using the Software, you agree to be bound by the terms of this Agreement. If you do not agree to the terms of this Agreement, do not install or use the Software.

1. Grant of License

Avante grants you a non-exclusive, non-transferable license to use the Software solely for your internal business or personal purposes in connection with Avante Akro series loudspeakers. You may install and use the Software on multiple computers provided that only one instance is in active use at any given time per licensed user.

2. Restrictions

You may not:

- Reverse engineer, decompile, disassemble, or create derivative works based on the Software.
- Rent, lease, lend, sell, sublicense, or otherwise transfer the Software to any third party.
- Remove or alter any proprietary notices or labels on the Software.
- Use the Software for any unlawful purpose or in any manner that violates applicable laws.

3. Ownership

The Software is licensed, not sold. Avante retains all right, title, and interest in and to the Software, including all intellectual property rights. This Agreement does not grant you any rights to trademarks or service marks of Avante.

4. Warranty Disclaimer

The Software is provided “AS IS” without warranty of any kind, either express or implied, including but not limited to the implied warranties of merchantability, fitness for a particular purpose, and non-infringement. Avante does not warrant that the Software will meet your requirements or that the operation of the Software will be uninterrupted or error-free.

5. Limitation of Liability

In no event shall Avante be liable for any special, incidental, indirect, or consequential damages arising out of or in connection with the use or inability to use the Software, even if Avante has been advised of the possibility of such damages. Avante’s total liability under this Agreement shall not exceed the amount you paid for the Software (if any).

6. Termination

This license is effective until terminated. You may terminate it at any time by destroying all copies of the Software. Avante may terminate this Agreement immediately if you fail to comply with any term or condition. Upon termination, you must destroy all copies of the Software.

7. Governing Law

This Agreement shall be governed by and construed in accordance with the laws of the State of California, without regard to its conflict of law principles. Any legal action arising under this Agreement shall be brought exclusively in the state or federal courts located in Los Angeles County, California.

8. Entire Agreement

This Agreement constitutes the entire agreement between you and Avante concerning the Software and supersedes all prior or contemporaneous representations, warranties, and agreements.

Contact Information

For questions regarding this Agreement or the Software, please contact:

AVANTE SERVICE USA

Monday – Friday 8:00am to 4:30pm PST

Voice: 800-322-6337

support@avanteaudio.com

AVANTE SERVICE EUROPE

Monday – Friday 08:30 to 17:00 CET

Voice: +31 45 546 85 30

europe@avanteaudio.com

GLOSSARY OF TERMS

Administrator Mode — The advanced operating mode in Akro Command that provides full access to the 10-band parametric EQ, HPF/LPF filters, Delay, and Limiter.

Basic User Mode — The simplified operating mode that mirrors the rear-panel controls of the speaker, allowing quick preset selection and basic adjustments via HF Compensation and LF Coupling.

Cardioid Array — A directional subwoofer configuration (typically 2 or 3 ATS218 units) that reduces low-frequency energy behind the array while maintaining forward output. Uses the **ATS218 Cardio** preset on the rear-facing unit.

DSP — Digital Signal Processor — the built-in processing engine in the ATS218 and ATL328 that handles all equalization, filtering, delay, limiting, preset management, and real-time audio processing.

Delay — A time-alignment tool in Administrator Mode that allows up to 2000 ms of delay in 0.1 ms increments to align multiple speakers or arrays.

Endfire Array — A directional subwoofer configuration that provides strong forward projection and rear rejection. Uses the **ATS218 Endfire F** preset on the front speaker with 50 cm spacing between units.

FIR Filtering — Finite Impulse Response filtering — an advanced DSP process used in the ATL328 that provides linear phase response, precise time alignment, and improved clarity.

Grouping — A feature that allows multiple speakers to be grouped so that changes made to one unit are applied simultaneously to all grouped speakers. Grouping is created via **Tools** → **New Group**.

HF Compensation — A high-shelf filter (6 dB @ 10 kHz) used to adjust high-frequency response. Controlled via buttons A (off) through H (+10 dB) in both Basic and Administrator Mode.

LF Coupling — A low-shelf filter (6 dB @ 550 Hz) used to compensate for low-frequency buildup when multiple speakers are arrayed. Controlled via buttons 1 (off) through 8 (+8 dB).

Limiter — A protective DSP function that prevents the speaker from exceeding safe output levels. Adjustable in Administrator Mode.

Milan / AVB — Milan is an Avnu Alliance-certified profile of IEEE AVB/TSN that ensures deterministic, low-latency, synchronized audio streaming and interoperability between certified professional audio devices.

Parametric Equalizer — A 10-band EQ in Administrator Mode that allows precise control of frequency, bandwidth (Q), gain, and filter type for each band.

Preset — A saved configuration of DSP settings. Includes factory presets and user-created custom presets that can be stored locally or directly to the speaker.

Self-Test — A diagnostic feature activated by pressing the button on the rear panel (between XLR and RJ45 inputs). The ATL328 plays pink noise through low, mid, and high drivers in sequence; the ATS218 plays pink noise through both woofers.

INDEX

Administrator Mode — 15

Entering, 15

Exiting, 17

HF Compensation & LF Coupling, 16

High-Pass & Low-Pass Filters, 16

Interface Overview, 15

10-Band Parametric Equalizer, 16

Preset Management (Local & Unit Presets), 17

Real-Time Frequency Response Display, 17

Advanced EQ and Filtering — 19

Advanced System Setup — 18

Cardioid Mode (ATS218), 18

Endfire Mode (ATS218), 18

FIR Filter Overview (ATL328), 18

Flown vs Stacked System Recommendations, 18

Multi-Speaker Grouping, 18

Appendix A – Factory Presets — 24

ATS218 Subwoofer — 7, 12, 24

Cardioid Configuration, 7, 18, 24

Endfire Configuration, 7, 18, 24

Factory Presets, 7, 12, 24

ATL328 Line Array — 7, 12, 24

Factory Preset (ATL328 FIR), 7, 12, 24

Recommended HF Compensation & LF Coupling Settings, 7, 13, 18

Basic Tuning Recommendations — 7

Basic User Mode — 12

Accessing, 12

Loading Factory Presets, 12

Preset Management, 14

Quick Controls, 13

Cardioid Array — 7, 18, 24

Customer Support — 4

AVANTE SERVICE EUROPE, 4, 22

AVANTE SERVICE USA, 4, 22

Delay — 16, 17, 19

DSP (Digital Signal Processor) — 26

Endfire Array — 7, 18, 24

FIR Filtering — 18, 24

Firmware Updates — 6, 20

Factory Settings Files (.ffi), 6, 20

Power Cycle After Update, 20

Step-by-Step Procedure, 6, 20

Getting Started — 8

Adding and Organizing Units, 9

First Launch & Setup Wizard, 8

Network Connection & Speaker Discovery, 9

Software Download & Installation, 8

System Requirements, 8

Glossary of Terms — 26

HF Compensation — 7, 13, 16, 18, 19

Index — 27

Introduction — 4

Customer Support, 4

Important Safety & Network Information, 4

Software Installation, 4

LF Coupling — 7, 13, 16, 18, 19

Limiter — 13, 16

Main Window Layout — 10

Control Surface, 10

Speaker List, 10

Top Bar, 10

Milan / AVB — 26

Multi-Speaker Grouping — 9, 17, 18

Network Connection — 6, 9

Parametric Equalizer — 16, 19

Preset Management — 14, 17

Administrator Mode (Local & Unit Presets), 17

Basic User Mode, 14

Quick Controls — 13

Quick Start Guide — 6

Basic Tuning Recommendations, 7

Load Factory Settings, 6

Network Connection, 6

Prepare Factory Settings Files, 6

Self-Test Feature, 7

Real-Time Frequency Response Display — 17, 19

Self-Test Feature — 7, 22

Software Interface Overview — 10

Administrator vs Basic User Mode, 11

How to Switch Modes, 11

Main Window Layout, 10

Software License Agreement — 25

Software License & Limited Warranty — 5

Specifications — 23

Control Features, 23

File Formats, 23

Minimum System Requirements, 23

Network & Protocol Support, 23

Performance, 23

Security (Passwords), 23

Supported Operating Systems, 23

Supported Speakers, 23

Version, 23

Status Indicators — 10

Gray Dot, 10

Green Arrow, 10

Green Dot, 10

Troubleshooting — 21

Cannot Enter Administrator Mode, 21

Firmware Update Fails, 21

General Connection & Network Issues, 22

Multi-Speaker Grouping Not Working, 22

No Sound or Very Low Output, 21

Preset Not Loading, 21

Self-Test Button Not Responding, 22

Software Freezes, Lags, or Crashes, 22

Speakers Not Appearing in the Unit List, 21

When to Contact Avante Technical Support, 22

