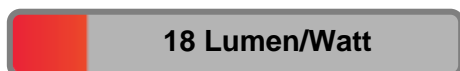


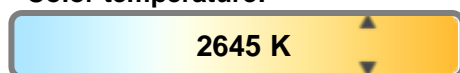
#### Light efficiency:



#### Light quality:



#### Color temperature:

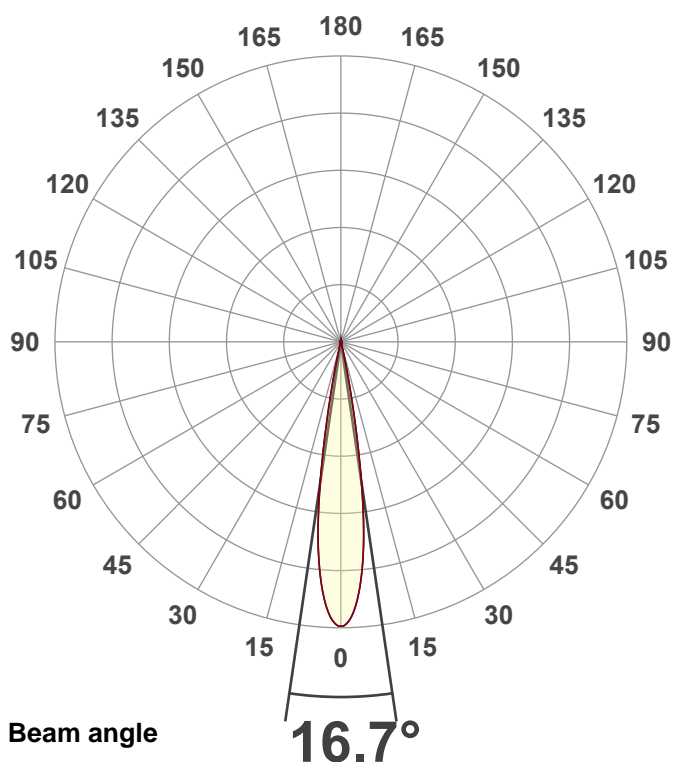


**Output:** 14994 lm  
**Peak:** 125077 cd  
**Power:** 840 W  
**PF:** 1.0



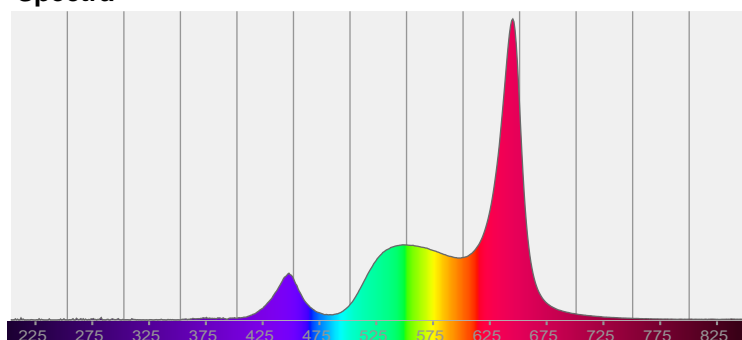
**Product name:**  
**Hydro Flex L19 (Zoom 50% 2700K)**  
**Item number:**

**Date and time:**  
**9/6/2025 12:14:41 PM**

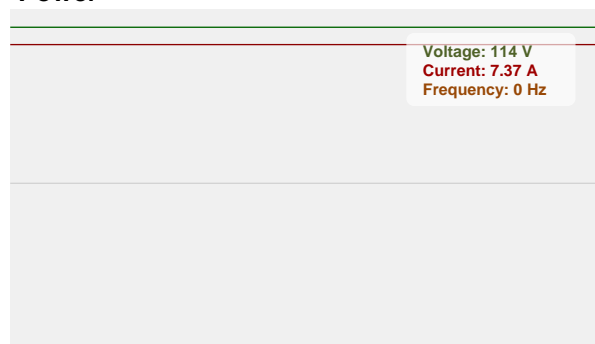


CIE 1931  
x: 0.461  
y: 0.405

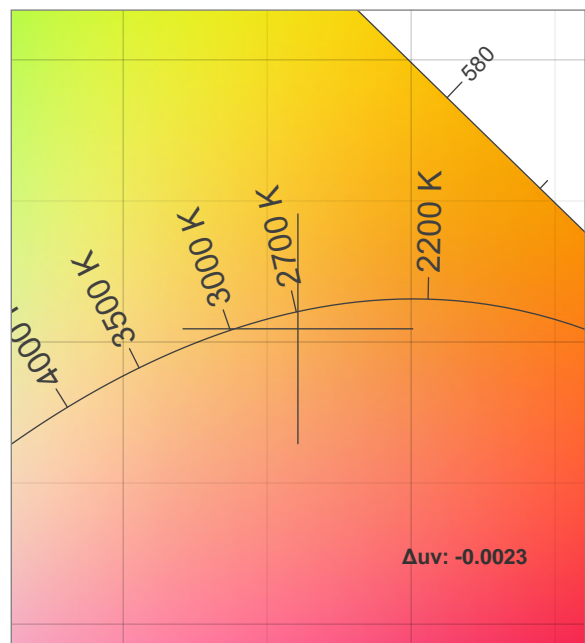
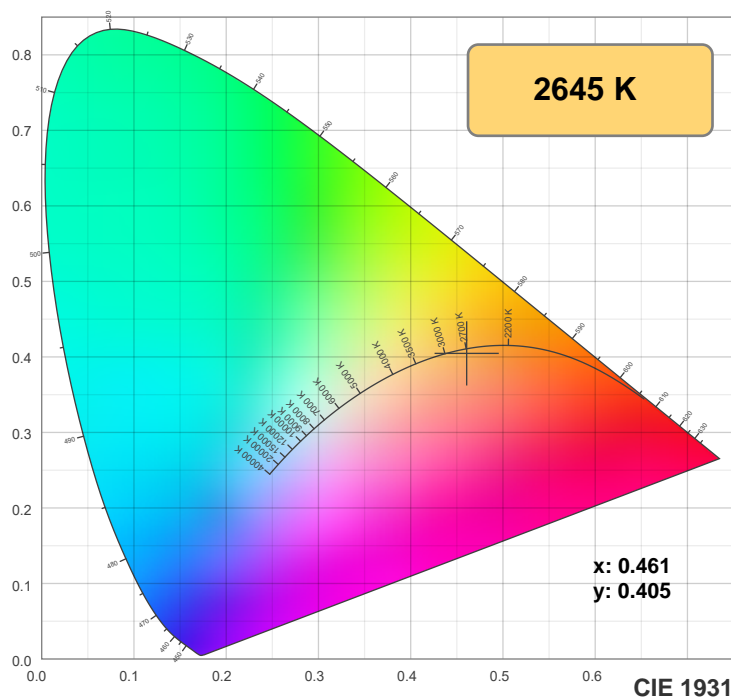
#### Spectra



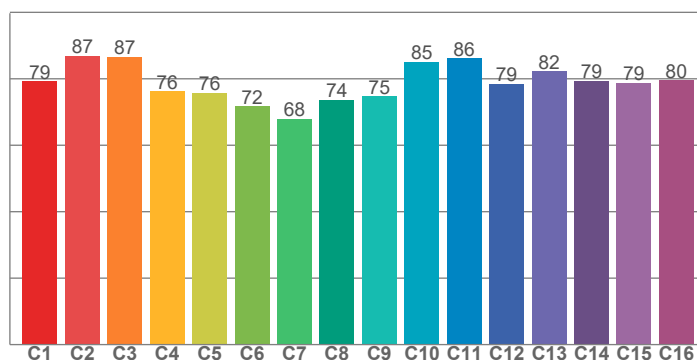
#### Power



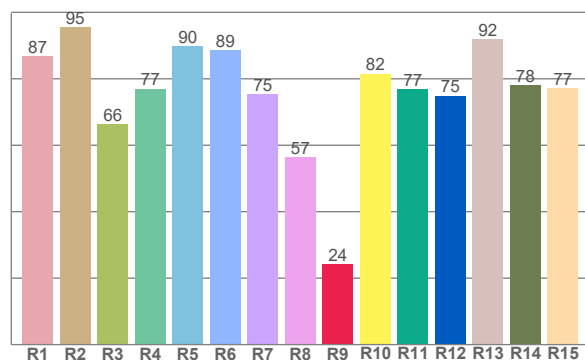
## Color details



**TM-30: 79.4**



**CRI: 79.5 (R1-R8)**



CRI R values, only R1-R8 are used to calculate final CRI value

R1	R2	R3	R4	R5	R6	R7	R8	R9	R10	R11	R12	R13	R14	R15
86.8	95.5	66.2	77.0	89.9	88.7	75.4	56.5	24.2	81.5	77.0	74.9	91.9	78.1	77.2

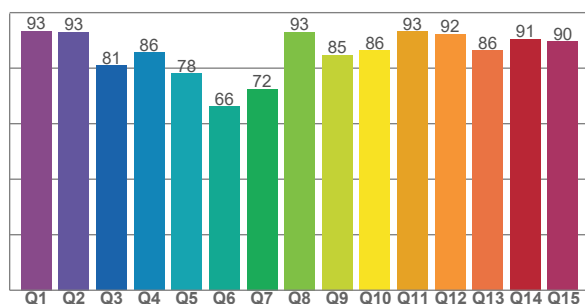
TM30 C values, 16 binned values out of total of 99 C values

C1	C2	C3	C4	C5	C6	C7	C8	C9	C10	C11	C12	C13	C14	C15	C16
79.3	86.9	86.7	76.3	75.7	71.8	67.9	73.7	74.7	85.1	86.2	78.5	82.3	79.4	78.9	79.6

CQS Q values

Q1	Q2	Q3	Q4	Q5	Q6	Q7	Q8	Q9	Q10	Q11	Q12	Q13	Q14	Q15
93.3	93.0	81.0	85.6	78.2	66.2	72.4	93.0	84.8	86.3	93.2	92.4	86.3	90.5	89.5

**CQS: 83.3**



### Color parameters

Color temperature	Color rendering index	Red component	Color fidelity	Color gamut	Color quality scale	Color coordinate cie 1931	Color coordinate cie 1931	Color coordinate	Color coordinate	Color deviation from black body
CCT	CRI	CRI R9	TM30 Rf	TM30 Rg	CQS	x	y	u	v	$\Delta uv$
2645 K	79.5	24.2	79.4	116.0	83.3	0.461	0.405	0.266	0.350	-0.0023

# TM-30 details

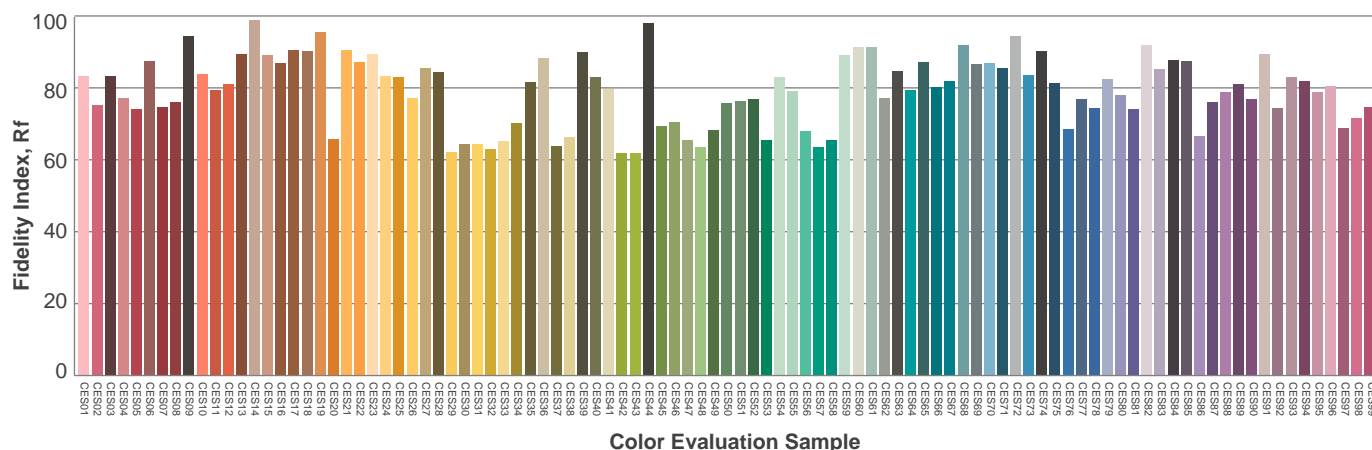
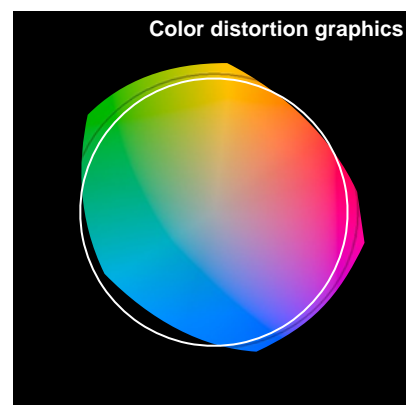
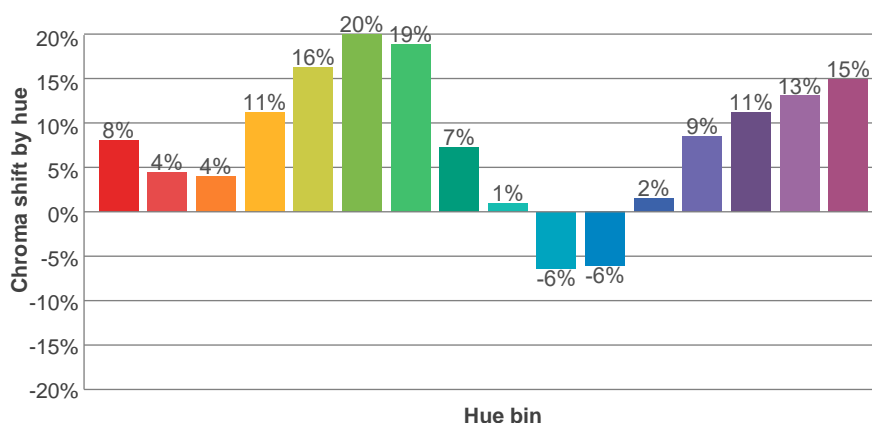
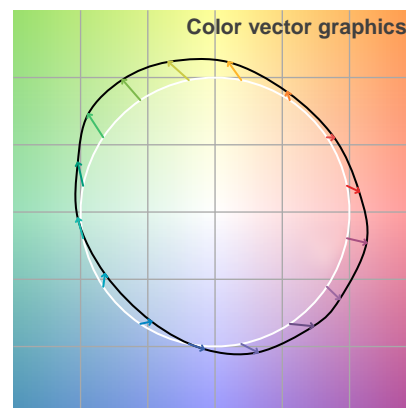
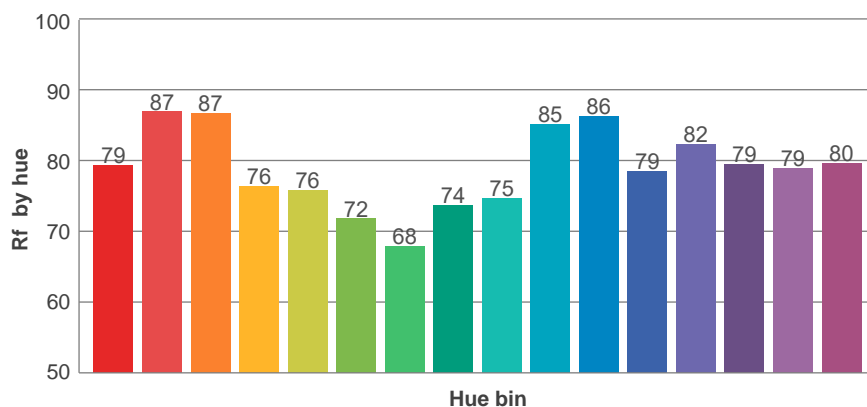
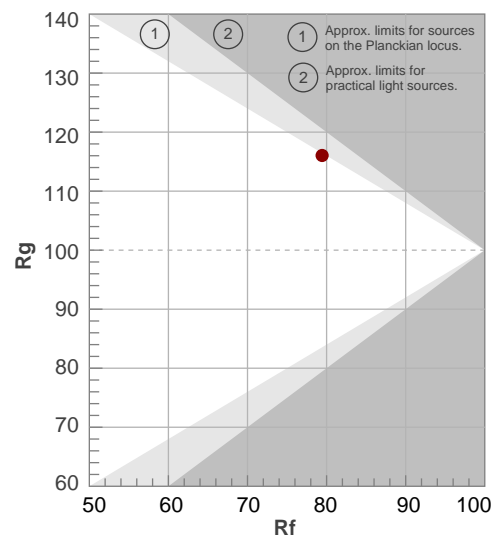
**Rf 79.4**

Fidelity index Rf

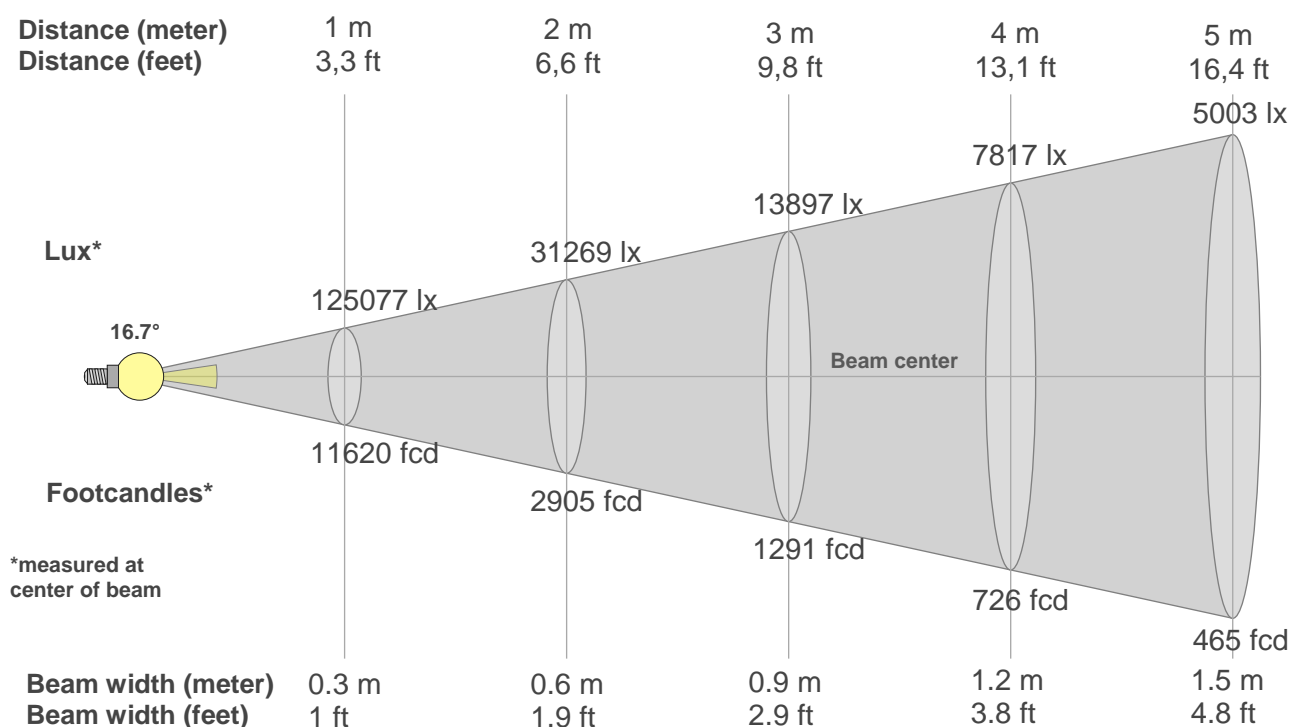
**Rg 116.0**

Gamut index Rg

Hue Bin	Ri	Shifts (%)	
		Chroma	Hue
1	79	8%	-6%
2	87	4%	-3%
3	87	4%	5%
4	76	11%	12%
5	76	16%	12%
6	72	20%	3%
7	68	19%	-8%
8	74	7%	-16%
9	75	1%	-15%
10	85	-6%	-7%
11	86	-6%	6%
12	79	2%	12%
13	82	9%	11%
14	79	11%	14%
15	79	13%	-2%
16	80	15%	0%



## Beam details



### Beam intensities from 1-20m

1m	2m	3m	4m	5m	6m	7m	8m	9m	10m	11m	12m	13m	14m	15m	16m	17m	18m	19m	20m
3.3ft	6.6ft	9.8ft	13.1ft	16.4ft	19.7ft	23ft	26.2ft	29.5ft	32.8ft	36.1ft	39.4ft	42.7ft	45.9ft	49.2ft	52.5ft	55.8ft	59.1ft	62.3ft	65.6ft
125077lx	31269lx	13897lx	7817lx	5003lx	3474lx	2553lx	1954lx	1544lx	1251lx	1034lx	869lx	740lx	638lx	556lx	489lx	433lx	386lx	346lx	313lx
11620fcd	2905fcd	1291fcd	726fcd	465fcd	322.8fcd	237.1fcd	181.6fcd	143.5fcd	116.2fcd	96fcd	80.7fcd	68.8fcd	59.3fcd	51.6fcd	45.4fcd	40.2fcd	35.9fcd	32.2fcd	29.1fcd

### Intensities in 0° c-plane

0°	1°	2°	3°	4°	5°	6°	7°	8°	9°	10°	11°	12°	13°	14°	15°	16°	17°	18°	19°
125k	124k	122k	117k	111k	104k	94k	82k	68k	52k	36k	22k	12k	6k	2k	1k	1k	1k	1k	1k
100%	99%	97%	94%	89%	83%	75%	66%	54%	42%	29%	18%	10%	5%	2%	1%	1%	0%	0%	0%

### Intensities in 90° c-plane

0°	1°	2°	3°	4°	5°	6°	7°	8°	9°	10°	11°	12°	13°	14°	15°	16°	17°	18°	19°
125k	124k	122k	117k	111k	104k	94k	82k	68k	52k	36k	22k	12k	6k	2k	1k	1k	1k	1k	1k
100%	99%	97%	94%	89%	83%	75%	66%	54%	42%	29%	18%	10%	5%	2%	1%	1%	0%	0%	0%

### Intensities in 180° c-plane

0°	1°	2°	3°	4°	5°	6°	7°	8°	9°	10°	11°	12°	13°	14°	15°	16°	17°	18°	19°
125k	124k	122k	117k	111k	104k	94k	82k	68k	52k	36k	22k	12k	6k	2k	1k	1k	1k	1k	1k
100%	99%	97%	94%	89%	83%	75%	66%	54%	42%	29%	18%	10%	5%	2%	1%	1%	0%	0%	0%

### Intensities in 270° c-plane

0°	1°	2°	3°	4°	5°	6°	7°	8°	9°	10°	11°	12°	13°	14°	15°	16°	17°	18°	19°
125k	124k	122k	117k	111k	104k	94k	82k	68k	52k	36k	22k	12k	6k	2k	1k	1k	1k	1k	1k
100%	99%	97%	94%	89%	83%	75%	66%	54%	42%	29%	18%	10%	5%	2%	1%	1%	0%	0%	0%

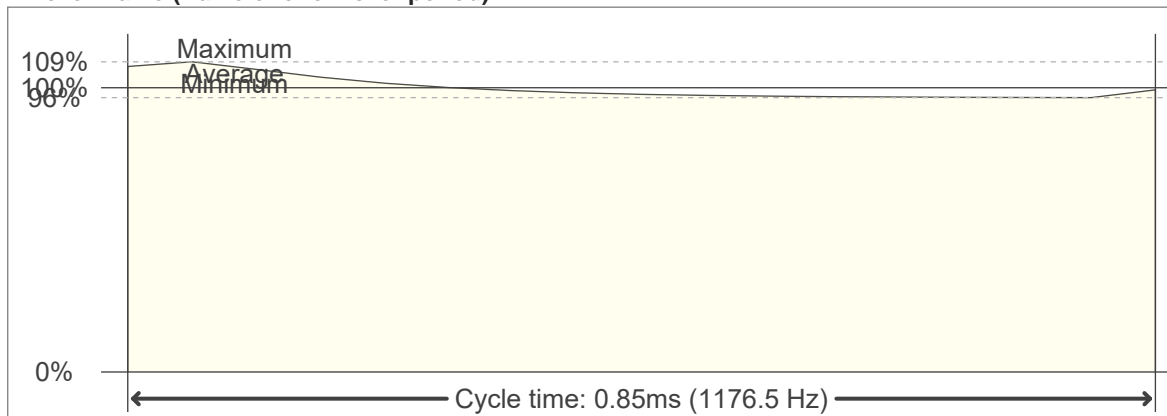
Beam angle 50%	Field angle 10%	Cutoff angle 2,5%	Intensity ratio in 120° cone	Intensity ratio in 90° cone
16.7°	23.9°	27.4°	70.9%	66.2%

# Flicker

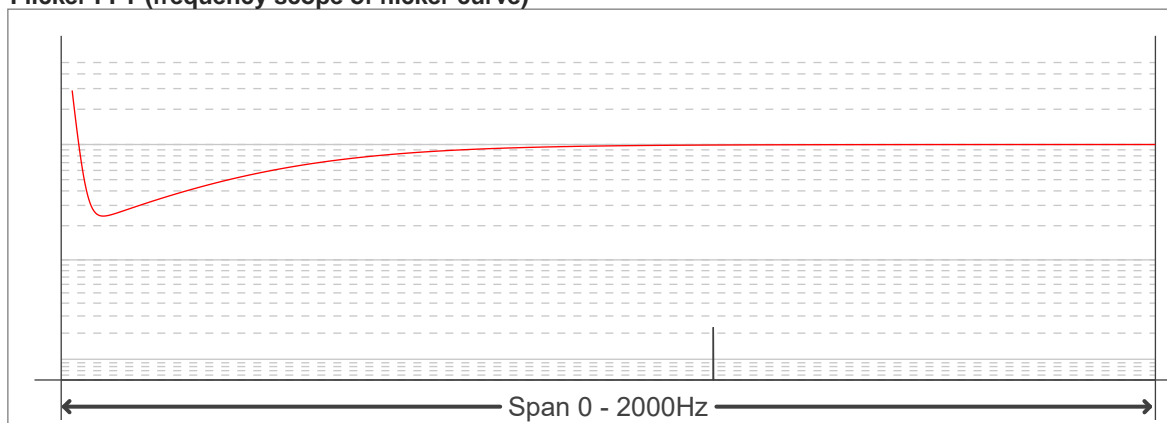
**Flicker curve (complete sampled flicker signal)**



**Flicker frame (frame of one flicker period)**



**Flicker FFT (frequency scope of flicker curve)**



**Flicker results:**

Flicker frequency:		1176.47 Hz	
Flicker index:	0.02	JA8/10 40Hz	0.12 %
Flicker percentage:	6.62 %	JA8/10 90Hz	0.13 %
SVM: (Visual flicker)	0.05	JA8/10 200Hz	0.13 %
PstLM	0	JA8/10 400Hz	0.14 %
Mp	0.03	JA8/10 1000Hz	0.41 %

**Flicker conditions:**

Sample rate:	20000 samples/second
--------------	----------------------