

Hydro Spot 1



Light Efficiency:



Light Quality:



Color Temperature:



Output: 4970 lm

Peak: 164337 cd

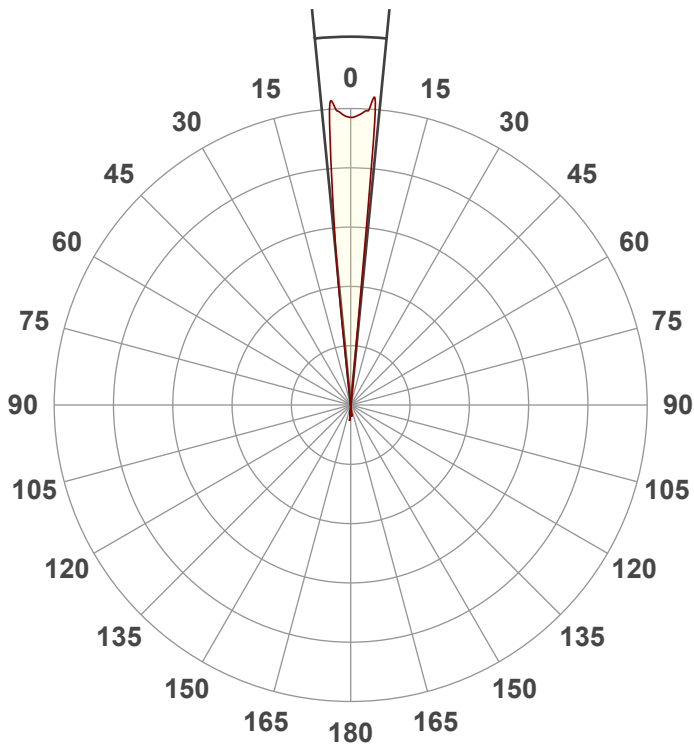
Power: 300 W

PF: 1.0



Beam Angle

11.2°



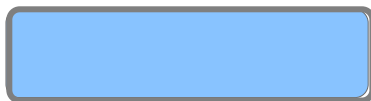
Test:

Zoom In

Date:

10/6/2022

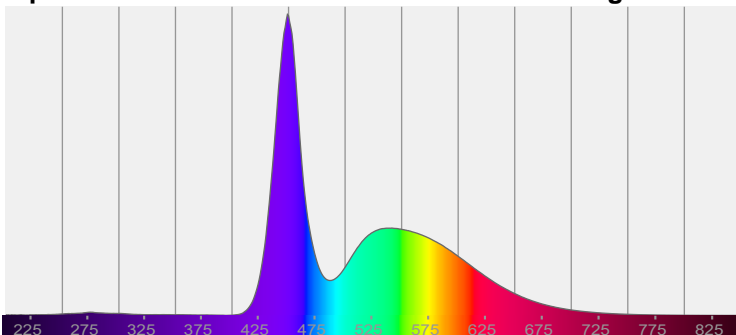
Note:



CIE 1931
x: 0.260
y: 0.250

Spectra

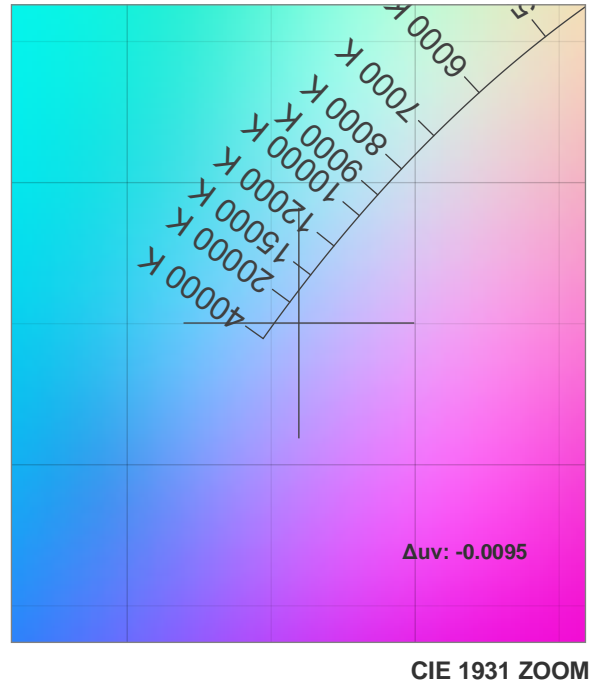
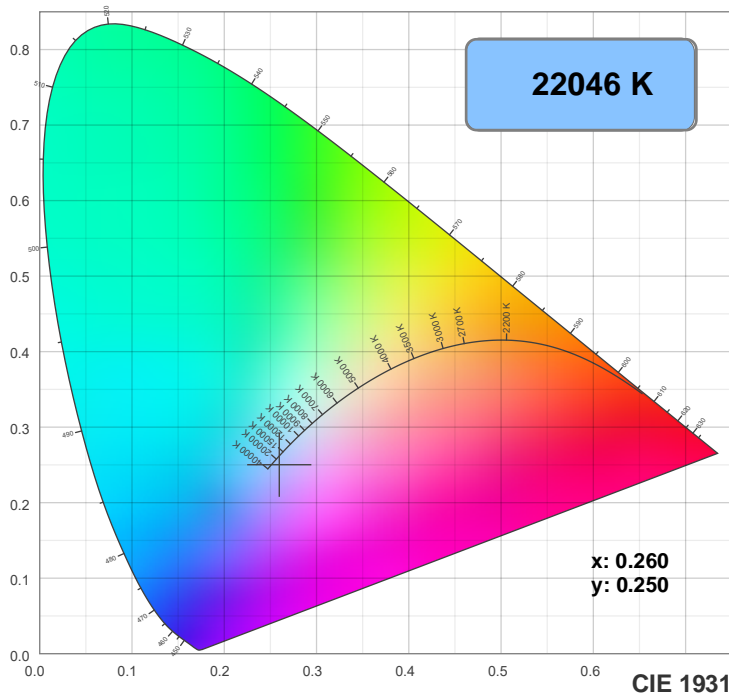
Dominant Wavelength: 469nm



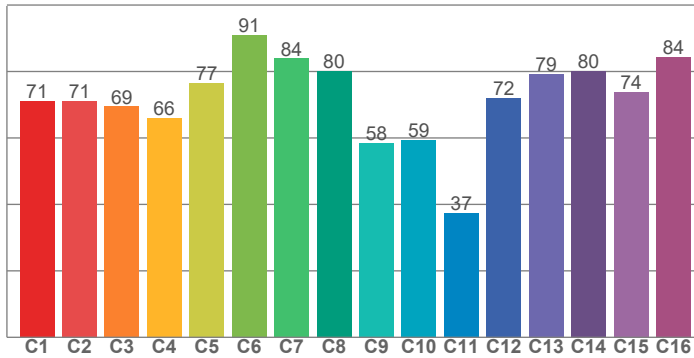
Power

Voltage: 120 V
Current: 2.51 A
Frequency: 0 Hz

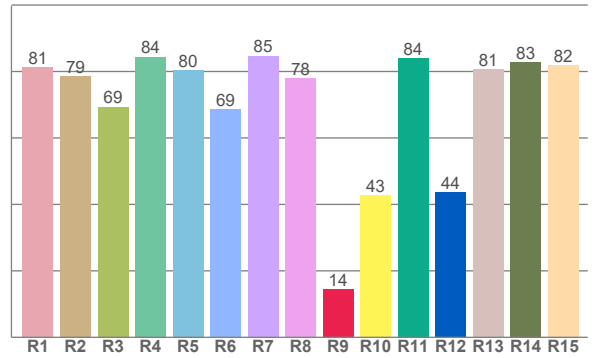
Color Details



TM30: 73.2



CRI: 78.1 (R1-R8)



CRI R values, only R1-R8 are used to calculate final CRI value

R1	R2	R3	R4	R5	R6	R7	R8	R9	R10	R11	R12	R13	R14	R15
81.2	78.6	69.4	84.4	80.4	68.5	84.7	77.9	14.4	42.8	84.0	43.6	80.6	82.8	82.0

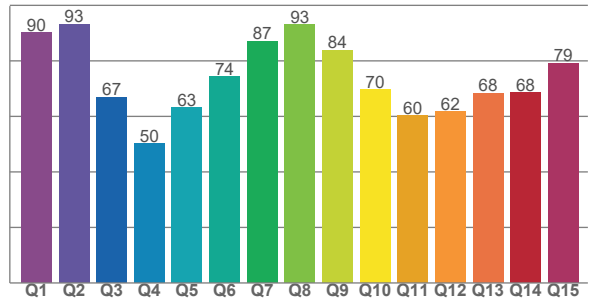
TM30 C values, 16 binned values out of total of 99 C values

C1	C2	C3	C4	C5	C6	C7	C8	C9	C10	C11	C12	C13	C14	C15	C16
71.2	71.2	69.5	66.1	76.6	90.9	83.9	80.2	58.5	59.4	37.4	72.0	79.2	80.2	73.9	84.4

CQS Q values

Q1	Q2	Q3	Q4	Q5	Q6	Q7	Q8	Q9	Q10	Q11	Q12	Q13	Q14	Q15
90.1	93.2	67.0	50.2	63.1	74.2	87.2	93.0	83.9	69.6	60.2	61.7	68.4	68.5	79.1

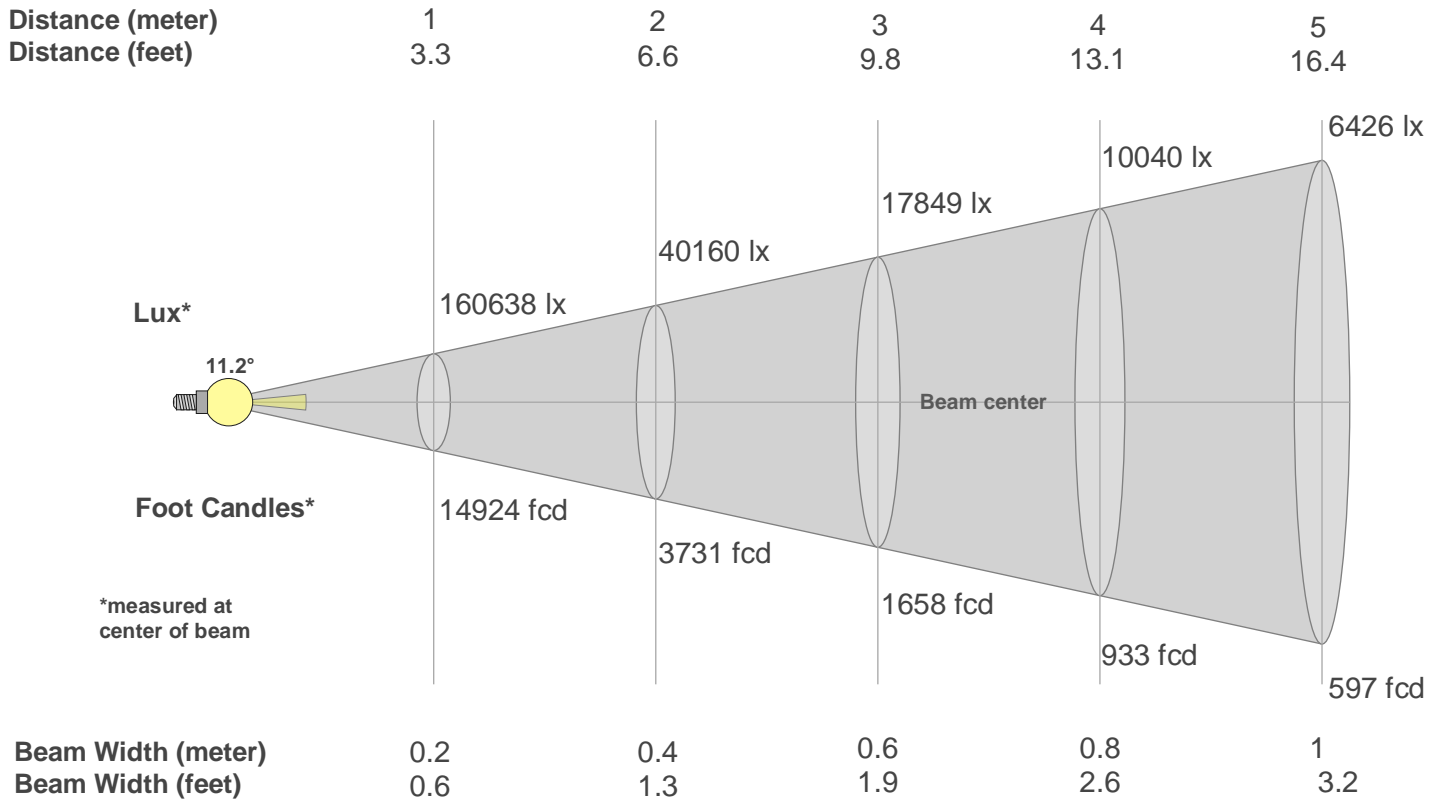
CQS: 71.0



Color Parameters

Color Temperature	Color Rendering Index	Red Component	Color Fidelity	Color Gamut	Color Quality Scale	Color Coordinate CIE 1931	Color Coordinate CIE 1931	Color Coordinate	Color Coordinate	Color Deviation from Black Body
CCT	CRI	CRI R9	TM30 Rf	TM30 Rg	CQS	x	y	u	v	Δuv
22046 K	78.1	14.4	73.2	95.0	71.0	0.260	0.250	0.189	0.274	-0.0095

Beam Details



Beam Intensities from 1-20m

m	1	2	3	4	5	6	7	8	9	10	11	12	13	14	15	16	17	18	19	20
ft	3.3	6.6	9.8	13.1	16.4	19.7	23	26.2	29.5	32.8	36.1	39.4	42.7	45.9	49.2	52.5	55.8	59.1	62.3	65.6
lx	160638	40160	17849	10040	6426	4462	3278	2510	1983	1606	1328	1116	951	820	714	627	556	496	445	402
fcd	14923.8	3730.9	1658.2	932.7	597	414.5	304.6	233.2	184.2	149.2	123.3	103.6	88.3	76.1	66.3	58.3	51.6	46.1	41.3	37.3

Intensities in 0° C-plane

0°	1°	2°	3°	4°	5°	6°	7°	8°	9°	10°	11°	12°	13°	14°	15°	16°	17°	18°	19°
161K	161K	163K	164K	163K	115K	60K	8K	0K	0K	0K	0K	0K	0K	0K	0K	0K	0K	0K	0K
100%	100%	101%	102%	102%	72%	38%	5%	0%	0%	0%	0%	0%	0%	0%	0%	0%	0%	0%	0%

Intensities in 90° C-plane

0°	1°	2°	3°	4°	5°	6°	7°	8°	9°	10°	11°	12°	13°	14°	15°	16°	17°	18°	19°
161K	161K	163K	164K	163K	115K	60K	8K	0K	0K	0K	0K	0K	0K	0K	0K	0K	0K	0K	0K
100%	100%	101%	102%	102%	72%	38%	5%	0%	0%	0%	0%	0%	0%	0%	0%	0%	0%	0%	0%

Intensities in 180° C-plane

0°	1°	2°	3°	4°	5°	6°	7°	8°	9°	10°	11°	12°	13°	14°	15°	16°	17°	18°	19°
161K	161K	162K	164K	162K	143K	40K	3K	0K	0K	0K	0K	0K	0K	0K	0K	0K	0K	0K	0K
100%	100%	101%	102%	101%	89%	25%	2%	0%	0%	0%	0%	0%	0%	0%	0%	0%	0%	0%	0%

Intensities in 270° C-plane

0°	1°	2°	3°	4°	5°	6°	7°	8°	9°	10°	11°	12°	13°	14°	15°	16°	17°	18°	19°
161K	161K	162K	164K	162K	143K	40K	3K	0K	0K	0K	0K	0K	0K	0K	0K	0K	0K	0K	0K
100%	100%	101%	102%	101%	89%	25%	2%	0%	0%	0%	0%	0%	0%	0%	0%	0%	0%	0%	0%

Beam Angle 50%	Field Angle 10%	Cutoff Angle 2,5%	Intensity Ratio in 120° Cone	Intensity Ratio in 90° Cone
11.2°	13.1°	13.6°	100.0%	100.0%