

Light efficiency:



Light quality:



Color temperature:

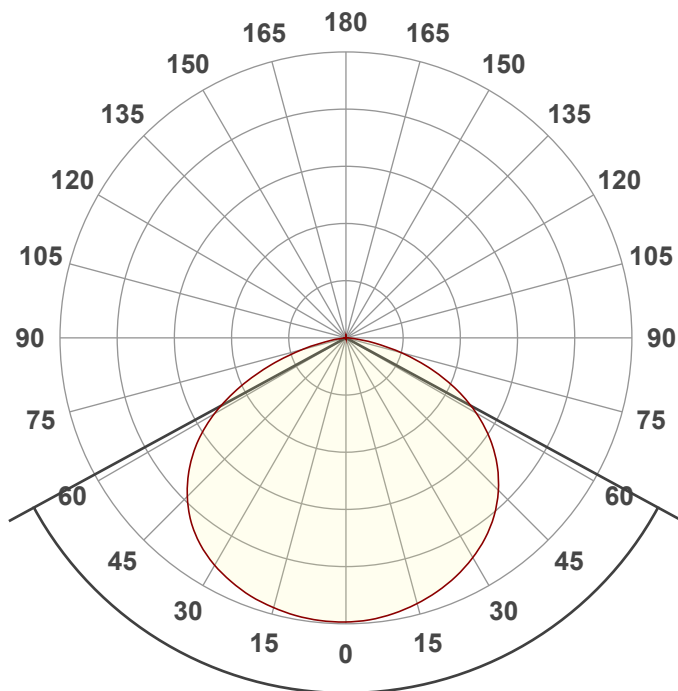


Output: 4974 lm

Peak: 1582 cd

Power: 122.2 W

PF: 0.99



Tracking number: [n/a](#)

Product name:

**JoltBar FXIP**

Item number:

**7000K**

Date and time:

**4/17/2024 3:18:45 PM**

Description:

Beam angle 122.9°

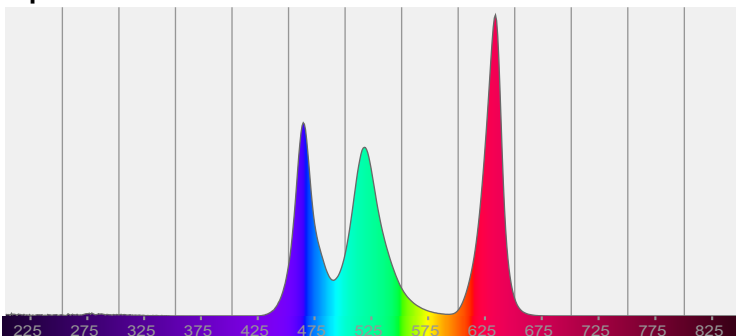


CIE 1931

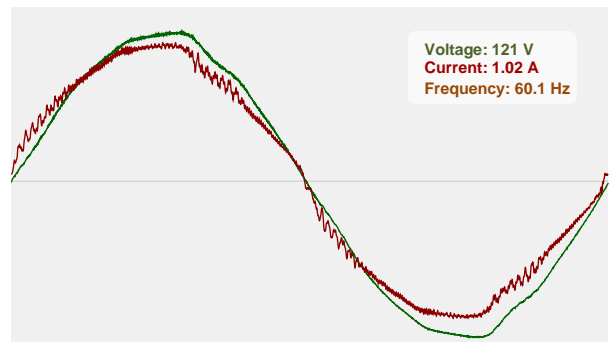
x: 0.305

y: 0.326

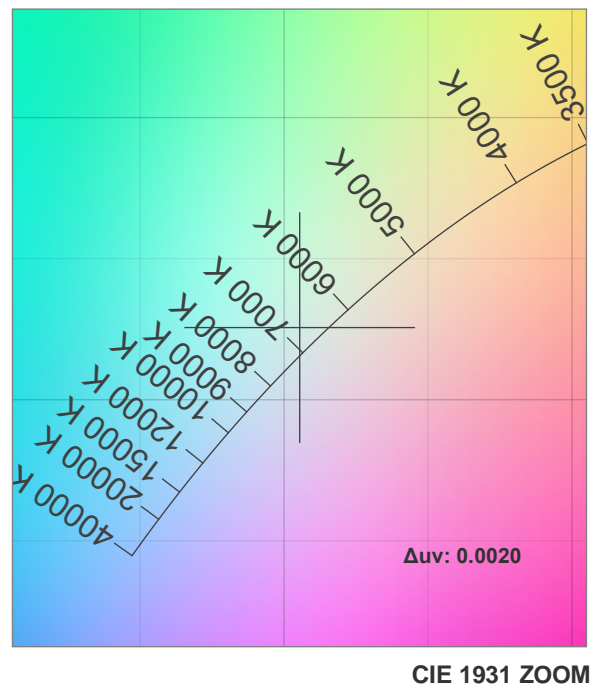
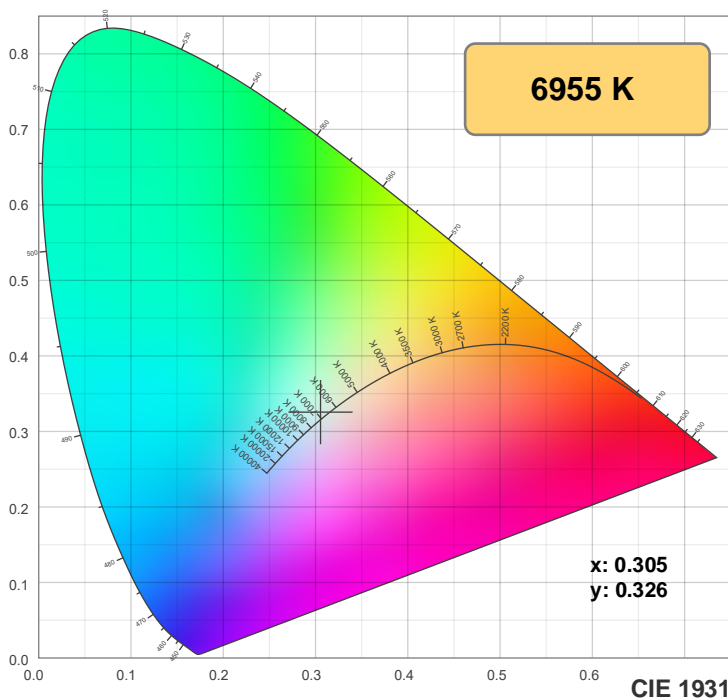
Spectra



Power

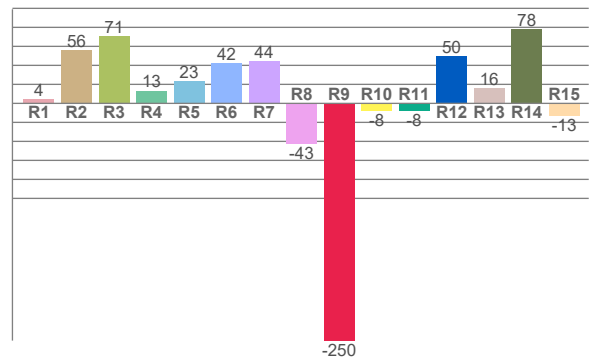
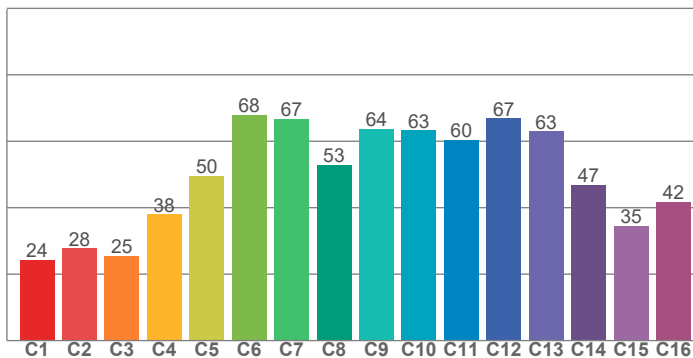


## Color details



**TM-30: 49.1**

**CRI: 26.3 (R1-R8)**



CRI R values, only R1-R8 are used to calculate final CRI value

R1	R2	R3	R4	R5	R6	R7	R8	R9	R10	R11	R12	R13	R14	R15
4.1	55.8	70.7	13.2	23.0	42.0	44.0	-42.9	-249.7	-7.5	-8.1	49.9	15.8	78.1	-13.3

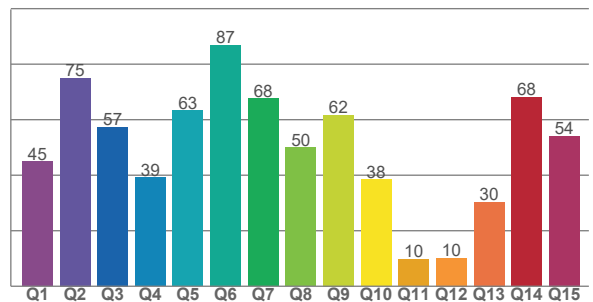
TM30 C values, 16 binned values out of total of 99 C values

C1	C2	C3	C4	C5	C6	C7	C8	C9	C10	C11	C12	C13	C14	C15	C16
24.3	27.7	25.4	38.0	49.5	67.9	66.8	52.9	63.7	63.3	60.3	66.9	63.0	46.8	34.6	41.7

CQS Q values

Q1	Q2	Q3	Q4	Q5	Q6	Q7	Q8	Q9	Q10	Q11	Q12	Q13	Q14	Q15
44.9	75.0	57.3	39.2	63.2	87.0	67.6	49.9	61.8	38.5	9.7	10.1	30.4	68.1	54.1

**CQS: 45.0**



### Color parameters

Color temperature	Color rendering index	Red component	Color fidelity	Color gamut	Color quality scale	Color coordinate cie 1931	Color coordinate cie 1931	Color coordinate	Color coordinate	Color deviation from black body
CCT	CRI	CRI R9	TM30 Rf	TM30 Rg	CQS	x	y	u	v	$\Delta uv$
6955 K	26.3	-249.7	49.1	110.6	45.0	0.305	0.326	0.194	0.310	0.0020

## TM-30 details

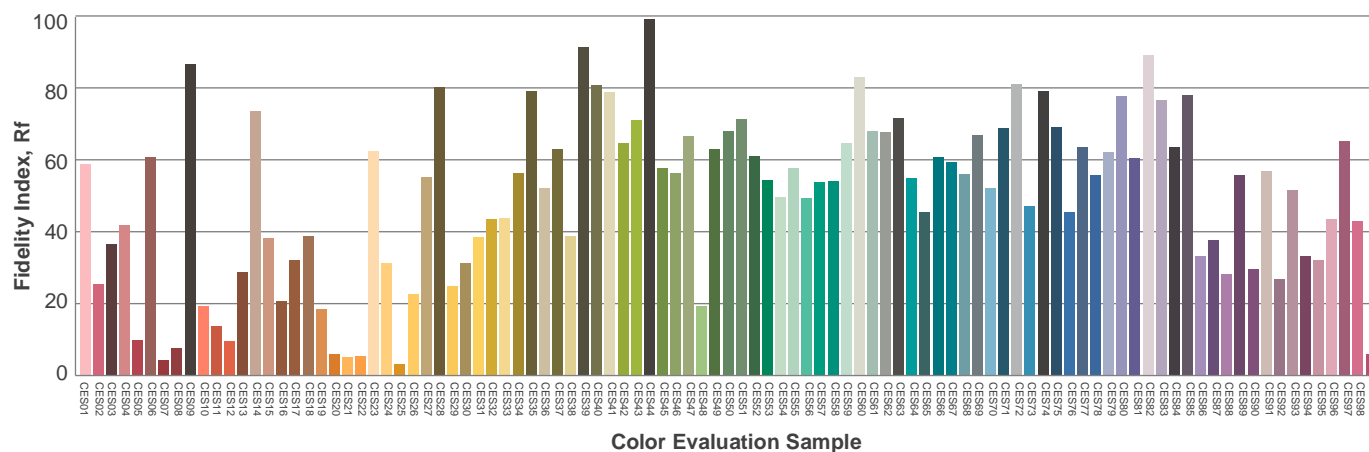
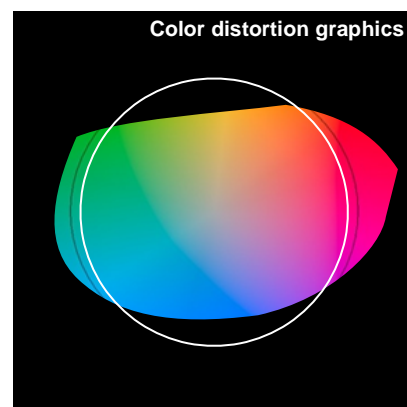
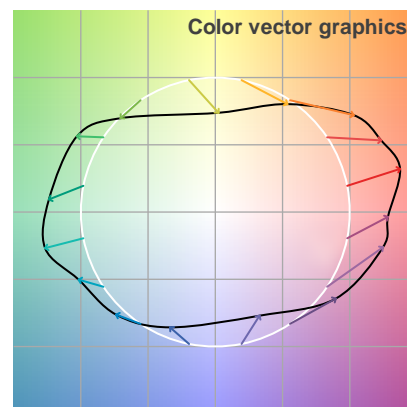
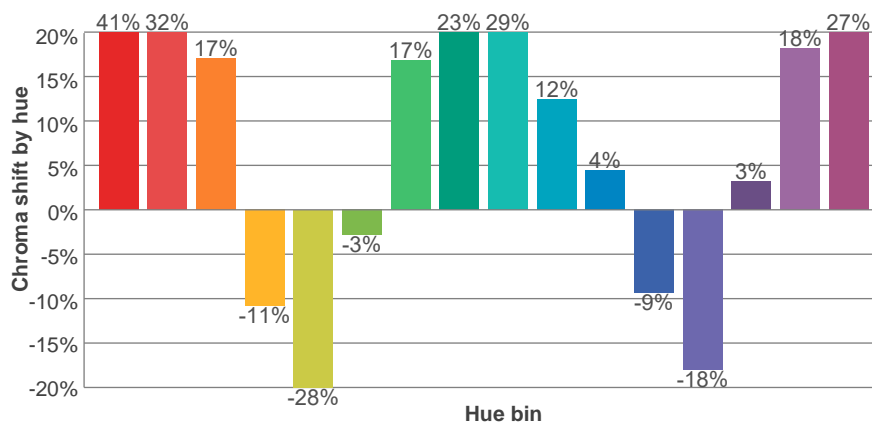
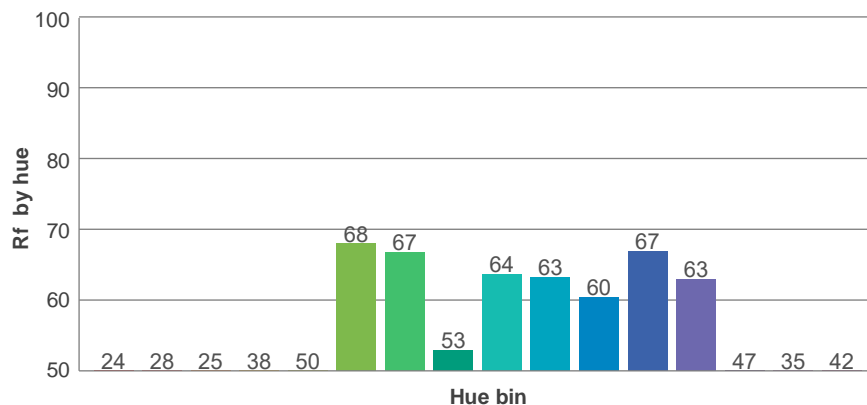
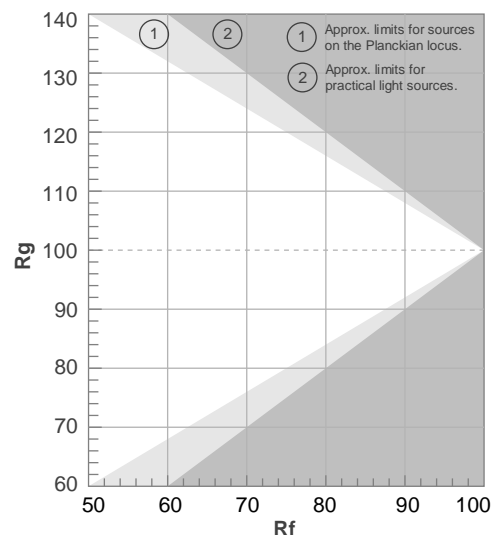
**Rf 49.1**

Fidelity index Rf

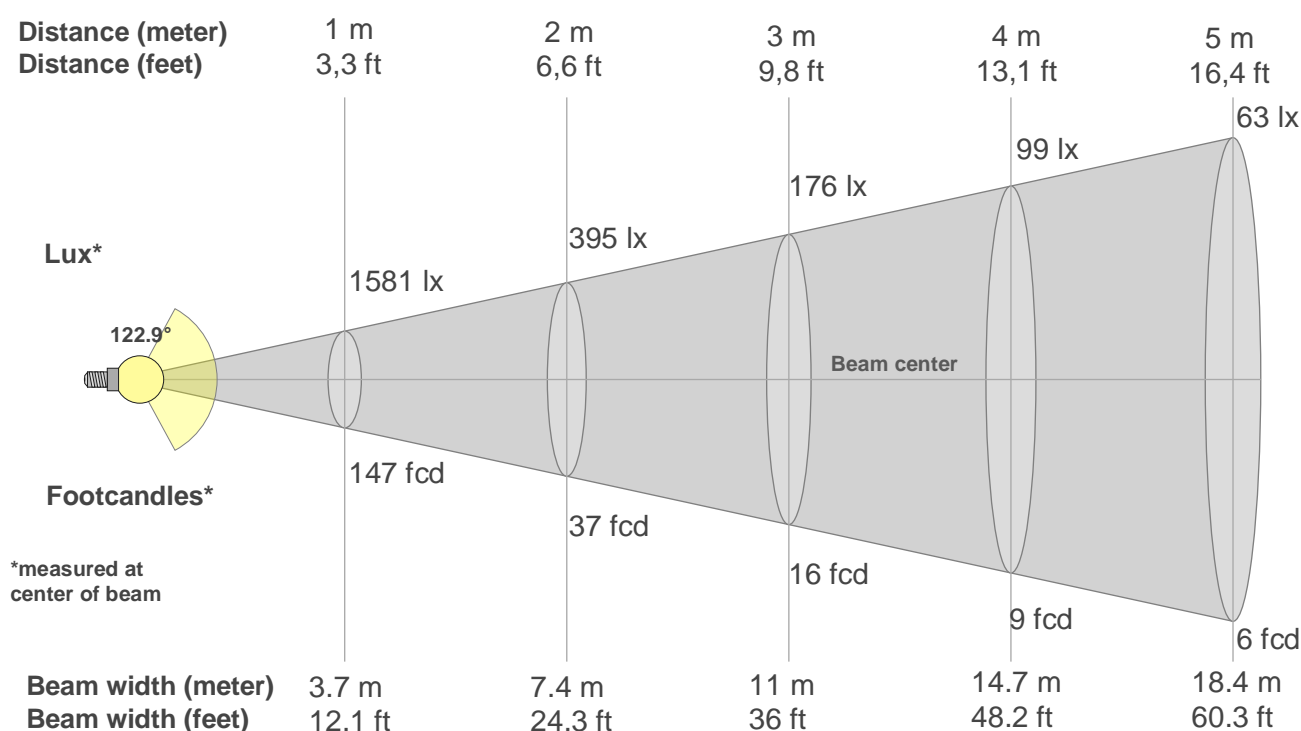
**Rg 110.6**

Gamut index Rg

Hue Bin	Ri	Shifts (%)	
		Chroma	Hue
1	24	41%	5%
2	28	32%	-24%
3	25	17%	-45%
4	38	-11%	-37%
5	50	-28%	-17%
6	68	-3%	20%
7	67	17%	10%
8	53	23%	15%
9	64	29%	2%
10	63	12%	-15%
11	60	4%	-19%
12	67	-9%	-16%
13	63	-18%	17%
14	47	3%	39%
15	35	18%	48%
16	42	27%	22%



## Beam details



### Beam intensities from 1-20m

1m	2m	3m	4m	5m	6m	7m	8m	9m	10m	11m	12m	13m	14m	15m	16m	17m	18m	19m	20m
3.3ft	6.6ft	9.8ft	13.1ft	16.4ft	19.7ft	23ft	26.2ft	29.5ft	32.8ft	36.1ft	39.4ft	42.7ft	45.9ft	49.2ft	52.5ft	55.8ft	59.1ft	62.3ft	65.6ft
1581lx	395lx	176lx	99lx	63lx	44lx	32lx	25lx	20lx	16lx	13lx	11lx	9lx	8lx	7lx	6lx	5lx	5lx	4lx	4lx
146.9fcd	36.7fcd	16.3fcd	9.2fcd	5.9fcd	4.1fcd	3fcd	2.3fcd	1.8fcd	1.5fcd	1.2fcd	1fcd	0.9fcd	0.7fcd	0.7fcd	0.6fcd	0.5fcd	0.5fcd	0.4fcd	0.4fcd

### Intensities in 0° c-plane

0°	5°	10°	15°	20°	25°	30°	35°	40°	45°	50°	55°	60°	65°	70°	75°	80°	85°	90°	95°
1581	1574	1556	1531	1499	1460	1412	1355	1285	1199	1097	978	837	677	500	320	155	42	1	0
100%	100%	98%	97%	95%	92%	89%	86%	81%	76%	69%	62%	53%	43%	32%	20%	10%	3%	0%	0%

### Intensities in 90° c-plane

0°	5°	10°	15°	20°	25°	30°	35°	40°	45°	50°	55°	60°	65°	70°	75°	80°	85°	90°	95°
1581	1574	1556	1531	1499	1460	1412	1355	1285	1199	1097	978	837	677	500	320	155	42	1	0
100%	100%	98%	97%	95%	92%	89%	86%	81%	76%	69%	62%	53%	43%	32%	20%	10%	3%	0%	0%

### Intensities in 180° c-plane

0°	5°	10°	15°	20°	25°	30°	35°	40°	45°	50°	55°	60°	65°	70°	75°	80°	85°	90°	95°
1581	1580	1571	1554	1533	1501	1461	1409	1339	1248	1138	1007	845	655	450	254	96	12	0	0
100%	100%	99%	98%	97%	95%	92%	89%	85%	79%	72%	64%	53%	41%	28%	16%	6%	1%	0%	0%

### Intensities in 270° c-plane

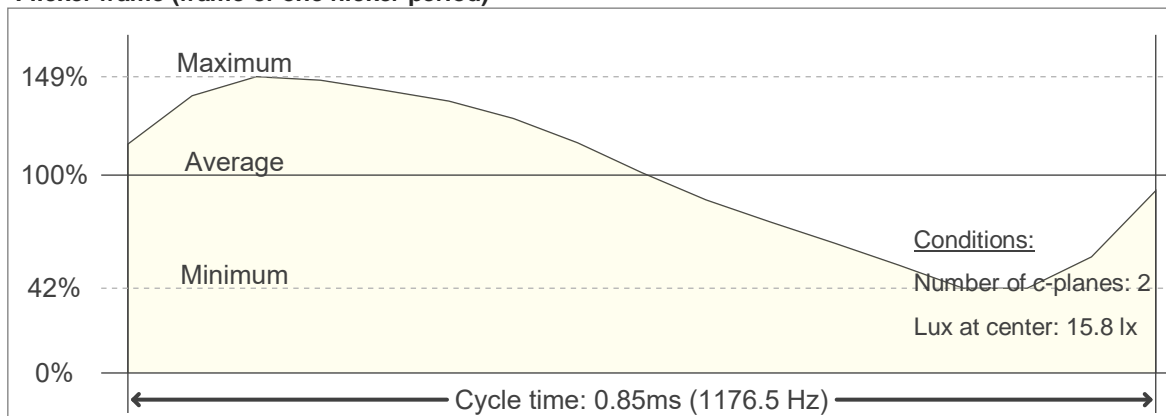
0°	5°	10°	15°	20°	25°	30°	35°	40°	45°	50°	55°	60°	65°	70°	75°	80°	85°	90°	95°
1581	1580	1571	1554	1533	1501	1461	1409	1339	1248	1138	1007	845	655	450	254	96	12	0	0
100%	100%	99%	98%	97%	95%	92%	89%	85%	79%	72%	64%	53%	41%	28%	16%	6%	1%	0%	0%

Beam angle 50%	Field angle 10%	Cutoff angle 2,5%	Intensity ratio in 120° cone	Intensity ratio in 90° cone
122.9°	157.9°	168.5°	79.6%	52.3%

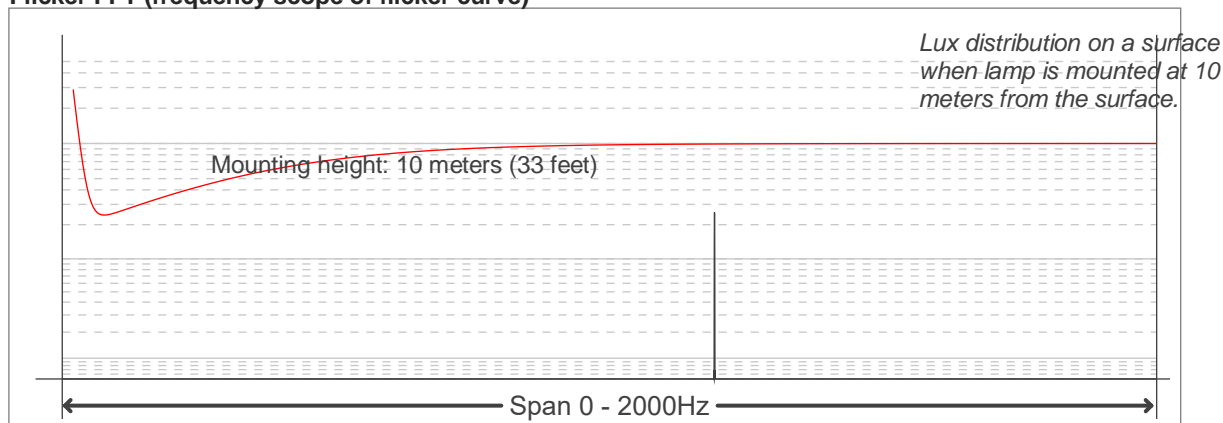
## Flicker

Flicker curve (complete sampled flicker signal)

Flicker frame (frame of one flicker period)



Flicker FFT (frequency scope of flicker curve)



### Flicker results:

Flicker frequency:		1176.47 Hz	
Flicker index:	0.16	JA8/10 40Hz	0.4 %
Flicker percentage:	60.61 %	JA8/10 90Hz	0.88 %
SVM: (Visual flicker)	0.52	JA8/10 200Hz	1.93 %
PstLM	0	JA8/10 400Hz	3.79 %
Mp	0.07	JA8/10 1000Hz	9.53 %

### Flicker conditions:

Sample rate:	20000 samples/second
--------------	----------------------