

# UBL12H



Light Efficiency:

29 Lumen/Watt

Light Quality:

CRI: 62.1

Color Temperature:

9692 K

Output: 1767 lm

Peak: 7253 cd

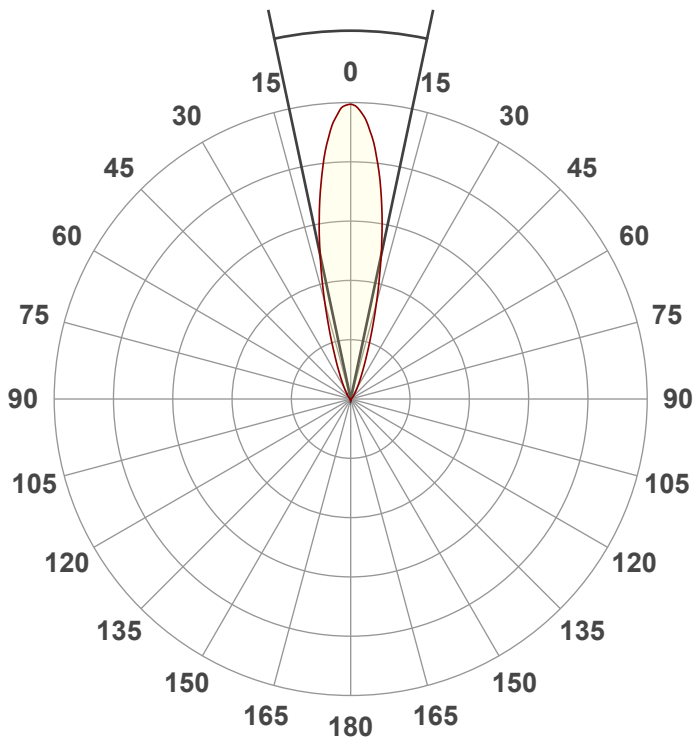
Power: 61.9 W

PF: 0.58



Beam Angle

23.9°



Test:

Full on No UV

Date:

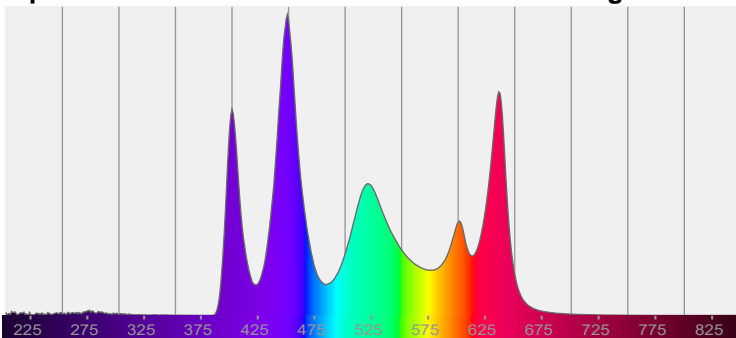
2/6/2024

Note:

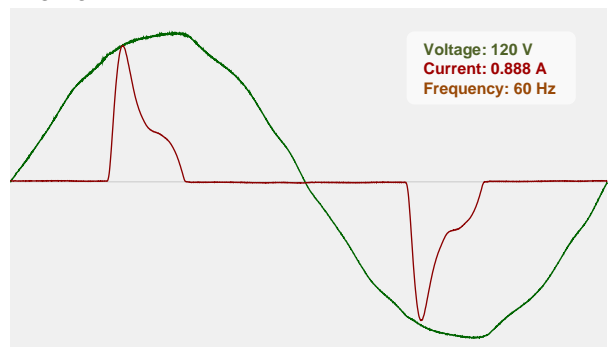
CIE 1931  
x: 0.295  
y: 0.265

Spectra

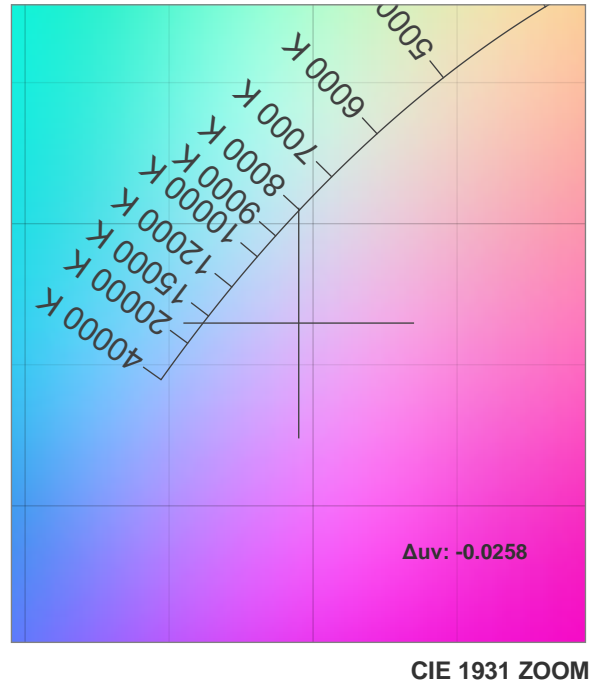
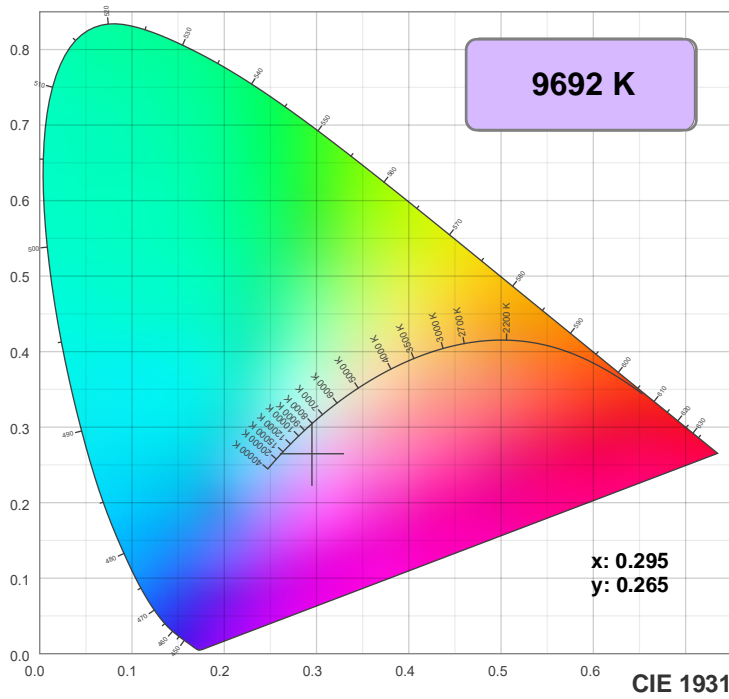
Dominant Wavelength: 360nm



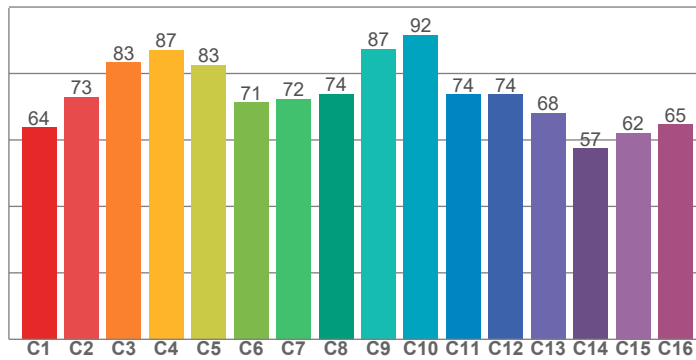
Power



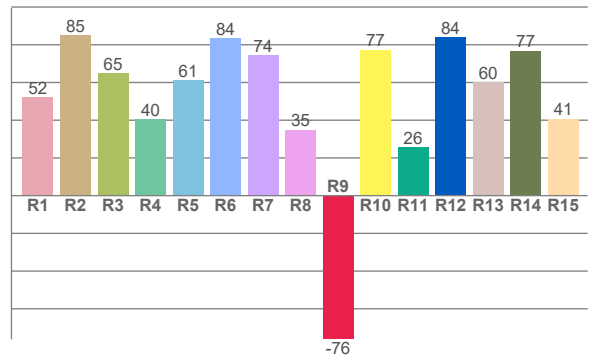
## Color Details



TM30: 75.8



CRI: 62.1 (R1-R8)



CRI R values, only R1-R8 are used to calculate final CRI value

R1	R2	R3	R4	R5	R6	R7	R8	R9	R10	R11	R12	R13	R14	R15
52.2	85.2	64.9	40.4	61.0	83.6	74.4	35.0	-76.2	77.4	25.5	84.1	60.0	76.8	40.7

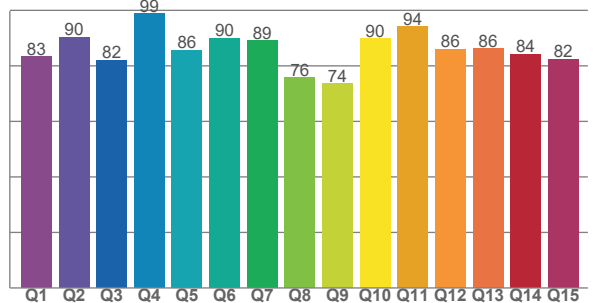
TM30 C values, 16 binned values out of total of 99 C values

C1	C2	C3	C4	C5	C6	C7	C8	C9	C10	C11	C12	C13	C14	C15	C16
63.7	72.9	83.4	87.0	82.6	71.3	72.4	73.8	87.4	91.6	73.6	73.6	68.2	57.5	62.1	64.7

CQS Q values

Q1	Q2	Q3	Q4	Q5	Q6	Q7	Q8	Q9	Q10	Q11	Q12	Q13	Q14	Q15
83.2	90.4	82.1	98.8	85.7	90.0	89.0	75.7	73.5	89.8	94.0	86.0	86.1	84.2	82.4

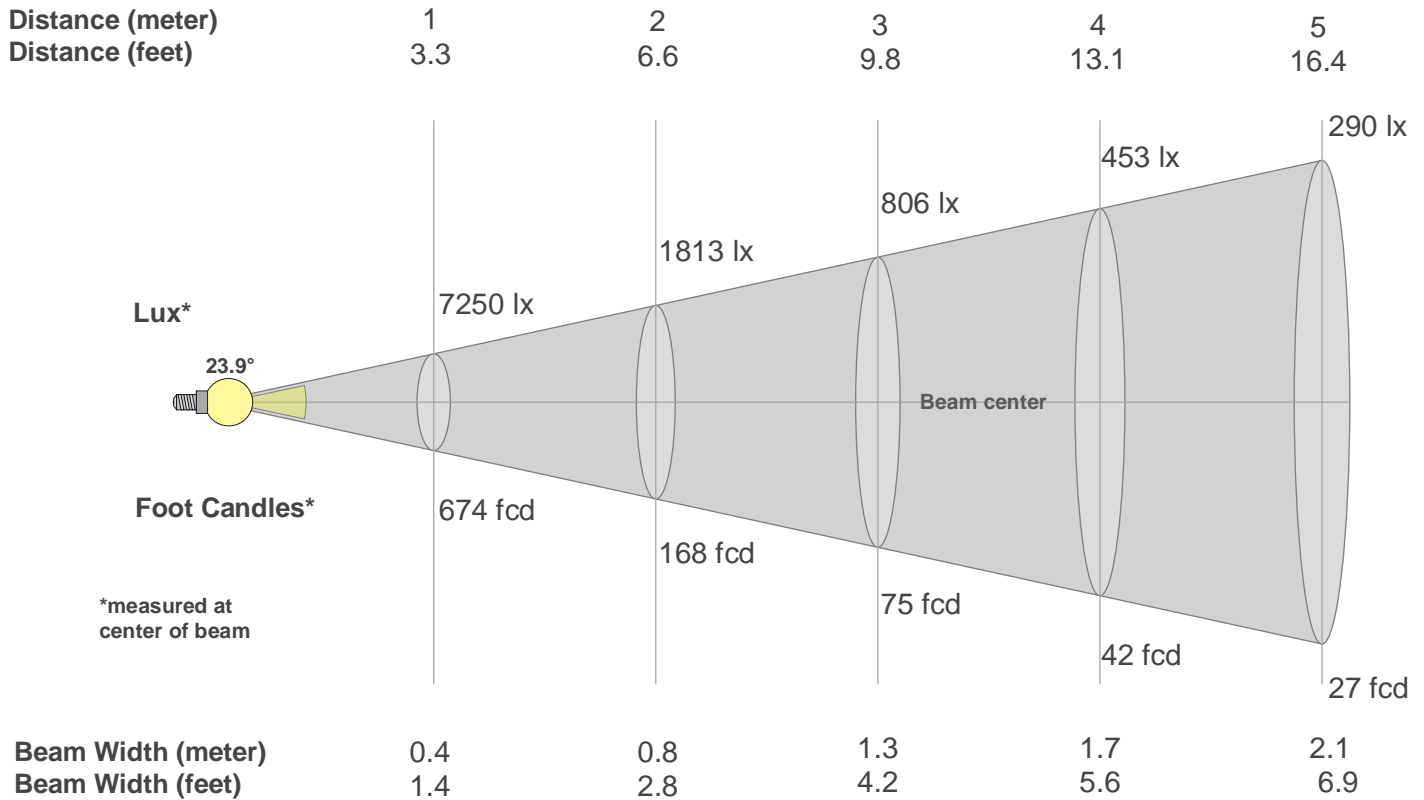
CQS: 84.7



## Color Parameters

Color Temperature	Color Rendering Index	Red Component	Color Fidelity	Color Gamut	Color Quality Scale	Color Coordinate CIE 1931	Color Coordinate CIE 1931	Color Coordinate	Color Coordinate	Color Deviation from Black Body
CCT	CRI	CRI R9	TM30 Rf	TM30 Rg	CQS	x	y	u	v	Δuv
9692 K	62.1	-76.2	75.8	121.7	84.7	0.295	0.265	0.211	0.284	-0.0258

## Beam Details



Beam Intensities from 1-20m

m	1	2	3	4	5	6	7	8	9	10	11	12	13	14	15	16	17	18	19	20
ft	3.3	6.6	9.8	13.1	16.4	19.7	23	26.2	29.5	32.8	36.1	39.4	42.7	45.9	49.2	52.5	55.8	59.1	62.3	65.6
lx	7250	1813	806	453	290	201	148	113	90	73	60	50	43	37	32	28	25	22	20	18
fcd	673.6	168.4	74.8	42.1	26.9	18.7	13.7	10.5	8.3	6.7	5.6	4.7	4	3.4	3	2.6	2.3	2.1	1.9	1.7

Intensities in 0° C-plane

0°	2°	4°	6°	8°	10°	12°	14°	16°	18°	20°	22°	24°	26°	28°	30°	32°	34°	36°	38°
7250	7139	6720	6081	5287	4460	3612	2828	2122	1576	1152	870	656	507	397	311	258	200	170	144
100%	98%	93%	84%	73%	62%	50%	39%	29%	22%	16%	12%	9%	7%	5%	4%	4%	3%	2%	2%

Intensities in 90° C-plane

0°	2°	4°	6°	8°	10°	12°	14°	16°	18°	20°	22°	24°	26°	28°	30°	32°	34°	36°	38°
7250	7139	6720	6081	5287	4460	3612	2828	2122	1576	1152	870	656	507	397	311	258	200	170	144
100%	98%	93%	84%	73%	62%	50%	39%	29%	22%	16%	12%	9%	7%	5%	4%	4%	3%	2%	2%

Intensities in 180° C-plane

0°	2°	4°	6°	8°	10°	12°	14°	16°	18°	20°	22°	24°	26°	28°	30°	32°	34°	36°	38°
7250	7075	6646	6025	5279	4452	3612	2813	2125	1573	1164	873	667	517	408	324	261	211	174	150
100%	98%	92%	83%	73%	61%	50%	39%	29%	22%	16%	12%	9%	7%	6%	4%	4%	3%	2%	2%

Intensities in 270° C-plane

0°	2°	4°	6°	8°	10°	12°	14°	16°	18°	20°	22°	24°	26°	28°	30°	32°	34°	36°	38°
7250	7075	6646	6025	5279	4452	3612	2813	2125	1573	1164	873	667	517	408	324	261	211	174	150
100%	98%	92%	83%	73%	61%	50%	39%	29%	22%	16%	12%	9%	7%	6%	4%	4%	3%	2%	2%

Beam Angle 50%	Field Angle 10%	Cutoff Angle 2,5%	Intensity Ratio in 120° Cone	Intensity Ratio in 90° Cone
23.9°	46.7°	70.3°	98.1%	94.4%