

UBL6H



Light Efficiency:



Light Quality:



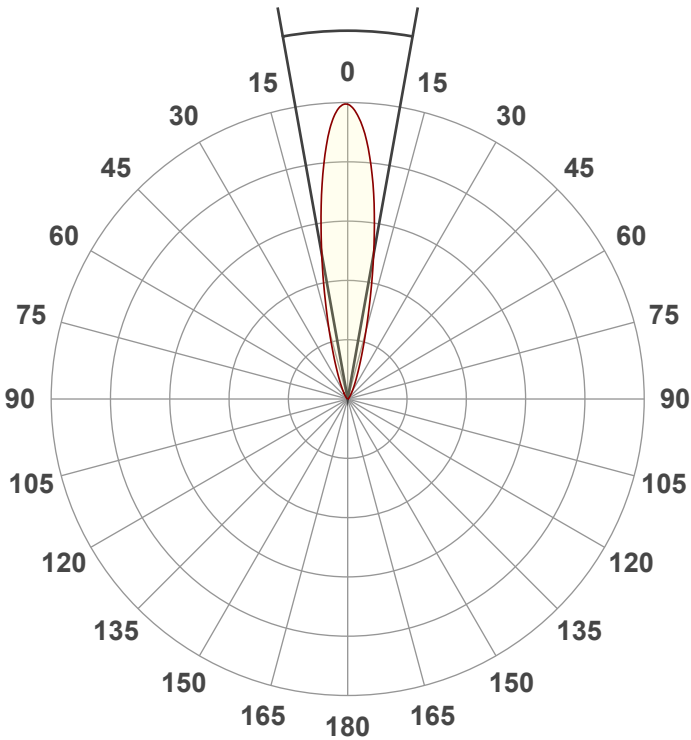
Color Temperature:



Output: 905 lm
Peak: 4754 cd
Power: 26.8 W
PF: 0.57



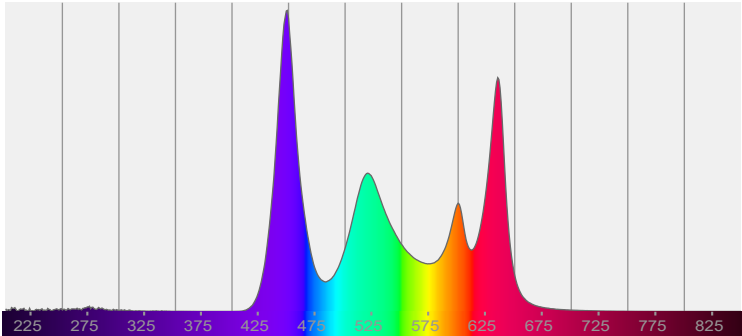
Beam Angle 20.3°



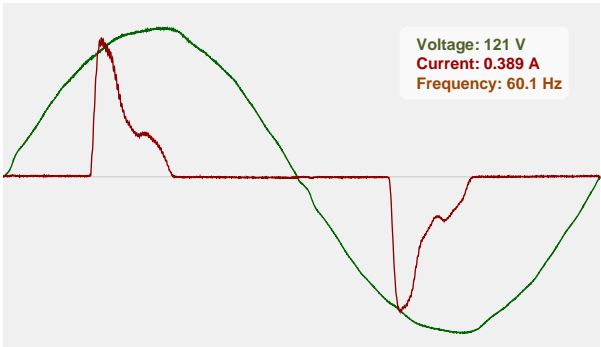
CIE 1931
x: 0.304
y: 0.277

Test:
Full On No UV Frost Filter
Date:
2/2/2024
Note:

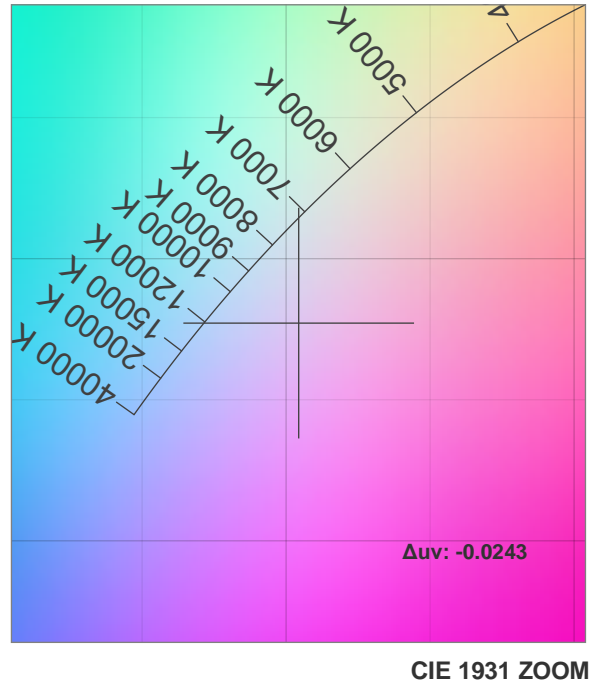
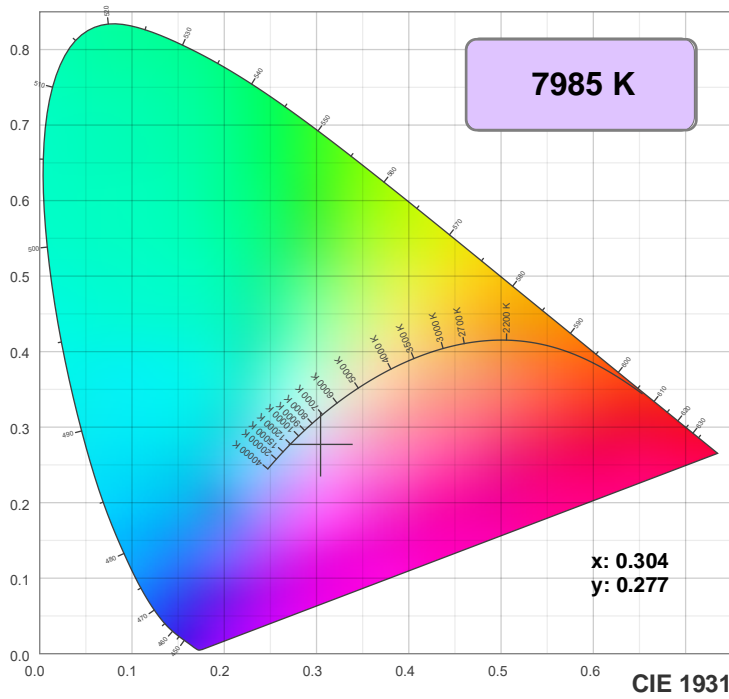
Spectra Dominant Wavelength:360nm



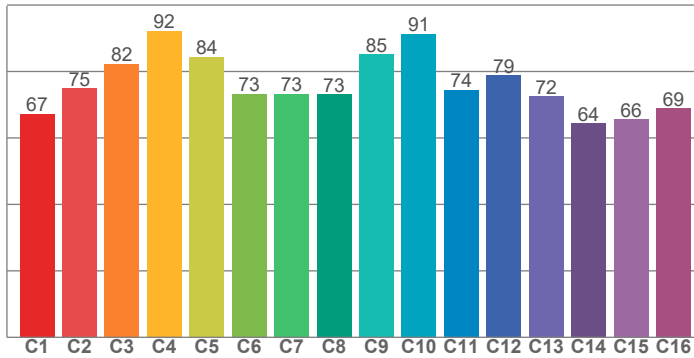
Power



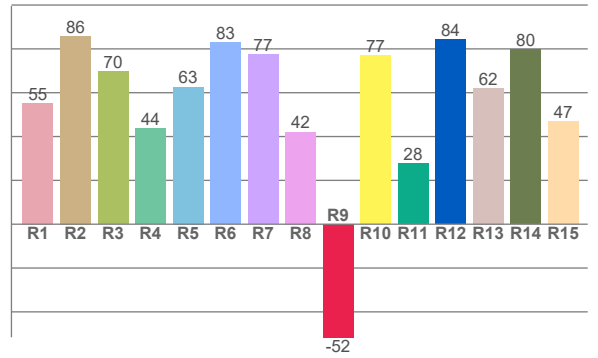
Color Details



TM30: 77.9



CRI: 65.0 (R1-R8)



CRI R values, only R1-R8 are used to calculate final CRI value

R1	R2	R3	R4	R5	R6	R7	R8	R9	R10	R11	R12	R13	R14	R15
55.3	85.8	69.8	43.8	62.7	82.9	77.5	42.2	-51.6	77.1	27.6	84.4	62.1	79.6	46.9

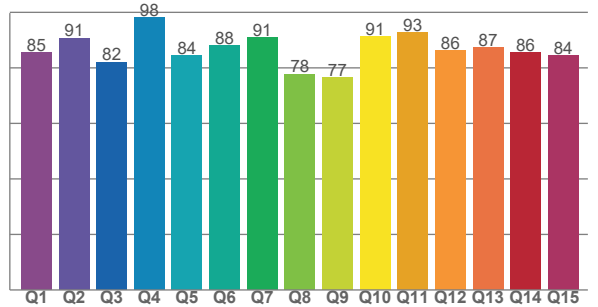
TM30 C values, 16 binned values out of total of 99 C values

C1	C2	C3	C4	C5	C6	C7	C8	C9	C10	C11	C12	C13	C14	C15	C16
67.3	75.0	82.3	92.2	84.4	73.2	73.2	73.2	85.1	91.3	74.5	78.8	72.4	64.3	65.6	69.0

CQS Q values

Q1	Q2	Q3	Q4	Q5	Q6	Q7	Q8	Q9	Q10	Q11	Q12	Q13	Q14	Q15
85.4	90.7	82.1	98.0	84.4	88.0	90.9	77.7	76.5	91.2	92.6	86.2	87.3	85.6	84.5

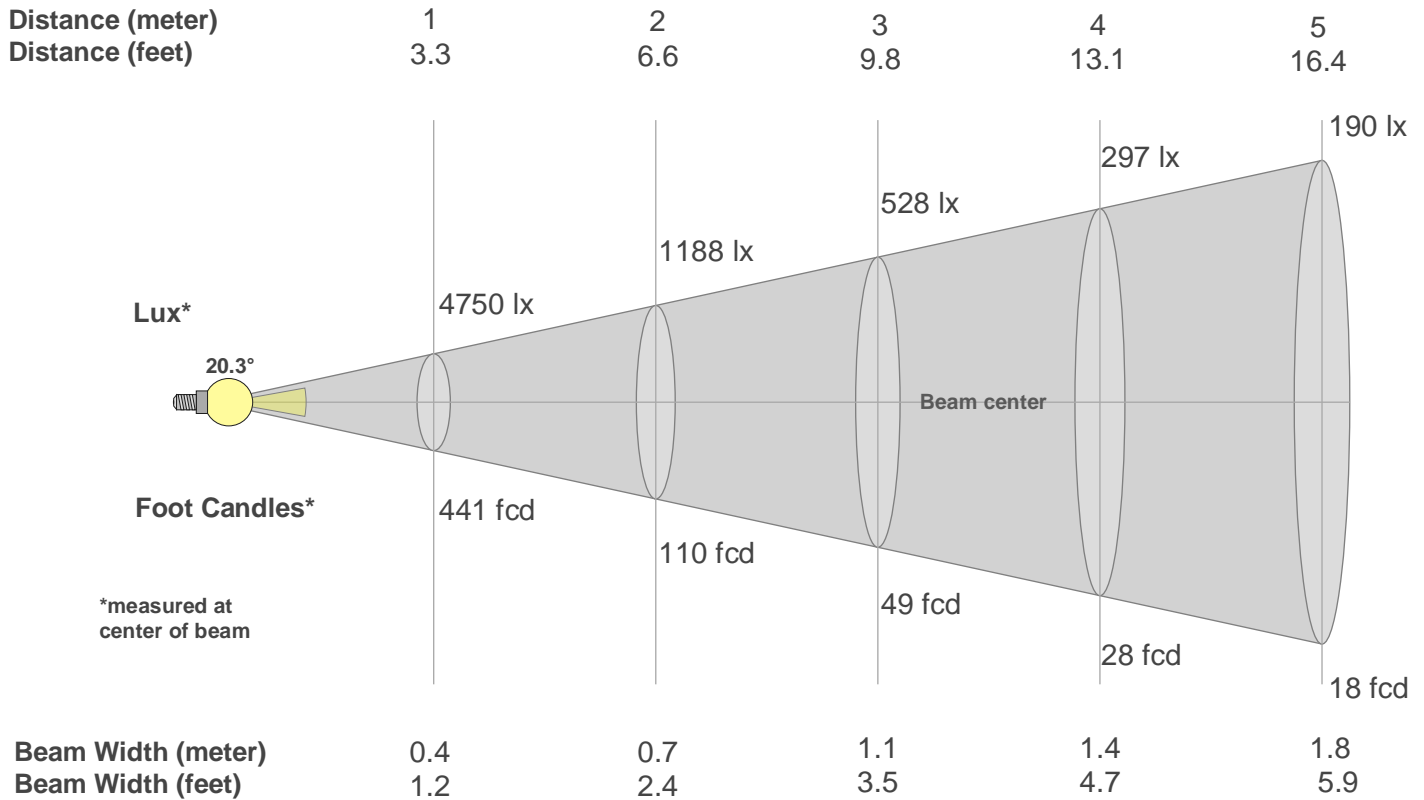
CQS: 85.7



Color Parameters

Color Temperature	Color Rendering Index	Red Component	Color Fidelity	Color Gamut	Color Quality Scale	Color Coordinate CIE 1931	Color Coordinate CIE 1931	Color Coordinate	Color Coordinate	Color Deviation from Black Body
CCT	CRI	CRI R9	TM30 Rf	TM30 Rg	CQS	x	y	u	v	Δuv
7985 K	65.0	-51.6	77.9	120.6	85.7	0.304	0.277	0.213	0.291	-0.0243

Beam Details



Beam Intensities from 1-20m

m	1	2	3	4	5	6	7	8	9	10	11	12	13	14	15	16	17	18	19	20
ft	3.3	6.6	9.8	13.1	16.4	19.7	23	26.2	29.5	32.8	36.1	39.4	42.7	45.9	49.2	52.5	55.8	59.1	62.3	65.6
lx	4750	1188	528	297	190	132	97	74	59	48	39	33	28	24	21	19	16	15	13	12
fcd	441.3	110.3	49	27.6	17.7	12.3	9	6.9	5.4	4.4	3.6	3.1	2.6	2.3	2	1.7	1.5	1.4	1.2	1.1

Intensities in 0° C-plane

0°	2°	4°	6°	8°	10°	12°	14°	16°	18°	20°	22°	24°	26°	28°	30°	32°	34°	36°	38°
4750	4666	4313	3744	3083	2422	1841	1360	995	727	538	405	308	237	187	145	114	99	82	65
100%	98%	91%	79%	65%	51%	39%	29%	21%	15%	11%	9%	6%	5%	4%	3%	2%	2%	2%	1%

Intensities in 90° C-plane

0°	2°	4°	6°	8°	10°	12°	14°	16°	18°	20°	22°	24°	26°	28°	30°	32°	34°	36°	38°
4750	4666	4313	3744	3083	2422	1841	1360	995	727	538	405	308	237	187	145	114	99	82	65
100%	98%	91%	79%	65%	51%	39%	29%	21%	15%	11%	9%	6%	5%	4%	3%	2%	2%	2%	1%

Intensities in 180° C-plane

0°	2°	4°	6°	8°	10°	12°	14°	16°	18°	20°	22°	24°	26°	28°	30°	32°	34°	36°	38°
4750	4577	4218	3698	3078	2425	1827	1336	970	711	529	398	304	237	185	147	118	99	82	68
100%	96%	89%	78%	65%	51%	38%	28%	20%	15%	11%	8%	6%	5%	4%	3%	2%	2%	2%	1%

Intensities in 270° C-plane

0°	2°	4°	6°	8°	10°	12°	14°	16°	18°	20°	22°	24°	26°	28°	30°	32°	34°	36°	38°
4750	4577	4218	3698	3078	2425	1827	1336	970	711	529	398	304	237	185	147	118	99	82	68
100%	96%	89%	78%	65%	51%	38%	28%	20%	15%	11%	8%	6%	5%	4%	3%	2%	2%	2%	1%

Beam Angle 50%	Field Angle 10%	Cutoff Angle 2,5%	Intensity Ratio in 120° Cone	Intensity Ratio in 90° Cone
20.3°	41.6°	63.5°	98.7%	95.4%