

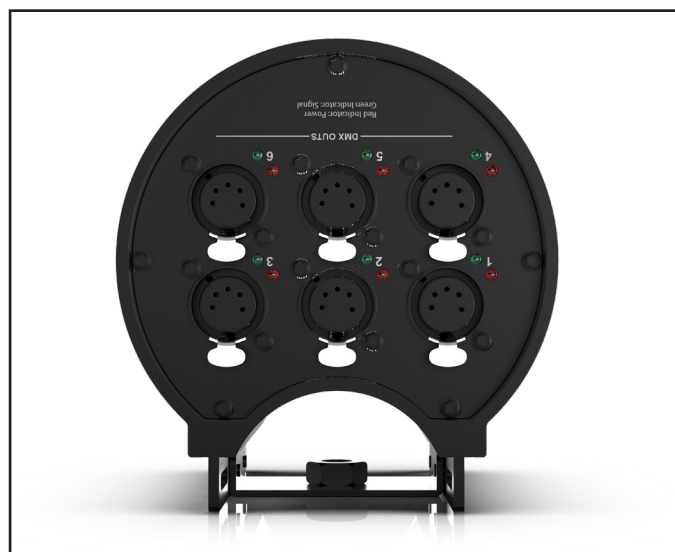
# PRELIMINARY DATA ONLY



## DATA DISTRO 6

The ADJ Lighting Data Distro 6 is a 6-way DMX and RDM data splitter. With one (1) 5-pin input, one (1) 5-pin thru and six (6) 5-pin outputs, the Data Distro 6 makes running DMX cables easier and more efficient.

The ADJ Lighting Data Distro 6 is a versatile and compact solution for streamlined DMX512 and RDM signal distribution. Designed for seamless integration into your lighting setup, this data splitter ensures reliable and convenient hanging with 1 Truss Mount featuring two Velcro Straps or M10 Screw Clamp (clamp not included). Its robust physical configuration includes 1x indoor 5-pin XLR input, 1x indoor 5-pin XLR thru, and 6x indoor 5-pin XLR outputs. Equipped with a Link Out Termination Switch and a DMX/RDM Protocol Switch, it also features an indoor locking power socket for added security.



## PROTOCOLS:

- DMX512
- RDM

## PHYSICAL:

- 180 degree mounting bracket system

## DIMENSIONS / WEIGHT:

- Length: 4.73" (120mm)
- Width: 5.43" (137.75mm)
- Height: 5.10" (129.55mm)
- Weight: 1.83lbs. (0.83kg)

## ELECTRICAL:

- AC Input: 100-230V 50/60Hz
- Power Consumption: 2.7W @ 120V and 2.9W @ 230V
- Power Input Protection: Fuse, T1.25A/250 (5.2x20mm)

## THERMAL:

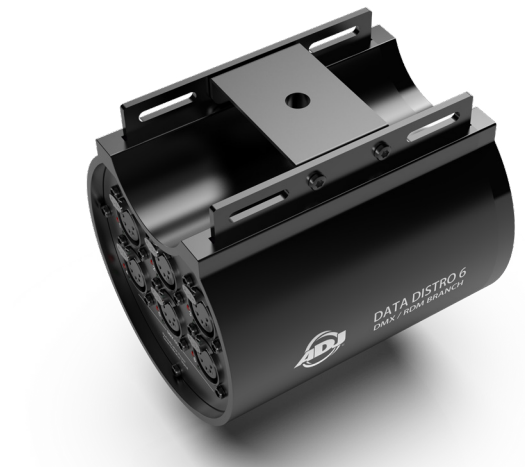
- Ambient Operational Temperature: -4°F to 113°F  
(-20°C to 45°C)
- Humidity: <75%
- Storage Temperature: 77°F (25°C)

## WHAT'S INCLUDED:

- 2x Straps (used to attach unit to truss)
- 1x Clamp Mounting Bracket
- 1x Power Cord

## APPROVALS / RATINGS:

- CE
- cETLus (Pending)
- FCC
- IP20



## TRUSS HANGING OPTIONS:

