

Hydro Beam X12



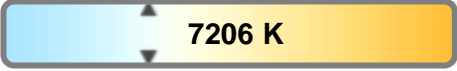
Light Efficiency:



Light Quality:



Color Temperature:



Output: 10720 lm

Peak: 195791 cd

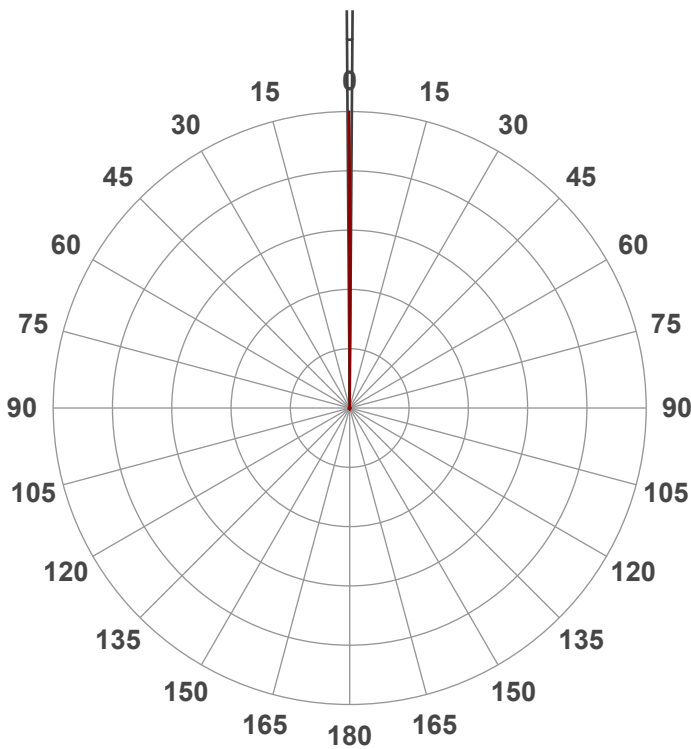
Power: 398.1 W

PF: 1.0



Beam Angle

.8°



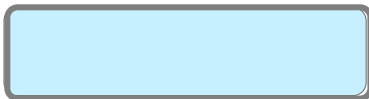
Test:

Beam

Date:

7/21/2022

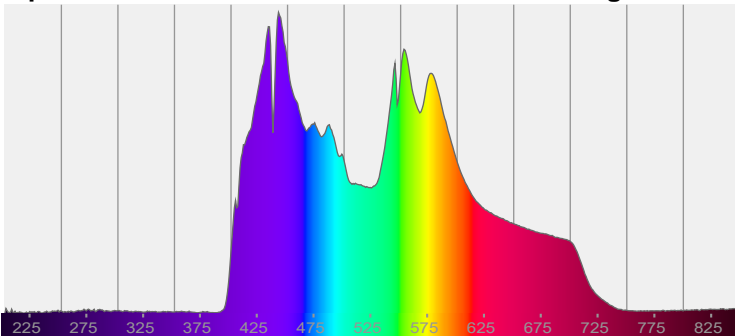
Note:



CIE 1931
x: 0.304
y: 0.314

Spectra

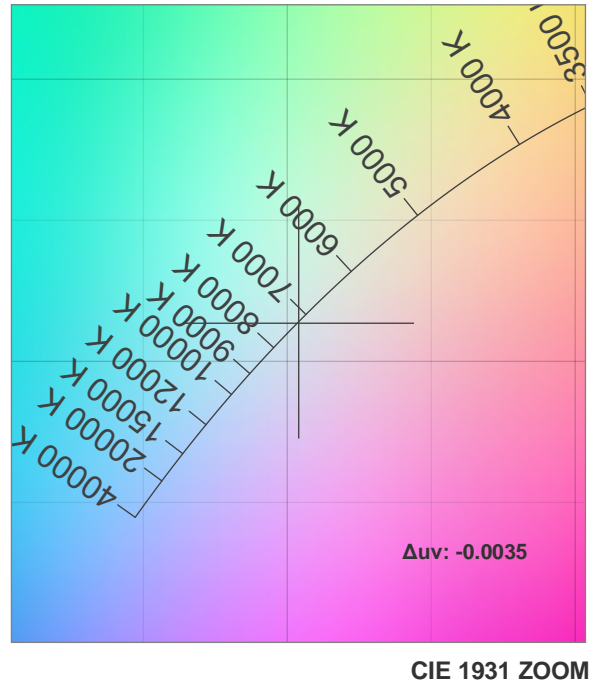
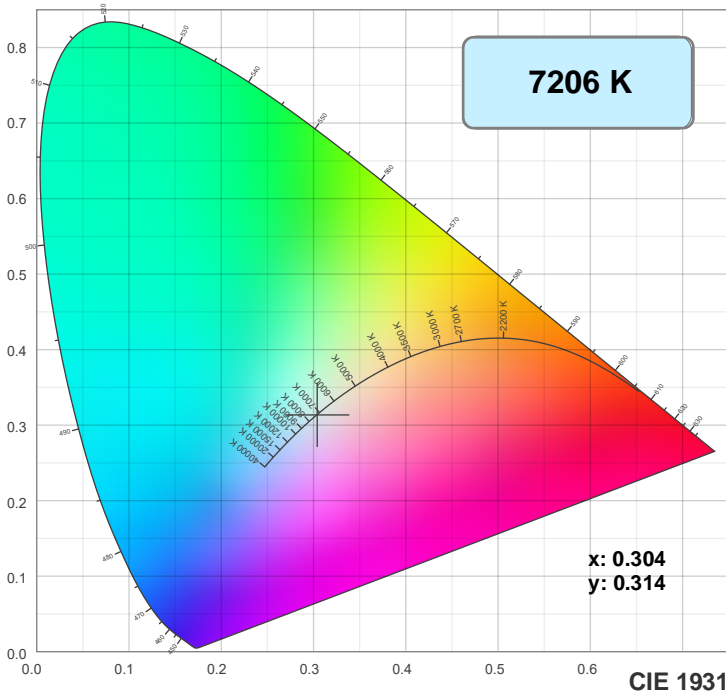
Dominant Wavelength: 460nm



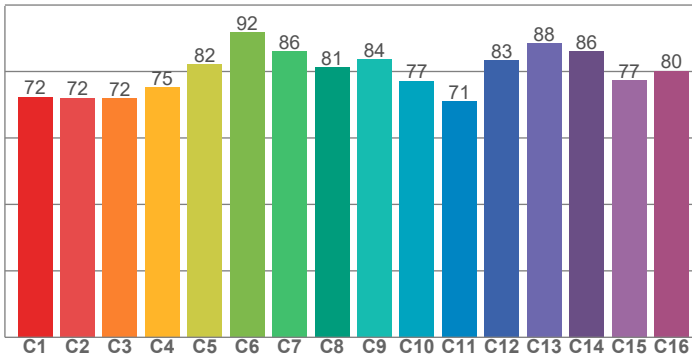
Power

Voltage: 117 V
Current: 3.39 A
Frequency: 0 Hz

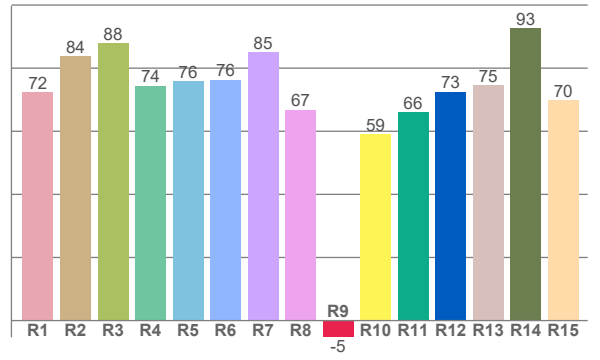
Color Details



TM30: 80.0



CRI: 77.8 (R1-R8)



CRI R values, only R1-R8 are used to calculate final CRI value

R1	R2	R3	R4	R5	R6	R7	R8	R9	R10	R11	R12	R13	R14	R15
72.5	83.7	88.0	74.4	75.9	76.4	85.1	66.8	-5.3	59.1	66.0	72.5	74.7	92.7	69.8

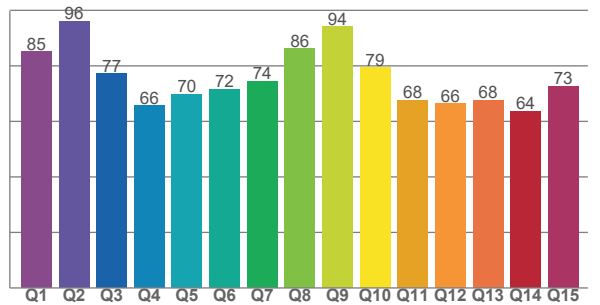
TM30 C values, 16 binned values out of total of 99 C values

C1	C2	C3	C4	C5	C6	C7	C8	C9	C10	C11	C12	C13	C14	C15	C16
72.3	72.0	71.9	75.3	82.1	91.8	86.1	81.2	83.6	77.1	71.0	83.3	88.5	86.1	77.3	80.2

CQS Q values

Q1	Q2	Q3	Q4	Q5	Q6	Q7	Q8	Q9	Q10	Q11	Q12	Q13	Q14	Q15
85.2	96.2	77.2	65.6	69.9	71.7	74.5	86.1	94.1	79.3	67.6	66.4	67.7	63.8	72.7

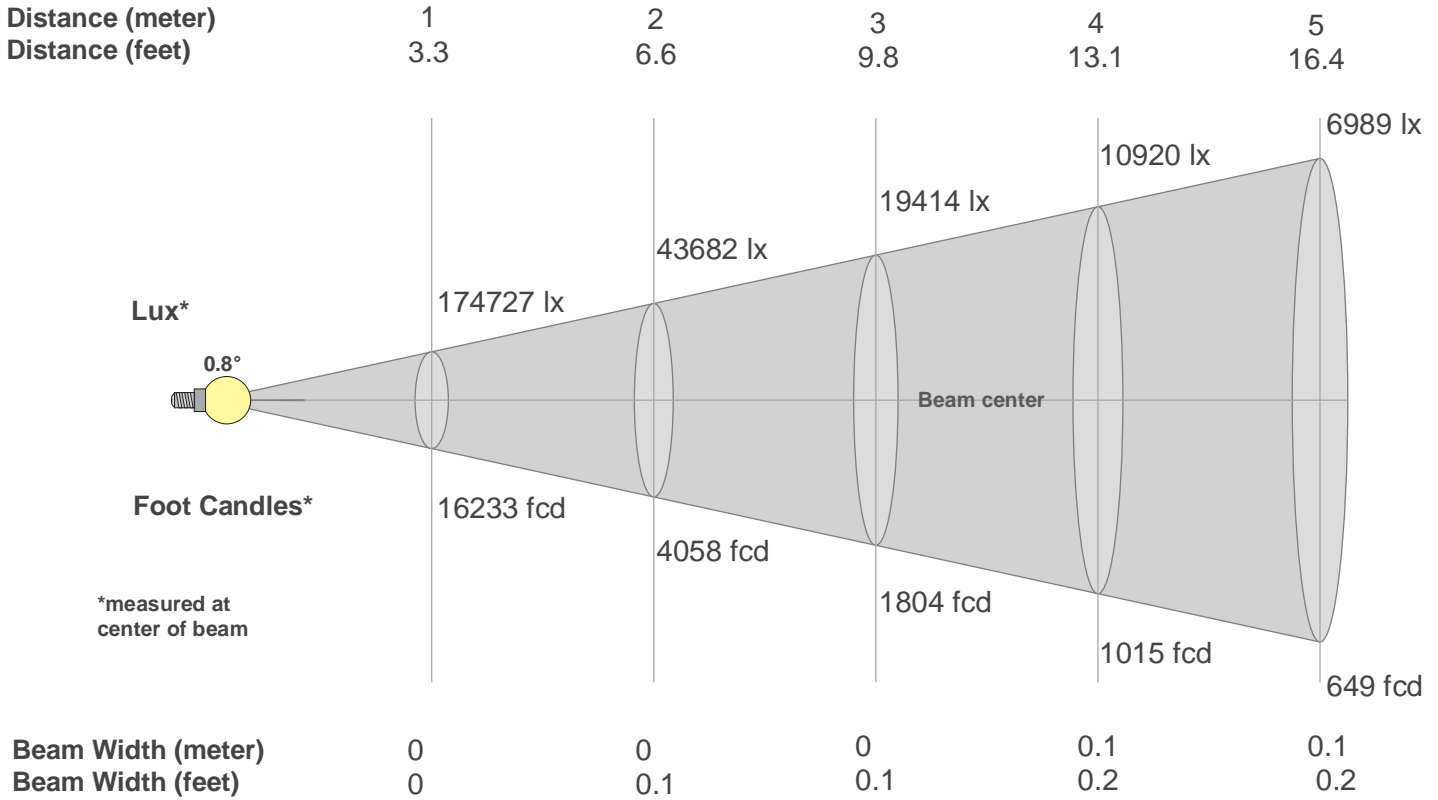
CQS: 73.9



Color Parameters

Color Temperature	Color Rendering Index	Red Component	Color Fidelity	Color Gamut	Color Quality Scale	Color Coordinate CIE 1931	Color Coordinate CIE 1931	Color Coordinate	Color Coordinate	Color Deviation from Black Body
CCT	CRI	CRI R9	TM30 Rf	TM30 Rg	CQS	x	y	u	v	Δuv
7206 K	77.8	-5.3	80.0	92.3	73.9	0.304	0.314	0.198	0.306	-0.0035

Beam Details



Beam Intensities from 1-20m

m	1	2	3	4	5	6	7	8	9	10	11	12	13	14	15	16	17	18	19	20
ft	3.3	6.6	9.8	13.1	16.4	19.7	23	26.2	29.5	32.8	36.1	39.4	42.7	45.9	49.2	52.5	55.8	59.1	62.3	65.6
lx	174727	43682	19414	10920	6989	4854	3566	2730	2157	1747	1444	1213	1034	891	777	683	605	539	484	437
fcd	16232.7	4058.2	1803.6	1014.5	649.3	450.9	331.3	253.6	200.4	162.3	134.2	112.7	96.1	82.8	72.1	63.4	56.2	50.1	45	40.6

Intensities in 0° C-plane

0°	1°	2°	3°	4°	5°	6°	7°	8°	9°	10°	11°	12°	13°	14°	15°	16°	17°	18°	19°	
175K	10K	1K	1K	1K	1K	1K	1K	1K	1K	1K	1K	1K	1K	1K	1K	1K	1K	1K	1K	1K
100%	5%	0%	0%	0%	0%	0%	0%	0%	0%	0%	0%	0%	0%	0%	0%	0%	0%	0%	0%	0%

Intensities in 90° C-plane

0°	1°	2°	3°	4°	5°	6°	7°	8°	9°	10°	11°	12°	13°	14°	15°	16°	17°	18°	19°	
175K	10K	1K	1K	1K	1K	1K	1K	1K	1K	1K	1K	1K	1K	1K	1K	1K	1K	1K	1K	1K
100%	5%	0%	0%	0%	0%	0%	0%	0%	0%	0%	0%	0%	0%	0%	0%	0%	0%	0%	0%	0%

Intensities in 180° C-plane

0°	1°	2°	3°	4°	5°	6°	7°	8°	9°	10°	11°	12°	13°	14°	15°	16°	17°	18°	19°	
175K	9K	1K	1K	1K	1K	1K	1K	1K	1K	1K	1K	1K	1K	1K	1K	1K	1K	1K	1K	1K
100%	5%	0%	0%	0%	0%	0%	0%	0%	0%	0%	0%	0%	0%	0%	0%	0%	0%	0%	0%	0%

Intensities in 270° C-plane

0°	1°	2°	3°	4°	5°	6°	7°	8°	9°	10°	11°	12°	13°	14°	15°	16°	17°	18°	19°	
175K	9K	1K	1K	1K	1K	1K	1K	1K	1K	1K	1K	1K	1K	1K	1K	1K	1K	1K	1K	1K
100%	5%	0%	0%	0%	0%	0%	0%	0%	0%	0%	0%	0%	0%	0%	0%	0%	0%	0%	0%	0%

Beam Angle 50%	Field Angle 10%	Cutoff Angle 2,5%	Intensity Ratio in 120° Cone	Intensity Ratio in 90° Cone
0.8°	1.7°	2.3°	25.3%	15.0%