

# Hydro Profile



Light Efficiency:

8 Lumen/Watt

Light Quality:

CRI: 88.4

Color Temperature:

7150 K

Output: 6848 lm

Peak: 900272 cd

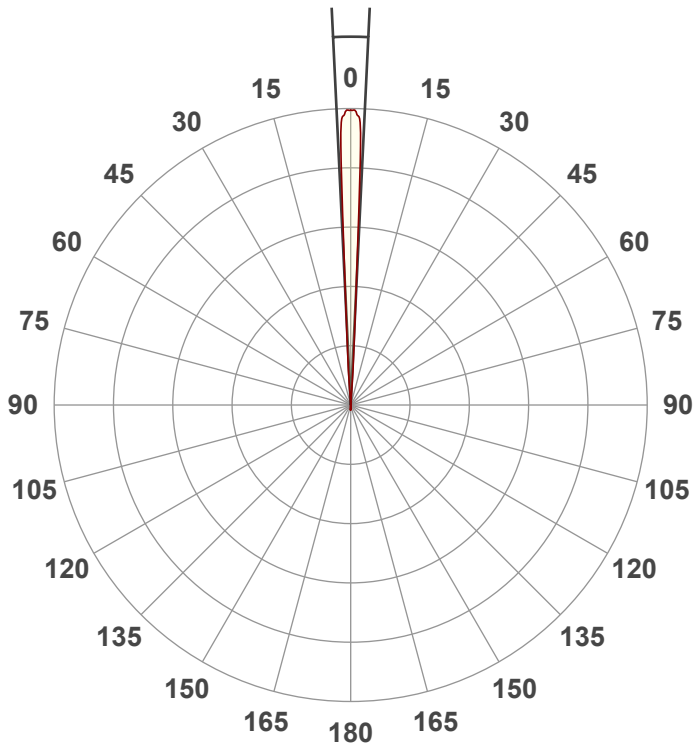
Power: 856 W

PF: 1.0



Beam Angle

5.5°



Test:

Zoom In High CRI

Date:

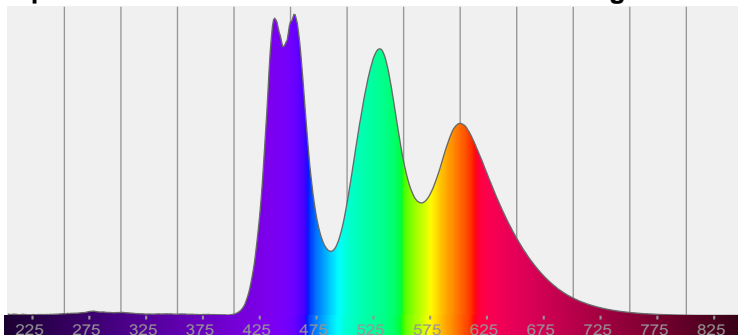
7/19/2022

Note:

CIE 1931  
x: 0.304  
y: 0.317

Spectra

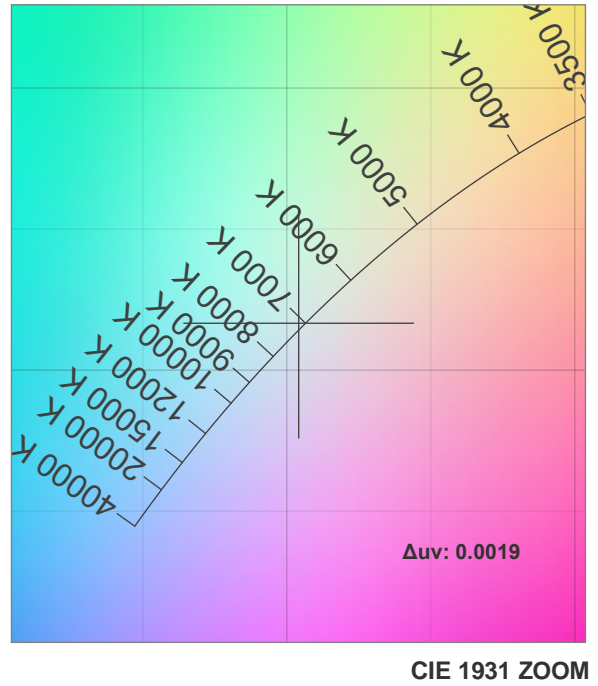
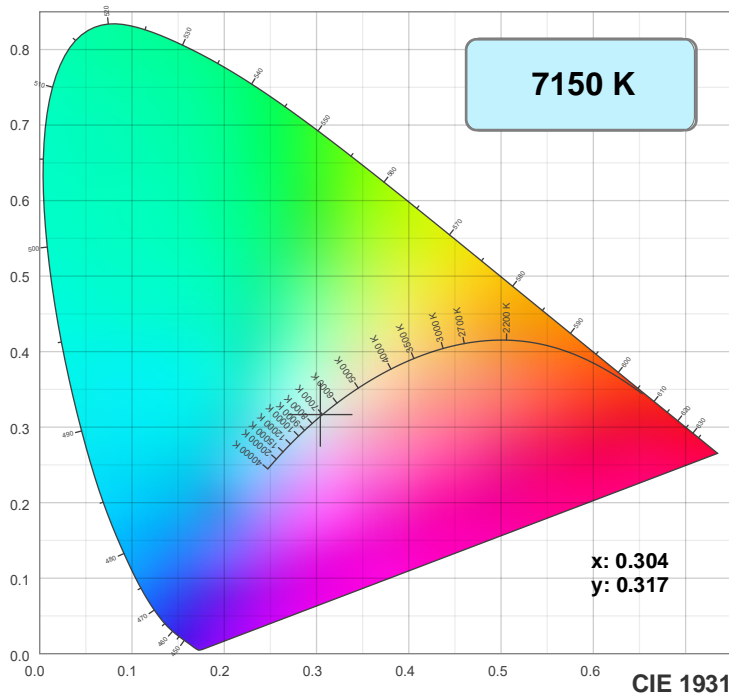
Dominant Wavelength: 470nm



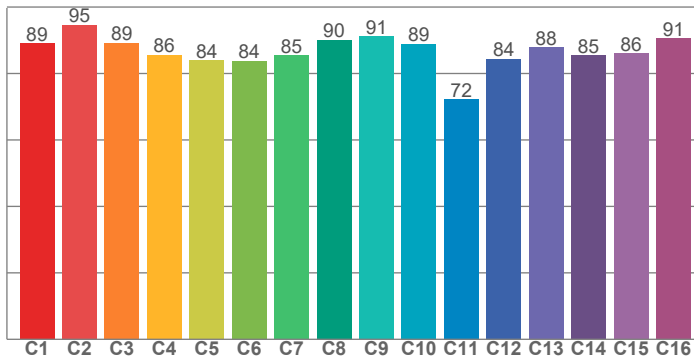
Power

Voltage: 118 V  
Current: 7.27 A  
Frequency: 0 Hz

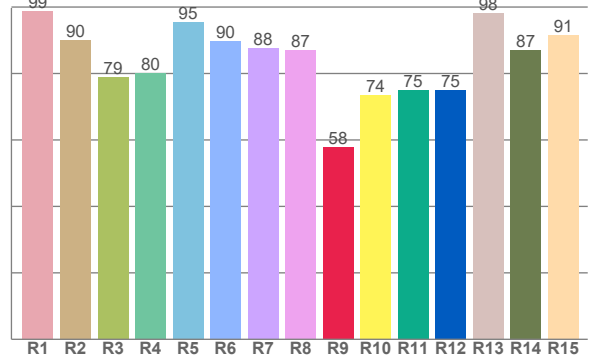
## Color Details



TM30: 86.9



CRI: 88.4 (R1-R8)



CRI R values, only R1-R8 are used to calculate final CRI value

R1	R2	R3	R4	R5	R6	R7	R8	R9	R10	R11	R12	R13	R14	R15
98.8	90.1	78.8	80.0	95.5	89.8	87.6	86.9	57.7	73.5	74.8	75.1	98.1	87.1	91.4

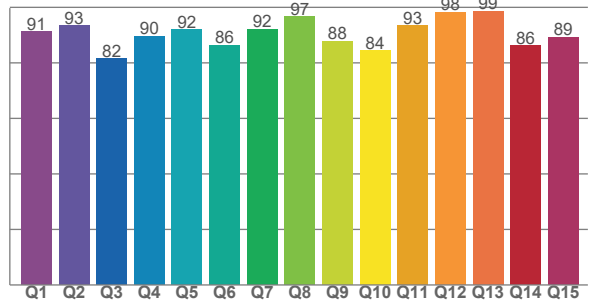
TM30 C values, 16 binned values out of total of 99 C values

C1	C2	C3	C4	C5	C6	C7	C8	C9	C10	C11	C12	C13	C14	C15	C16
89.0	94.7	89.2	85.5	83.9	83.8	85.4	90.0	91.2	88.9	72.2	84.4	87.8	85.4	86.0	90.5

CQS Q values

Q1	Q2	Q3	Q4	Q5	Q6	Q7	Q8	Q9	Q10	Q11	Q12	Q13	Q14	Q15
91.1	93.4	81.5	89.6	91.9	86.3	92.1	96.7	87.8	84.5	93.5	98.3	98.7	86.3	89.3

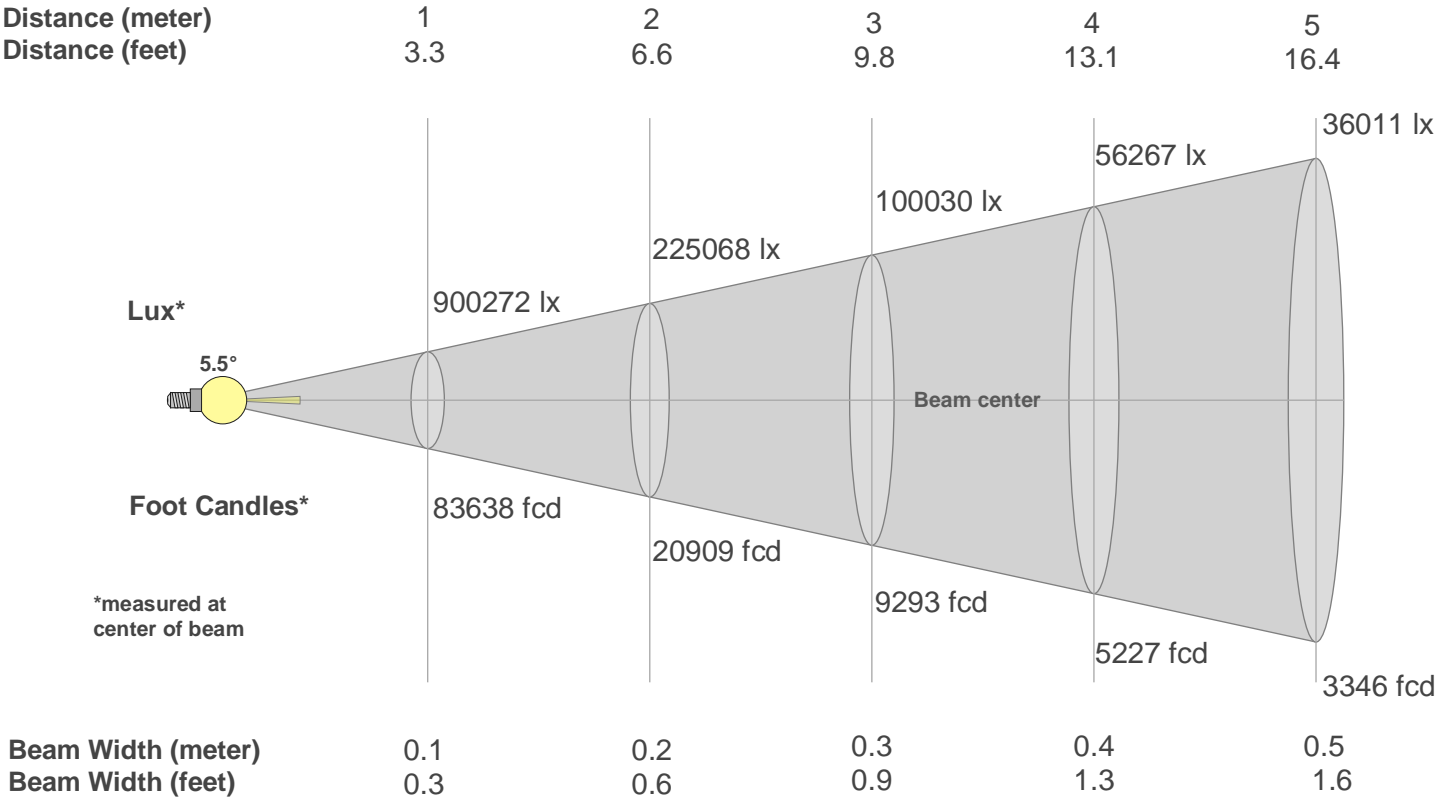
CQS: 89.6



## Color Parameters

Color Temperature	Color Rendering Index	Red Component	Color Fidelity	Color Gamut	Color Quality Scale	Color Coordinate CIE 1931	Color Coordinate CIE 1931	Color Coordinate	Color Coordinate	Color Deviation from Black Body
CCT	CRI	CRI R9	TM30 Rf	TM30 Rg	CQS	x	y	u	v	Δuv
7150 K	88.4	57.7	86.9	105.4	89.6	0.304	0.317	0.196	0.307	0.0019

Beam Details



Lux\*

5.5°

Foot Candles\*

\*measured at center of beam

900272 lx

225068 lx

100030 lx

56267 lx

36011 lx

83638 fcd

20909 fcd

9293 fcd

5227 fcd

3346 fcd

Beam center

Beam Width (meter)

Beam Width (feet)

0.1

0.3

0.2

0.6

0.3

0.9

0.4

1.3

0.5

1.6

Beam Intensities from 1-20m																				
m	1	2	3	4	5	6	7	8	9	10	11	12	13	14	15	16	17	18	19	20
ft	3.3	6.6	9.8	13.1	16.4	19.7	23	26.2	29.5	32.8	36.1	39.4	42.7	45.9	49.2	52.5	55.8	59.1	62.3	65.6
lx	900272	225068	100030	56267	36011	25008	18373	14067	11114	9003	7440	6252	5327	4593	4001	3517	3115	2779	2494	2251
fcd	83638	20909.5	9293.1	5227.4	3345.5	2323.3	1706.9	1306.8	1032.6	836.4	691.2	580.8	494.9	426.7	371.7	326.7	289.4	258.1	231.7	209.1

Intensities in 0° C-plane																			
0°	1°	2°	3°	4°	5°	6°	7°	8°	9°	10°	11°	12°	13°	14°	15°	16°	17°	18°	19°
900K	892K	810K	295K	33K	0K	0K	0K	0K	0K	0K	0K	0K	0K	0K	0K	0K	0K	0K	0K
100%	99%	90%	33%	4%	0%	0%	0%	0%	0%	0%	0%	0%	0%	0%	0%	0%	0%	0%	0%

Intensities in 90° C-plane																			
0°	1°	2°	3°	4°	5°	6°	7°	8°	9°	10°	11°	12°	13°	14°	15°	16°	17°	18°	19°
900K	892K	810K	295K	33K	0K	0K	0K	0K	0K	0K	0K	0K	0K	0K	0K	0K	0K	0K	0K
100%	99%	90%	33%	4%	0%	0%	0%	0%	0%	0%	0%	0%	0%	0%	0%	0%	0%	0%	0%

Intensities in 180° C-plane																				
0°	1°	2°	3°	4°	5°	6°	7°	8°	9°	10°	11°	12°	13°	14°	15°	16°	17°	18°	19°	
900K	892K	810K	295K	33K	0K	0K	0K	0K	0K	0K	0K	0K	0K	0K	0K	0K	0K	0K	0K	
100%	99%	90%	33%	4%	0%	0%	0%	0%	0%	0%	0%	0%	0%	0%	0%	0%	0%	0%	0%	

Intensities in 270° C-plane																			
0°	1°	2°	3°	4°	5°	6°	7°	8°	9°	10°	11°	12°	13°	14°	15°	16°	17°	18°	19°
900K	892K	810K	295K	33K	0K	0K	0K	0K	0K	0K	0K	0K	0K	0K	0K	0K	0K	0K	0K
100%	99%	90%	33%	4%	0%	0%	0%	0%	0%	0%	0%	0%	0%	0%	0%	0%	0%	0%	0%

Beam Angle 50%	Field Angle 10%	Cutoff Angle 2,5%	Intensity Ratio in 120° Cone	Intensity Ratio in 90° Cone
5.5°	7.4°	8.1°	100.0%	100.0%