

Hydro Spot 2



Light Efficiency:

23 Lumen/Watt

Light Quality:

CRI: 70.1

Color Temperature:

6182 K

Output: 10344 lm

Peak: 893964 cd

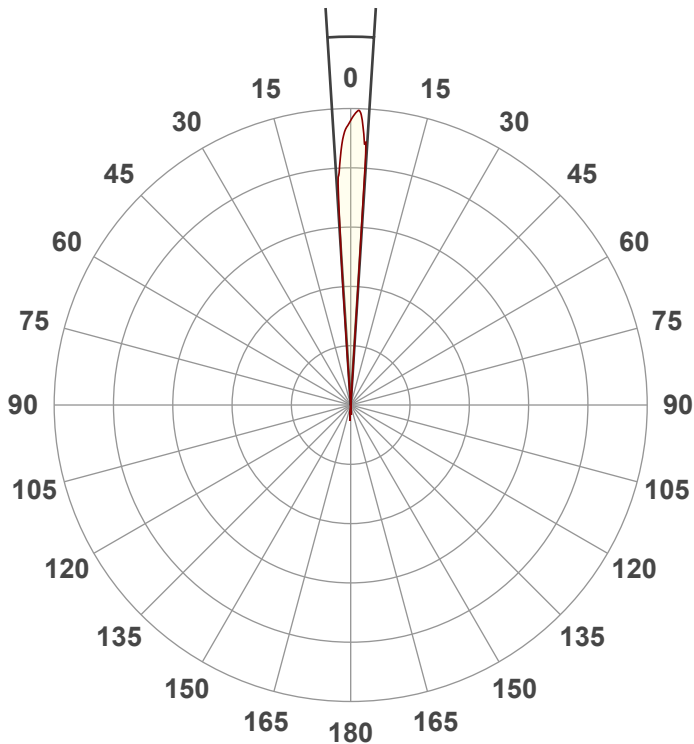
Power: 450 W

PF: 1.0



Beam Angle

7.2°



Test:

Zoom In

Date:

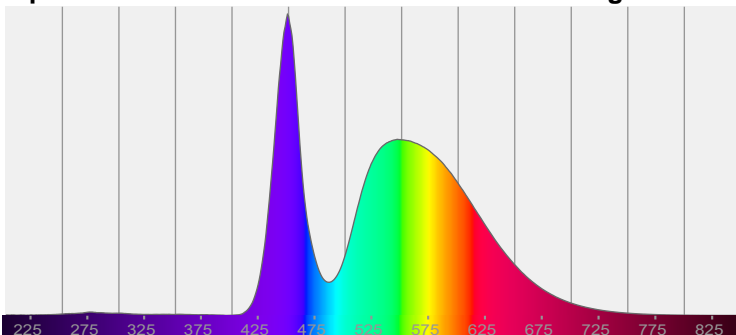
10/5/2022

Note:

CIE 1931
x: 0.318
y: 0.340

Spectra

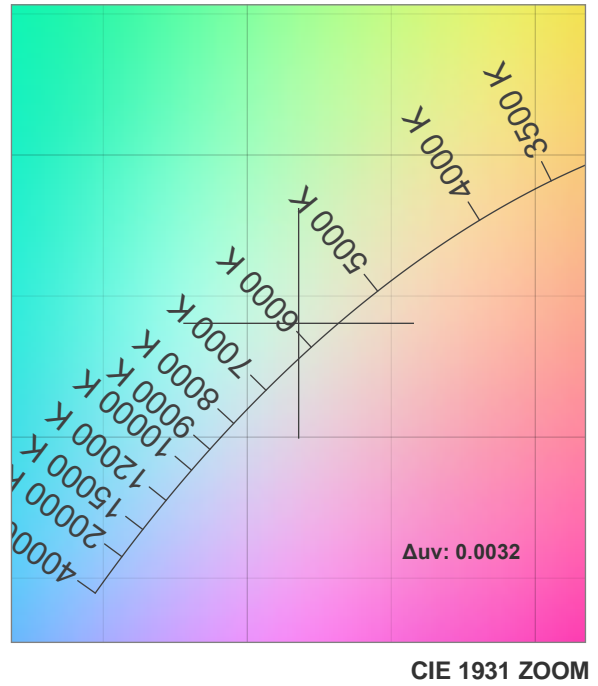
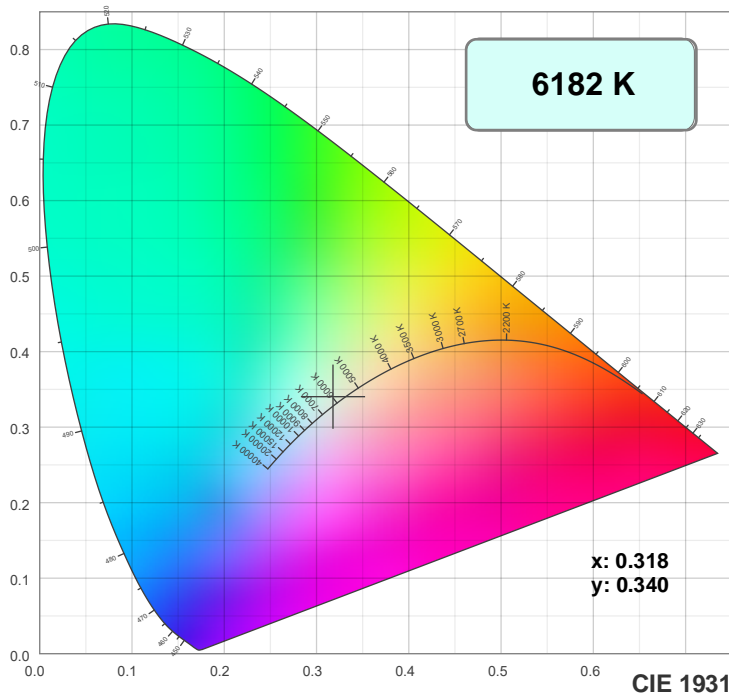
Dominant Wavelength: 567nm



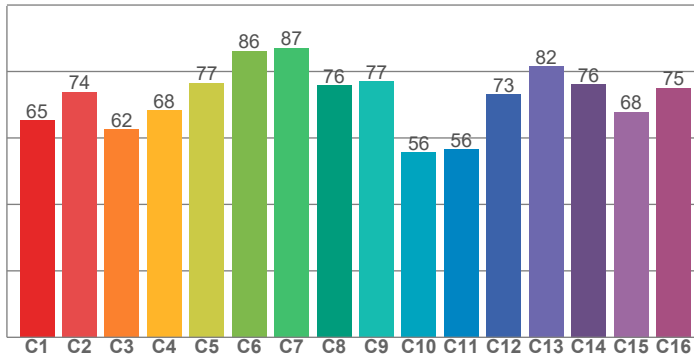
Power

Voltage: 119 V
Current: 3.78 A
Frequency: 0 Hz

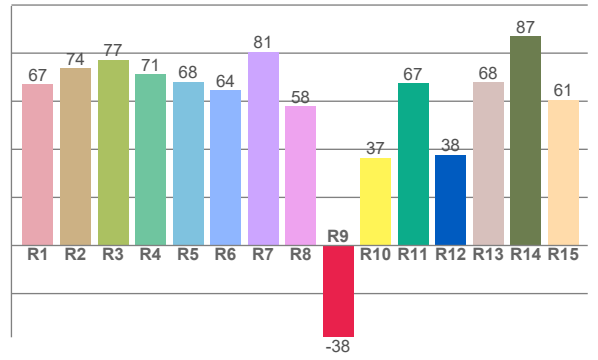
Color Details



TM30: 72.0



CRI: 70.1 (R1-R8)



CRI R values, only R1-R8 are used to calculate final CRI value

R1	R2	R3	R4	R5	R6	R7	R8	R9	R10	R11	R12	R13	R14	R15
67.1	73.7	77.2	71.2	68.2	64.5	80.6	58.0	-38.2	36.5	67.5	37.8	67.9	87.1	60.7

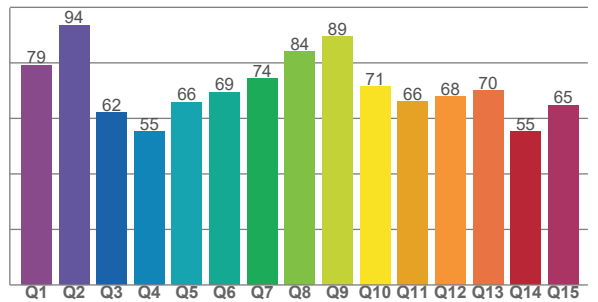
TM30 C values, 16 binned values out of total of 99 C values

C1	C2	C3	C4	C5	C6	C7	C8	C9	C10	C11	C12	C13	C14	C15	C16
65.2	73.8	62.5	68.3	76.6	86.2	87.0	75.8	77.0	55.6	56.5	73.1	81.5	76.2	67.8	75.1

CQS Q values

Q1	Q2	Q3	Q4	Q5	Q6	Q7	Q8	Q9	Q10	Q11	Q12	Q13	Q14	Q15
79.1	93.5	62.0	55.2	65.9	69.5	74.2	84.1	89.4	71.4	66.0	67.8	70.1	55.2	64.8

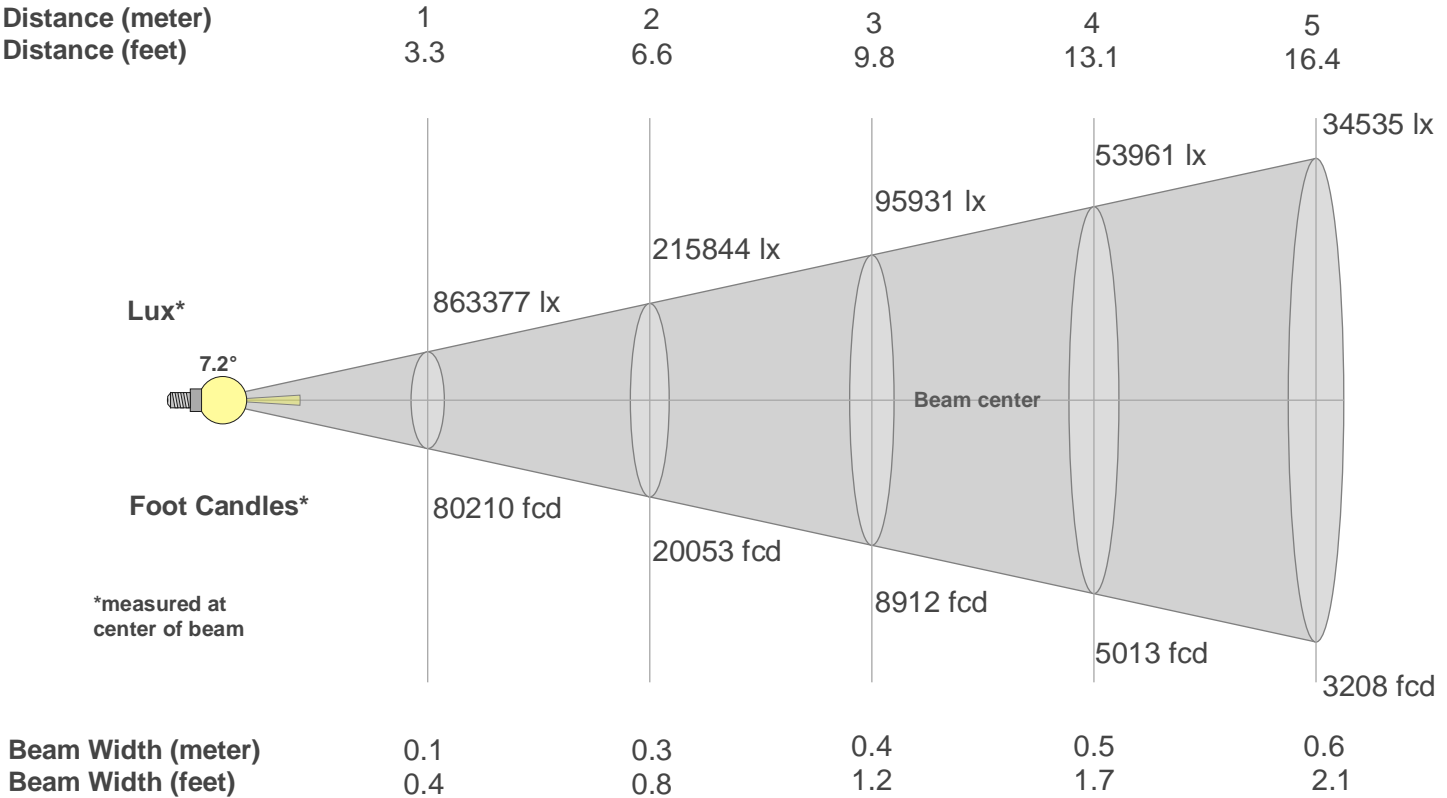
CQS: 69.2



Color Parameters

Color Temperature	Color Rendering Index	Red Component	Color Fidelity	Color Gamut	Color Quality Scale	Color Coordinate CIE 1931	Color Coordinate CIE 1931	Color Coordinate	Color Coordinate	Color Deviation from Black Body
CCT	CRI	CRI R9	TM30 Rf	TM30 Rg	CQS	x	y	u	v	Δuv
6182 K	70.1	-38.2	72.0	92.4	69.2	0.318	0.340	0.197	0.317	0.0032

Beam Details



Lux*

7.2°

Foot Candles*

*measured at center of beam

863377 lx

215844 lx

95931 lx

53961 lx

34535 lx

80210 fcd

20053 fcd

8912 fcd

5013 fcd

3208 fcd

Beam center

Beam Width (meter)

Beam Width (feet)

0.1

0.4

0.3

0.8

0.4

1.2

0.5

1.7

0.6

2.1

Beam Intensities from 1-20m																				
m	1	2	3	4	5	6	7	8	9	10	11	12	13	14	15	16	17	18	19	20
ft	3.3	6.6	9.8	13.1	16.4	19.7	23	26.2	29.5	32.8	36.1	39.4	42.7	45.9	49.2	52.5	55.8	59.1	62.3	65.6
lx	863377	215844	95931	53961	34535	23983	17620	13490	10659	8634	7135	5996	5109	4405	3837	3373	2987	2665	2392	2158
fcd	80210.3	20052.6	8912.3	5013.1	3208.4	2228.1	1636.9	1253.3	990.3	802.1	662.9	557	474.6	409.2	356.5	313.3	277.5	247.6	222.2	200.5

Intensities in 0° C-plane																			
0°	1°	2°	3°	4°	5°	6°	7°	8°	9°	10°	11°	12°	13°	14°	15°	16°	17°	18°	19°
863K	839K	786K	689K	161K	0K	0K	0K	0K	0K	0K	0K	0K	0K	0K	0K	0K	0K	0K	0K
100%	97%	91%	80%	19%	0%	0%	0%	0%	0%	0%	0%	0%	0%	0%	0%	0%	0%	0%	0%

Intensities in 90° C-plane																			
0°	1°	2°	3°	4°	5°	6°	7°	8°	9°	10°	11°	12°	13°	14°	15°	16°	17°	18°	19°
863K	839K	786K	689K	161K	0K	0K	0K	0K	0K	0K	0K	0K	0K	0K	0K	0K	0K	0K	0K
100%	97%	91%	80%	19%	0%	0%	0%	0%	0%	0%	0%	0%	0%	0%	0%	0%	0%	0%	0%

Intensities in 180° C-plane																			
0°	1°	2°	3°	4°	5°	6°	7°	8°	9°	10°	11°	12°	13°	14°	15°	16°	17°	18°	19°
863K	886K	883K	795K	15K	0K	0K	0K	0K	0K	0K	0K	0K	0K	0K	0K	0K	0K	0K	0K
100%	103%	102%	92%	2%	0%	0%	0%	0%	0%	0%	0%	0%	0%	0%	0%	0%	0%	0%	0%

Intensities in 270° C-plane																			
0°	1°	2°	3°	4°	5°	6°	7°	8°	9°	10°	11°	12°	13°	14°	15°	16°	17°	18°	19°
863K	886K	883K	795K	15K	0K	0K	0K	0K	0K	0K	0K	0K	0K	0K	0K	0K	0K	0K	0K
100%	103%	102%	92%	2%	0%	0%	0%	0%	0%	0%	0%	0%	0%	0%	0%	0%	0%	0%	0%

Beam Angle 50%	Field Angle 10%	Cutoff Angle 2,5%	Intensity Ratio in 120° Cone	Intensity Ratio in 90° Cone
7.2°	7.9°	8.1°	100.0%	100.0%