

Encore Profile Pro WW



Light Efficiency:

40 Lumen/Watt

Light Quality:

CRI: 95.8

Color Temperature:

3220 K

Output: 11240 lm

Peak: 310031 cd

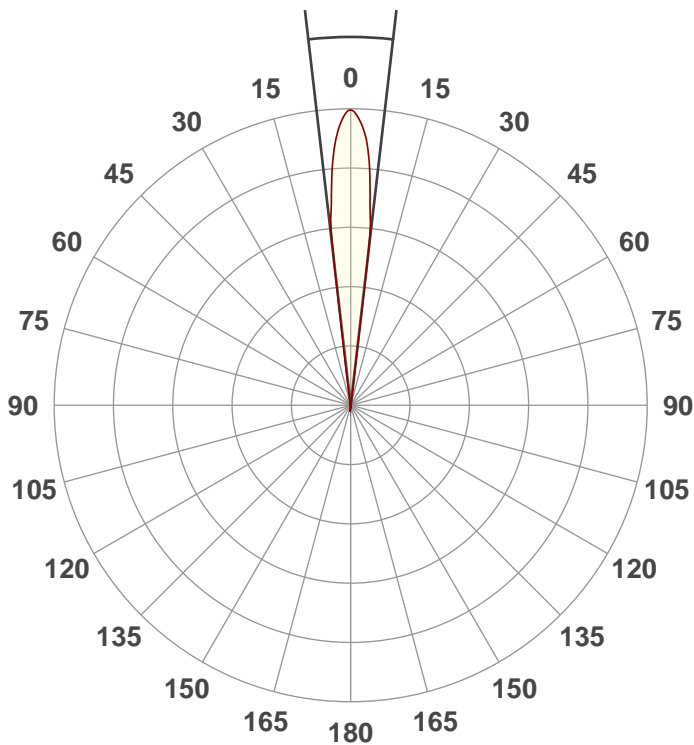
Power: 281.3 W

PF: 0.99



Beam Angle

13.2°



Test:

14Deg

Date:

2/8/2021

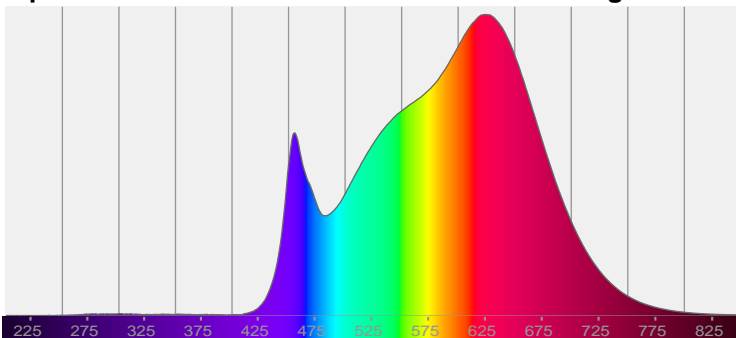
Note:



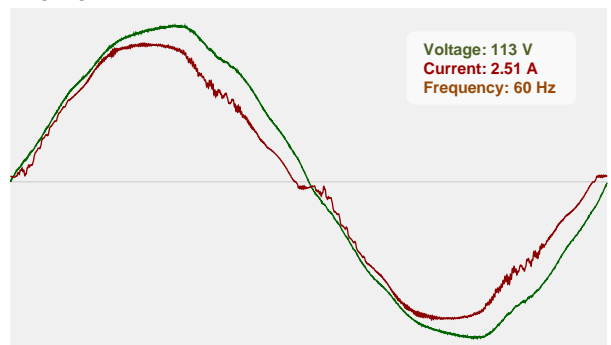
CIE 1931
x: 0.421
y: 0.396

Spectra

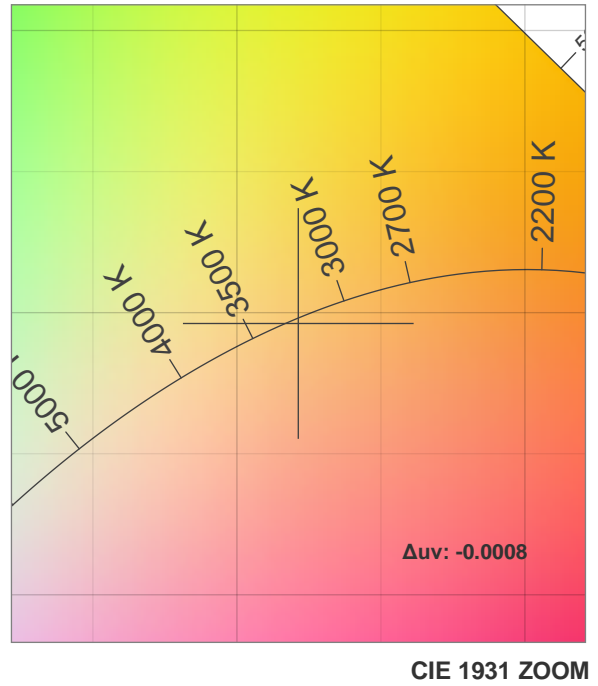
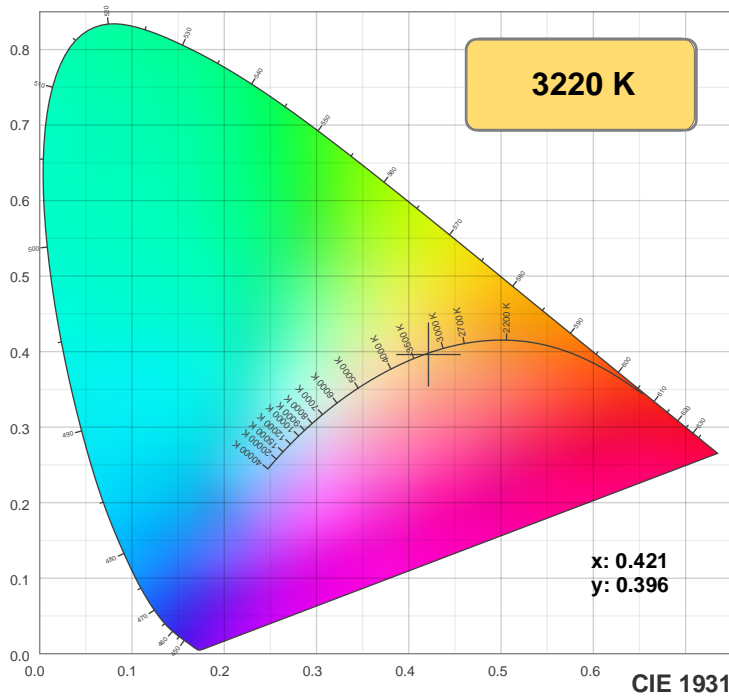
Dominant Wavelength: 583nm



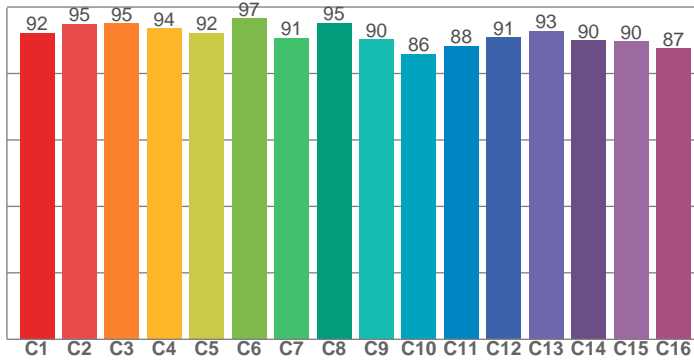
Power



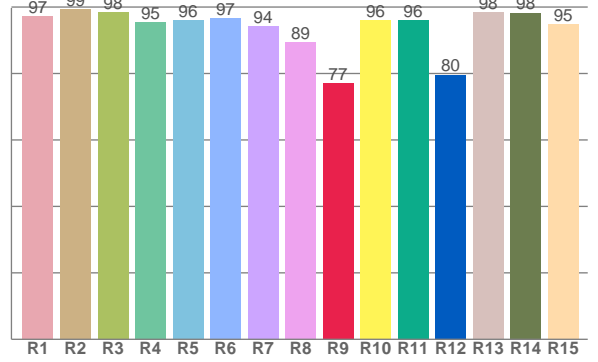
Color Details



TM30: 91.7



CRI: 95.8 (R1-R8)



CRI R values, only R1-R8 are used to calculate final CRI value

R1	R2	R3	R4	R5	R6	R7	R8	R9	R10	R11	R12	R13	R14	R15
97.3	99.3	98.5	95.4	95.9	96.7	94.2	89.5	77.0	95.9	96.1	79.6	98.3	98.3	94.8

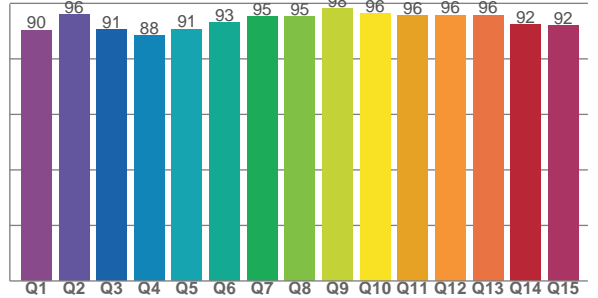
TM30 C values, 16 binned values out of total of 99 C values

C1	C2	C3	C4	C5	C6	C7	C8	C9	C10	C11	C12	C13	C14	C15	C16
92.2	95.0	95.0	93.5	92.2	96.6	90.8	95.2	90.3	85.9	88.4	90.8	92.8	90.0	89.7	87.5

CQS Q values

Q1	Q2	Q3	Q4	Q5	Q6	Q7	Q8	Q9	Q10	Q11	Q12	Q13	Q14	Q15
90.4	96.0	90.5	88.3	90.7	93.0	95.2	95.3	98.1	96.3	95.5	95.7	95.7	92.3	91.9

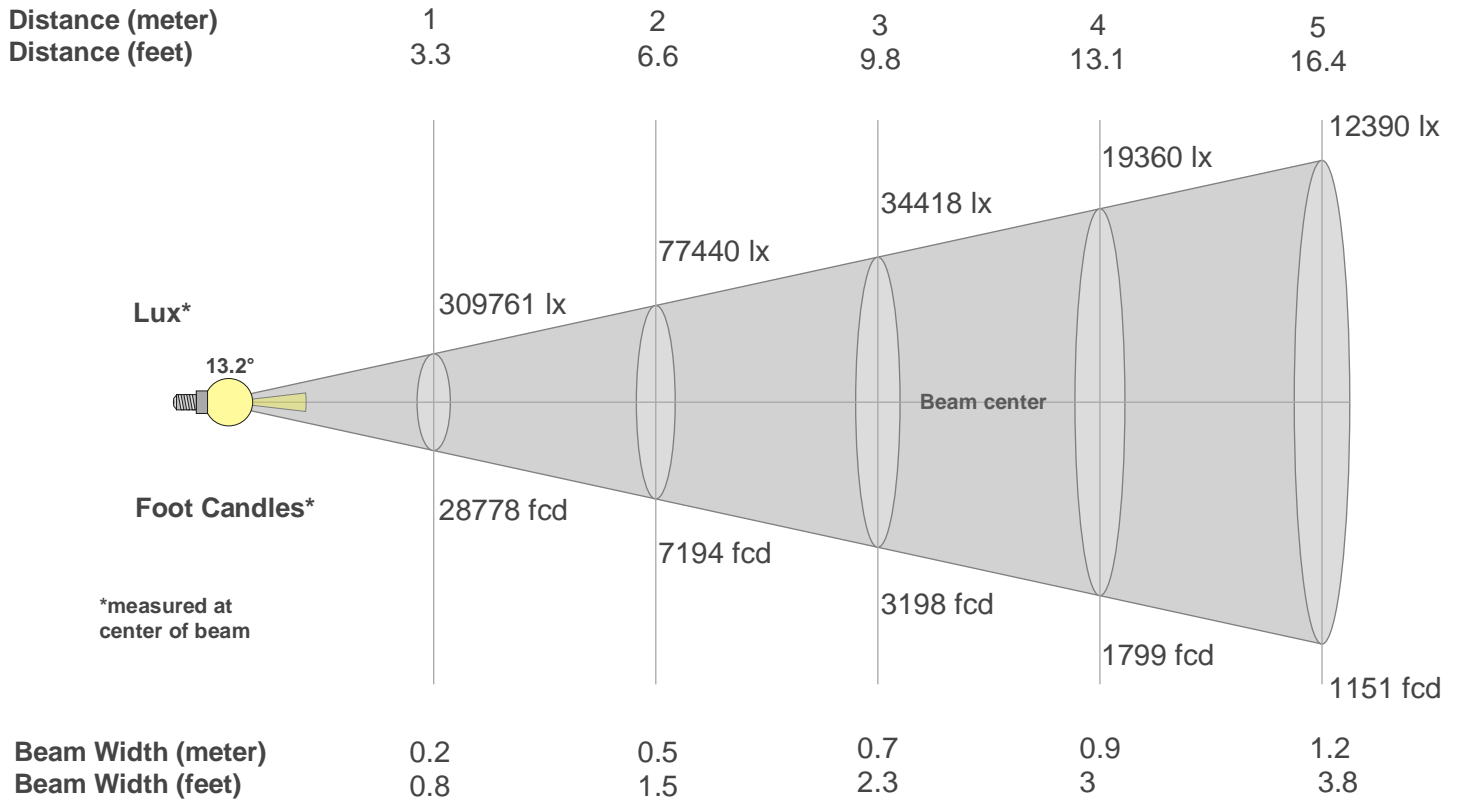
CQS: 93.0



Color Parameters

Color Temperature	Color Rendering Index	Red Component	Color Fidelity	Color Gamut	Color Quality Scale	Color Coordinate CIE 1931	Color Coordinate CIE 1931	Color Coordinate	Color Coordinate	Color Deviation from Black Body
CCT	CRI	CRI R9	TM30 Rf	TM30 Rg	CQS	x	y	u	v	Δuv
3220 K	95.8	77.0	91.7	98.4	93.0	0.421	0.396	0.244	0.344	-0.0008

Beam Details



Beam Intensities from 1-20m

m	1	2	3	4	5	6	7	8	9	10	11	12	13	14	15	16	17	18	19	20
ft	3.3	6.6	9.8	13.1	16.4	19.7	23	26.2	29.5	32.8	36.1	39.4	42.7	45.9	49.2	52.5	55.8	59.1	62.3	65.6
lx	30976 1	77440	34418	19360	12390	8604	6322	4840	3824	3098	2560	2151	1833	1580	1377	1210	1072	956	858	774
fcd	28777. 8	7194.4	3197.5	1798.6	1151.1	799.4	587.3	449.7	355.3	287.8	237.8	199.8	170.3	146.8	127.9	112.4	99.6	88.8	79.7	71.9

Intensities in 0° C-plane

0°	1°	2°	3°	4°	5°	6°	7°	8°	9°	10°	11°	12°	13°	14°	15°	16°	17°	18°	19°
310K	306K	297K	283K	262K	231K	193K	99K	15K	0K	0K	0K	0K	0K	0K	0K	0K	0K	0K	0K
100%	99%	96%	91%	84%	74%	62%	32%	5%	0%	0%	0%	0%	0%	0%	0%	0%	0%	0%	0%

Intensities in 90° C-plane

0°	1°	2°	3°	4°	5°	6°	7°	8°	9°	10°	11°	12°	13°	14°	15°	16°	17°	18°	19°
310K	306K	297K	283K	262K	231K	193K	99K	15K	0K	0K	0K	0K	0K	0K	0K	0K	0K	0K	0K
100%	99%	96%	91%	84%	74%	62%	32%	5%	0%	0%	0%	0%	0%	0%	0%	0%	0%	0%	0%

Intensities in 180° C-plane

0°	1°	2°	3°	4°	5°	6°	7°	8°	9°	10°	11°	12°	13°	14°	15°	16°	17°	18°	19°
310K	306K	298K	285K	265K	232K	191K	94K	6K	0K	0K	0K	0K	0K	0K	0K	0K	0K	0K	0K
100%	99%	96%	92%	85%	75%	62%	30%	2%	0%	0%	0%	0%	0%	0%	0%	0%	0%	0%	0%

Intensities in 270° C-plane

0°	1°	2°	3°	4°	5°	6°	7°	8°	9°	10°	11°	12°	13°	14°	15°	16°	17°	18°	19°
310K	306K	298K	285K	265K	232K	191K	94K	6K	0K	0K	0K	0K	0K	0K	0K	0K	0K	0K	0K
100%	99%	96%	92%	85%	75%	62%	30%	2%	0%	0%	0%	0%	0%	0%	0%	0%	0%	0%	0%

Beam Angle 50%	Field Angle 10%	Cutoff Angle 2,5%	Intensity Ratio in 120° Cone	Intensity Ratio in 90° Cone
13.2°	14.9°	16.1°	100.0%	99.9%