

Encore Profile Pro WW



Light Efficiency:

47 Lumen/Watt

Light Quality:

CRI: 96.6

Color Temperature:

3132 K

Output: 13248 lm

Peak: 232919 cd

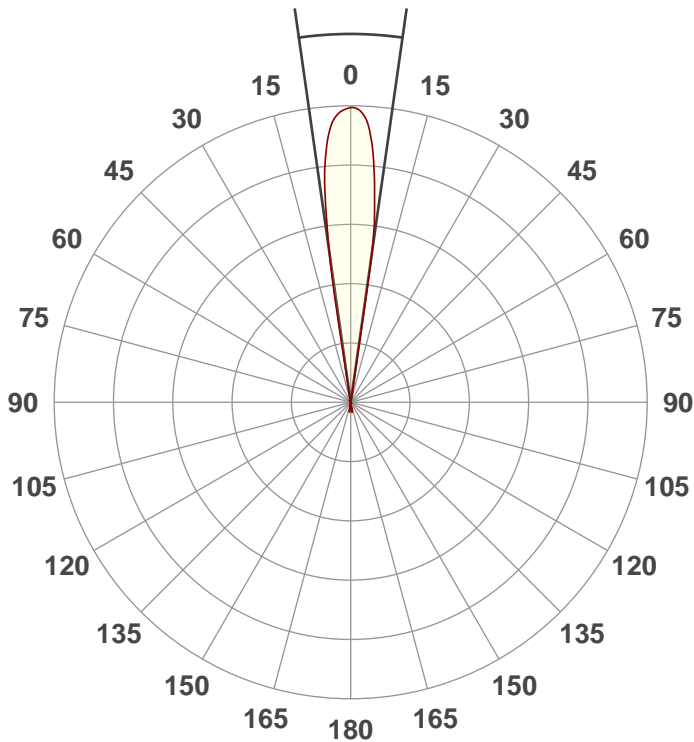
Power: 281.2 W

PF: 0.99



Beam Angle

16.2°



Test:

19Deg

Date:

2/8/2021

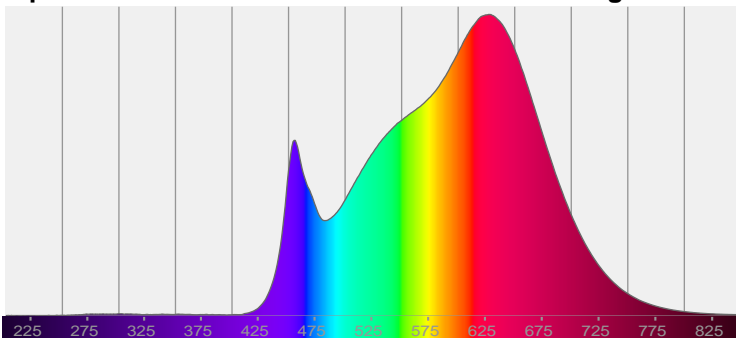
Note:



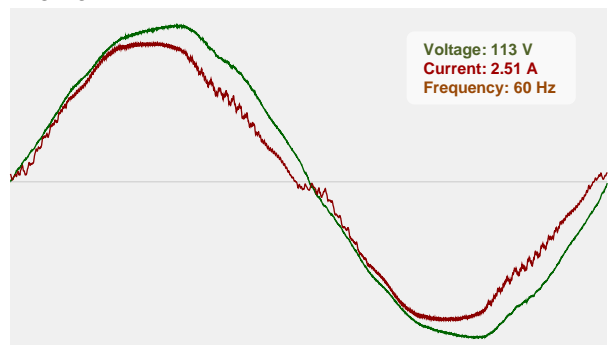
CIE 1931
x: 0.425
y: 0.395

Spectra

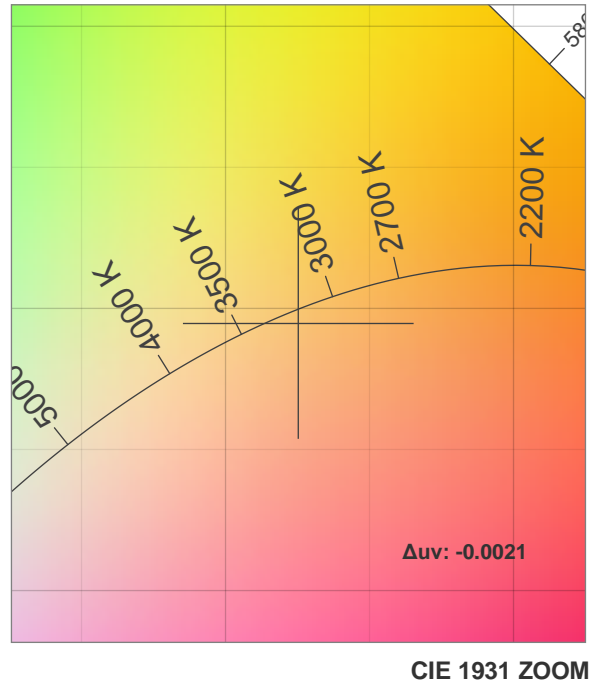
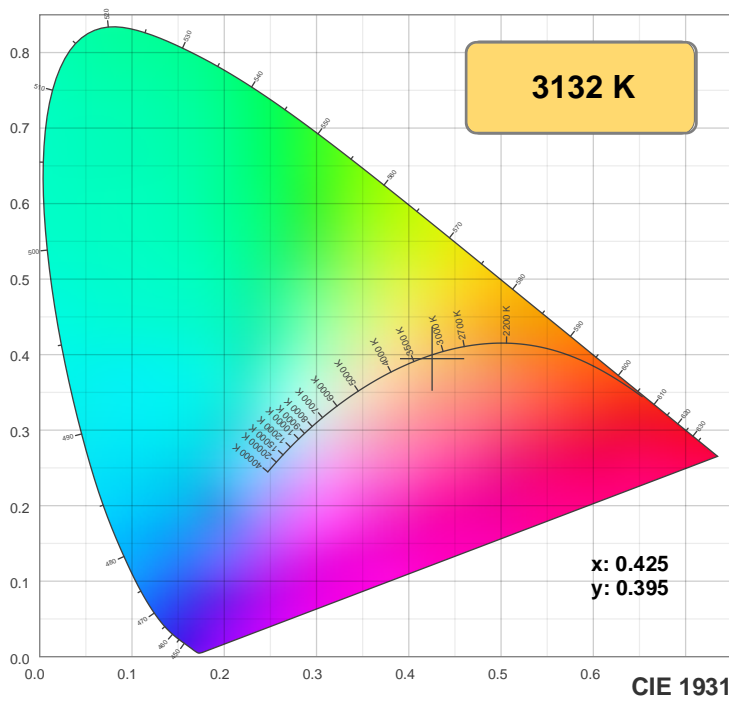
Dominant Wavelength: 584nm



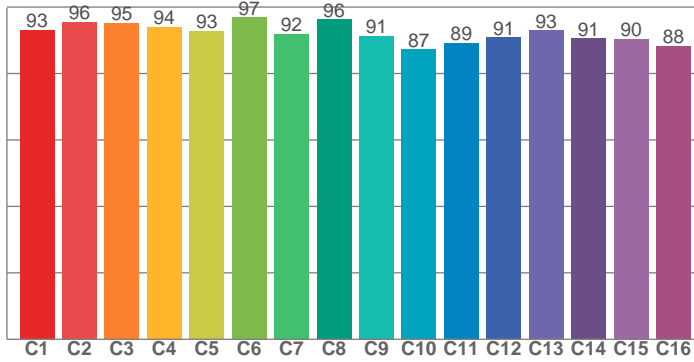
Power



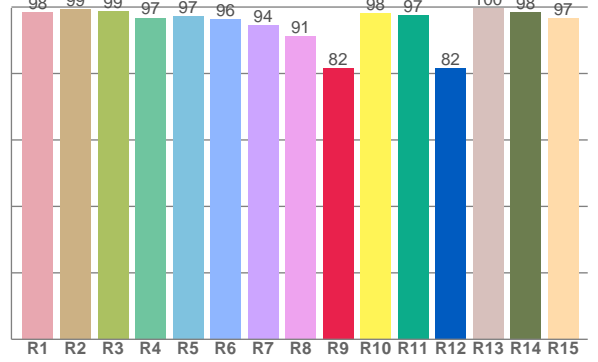
Color Details



TM30: 92.4



CRI: 96.6 (R1-R8)



CRI R values, only R1-R8 are used to calculate final CRI value

R1	R2	R3	R4	R5	R6	R7	R8	R9	R10	R11	R12	R13	R14	R15
98.4	99.3	98.7	96.8	97.3	96.4	94.5	91.2	81.6	98.1	97.5	81.7	99.6	98.4	96.5

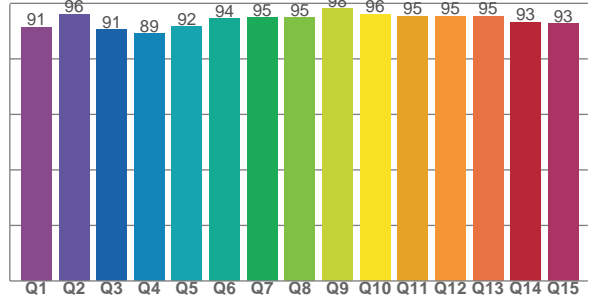
TM30 C values, 16 binned values out of total of 99 C values

C1	C2	C3	C4	C5	C6	C7	C8	C9	C10	C11	C12	C13	C14	C15	C16
93.2	95.5	95.2	94.0	92.9	96.9	91.9	96.3	91.3	87.3	89.2	90.9	93.0	90.5	90.5	88.3

CQS Q values

Q1	Q2	Q3	Q4	Q5	Q6	Q7	Q8	Q9	Q10	Q11	Q12	Q13	Q14	Q15
91.4	96.1	90.6	89.0	91.6	94.4	94.9	94.9	98.1	96.1	95.3	95.4	95.5	93.2	92.7

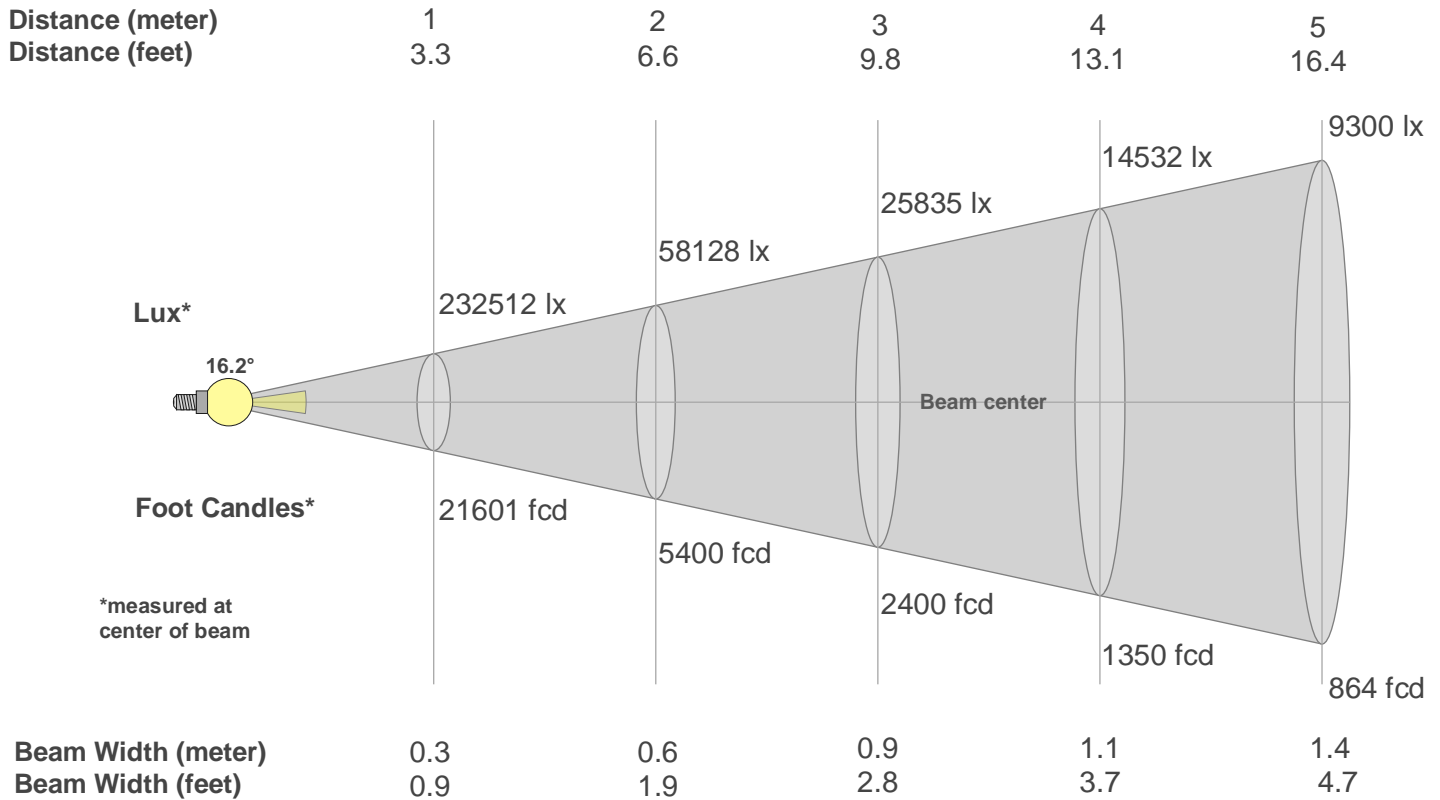
CQS: 93.4



Color Parameters

Color Temperature	Color Rendering Index	Red Component	Color Fidelity	Color Gamut	Color Quality Scale	Color Coordinate CIE 1931	Color Coordinate CIE 1931	Color Coordinate	Color Coordinate	Color Deviation from Black Body
CCT	CRI	CRI R9	TM30 Rf	TM30 Rg	CQS	x	y	u	v	Δuv
3132 K	96.6	81.6	92.4	99.3	93.4	0.425	0.395	0.247	0.344	-0.0021

Beam Details



Beam Intensities from 1-20m

m	1	2	3	4	5	6	7	8	9	10	11	12	13	14	15	16	17	18	19	20
ft	3.3	6.6	9.8	13.1	16.4	19.7	23	26.2	29.5	32.8	36.1	39.4	42.7	45.9	49.2	52.5	55.8	59.1	62.3	65.6
lx	232512	58128	25835	14532	9300	6459	4745	3633	2871	2325	1922	1615	1376	1186	1033	908	805	718	644	581
fcd	21601.2	5400.3	2400.1	1350.1	864	600	440.8	337.5	266.7	216	178.5	150	127.8	110.2	96	84.4	74.7	66.7	59.8	54

Intensities in 0° C-plane

0°	1°	2°	3°	4°	5°	6°	7°	8°	9°	10°	11°	12°	13°	14°	15°	16°	17°	18°	19°
233K	232K	229K	225K	220K	207K	190K	166K	121K	63K	0K	0K	0K	0K	0K	0K	0K	0K	0K	0K
100%	100%	99%	97%	94%	89%	82%	71%	52%	27%	0%	0%	0%	0%	0%	0%	0%	0%	0%	0%

Intensities in 90° C-plane

0°	1°	2°	3°	4°	5°	6°	7°	8°	9°	10°	11°	12°	13°	14°	15°	16°	17°	18°	19°
233K	232K	229K	225K	220K	207K	190K	166K	121K	63K	0K	0K	0K	0K	0K	0K	0K	0K	0K	0K
100%	100%	99%	97%	94%	89%	82%	71%	52%	27%	0%	0%	0%	0%	0%	0%	0%	0%	0%	0%

Intensities in 180° C-plane

0°	1°	2°	3°	4°	5°	6°	7°	8°	9°	10°	11°	12°	13°	14°	15°	16°	17°	18°	19°
233K	232K	230K	224K	214K	200K	178K	151K	121K	46K	1K	0K	0K	0K	0K	0K	0K	0K	0K	0K
100%	100%	99%	96%	92%	86%	76%	65%	52%	20%	1%	0%	0%	0%	0%	0%	0%	0%	0%	0%

Intensities in 270° C-plane

0°	1°	2°	3°	4°	5°	6°	7°	8°	9°	10°	11°	12°	13°	14°	15°	16°	17°	18°	19°
233K	232K	230K	224K	214K	200K	178K	151K	121K	46K	1K	0K	0K	0K	0K	0K	0K	0K	0K	0K
100%	100%	99%	96%	92%	86%	76%	65%	52%	20%	1%	0%	0%	0%	0%	0%	0%	0%	0%	0%

Beam Angle 50%	Field Angle 10%	Cutoff Angle 2,5%	Intensity Ratio in 120° Cone	Intensity Ratio in 90° Cone
16.2°	18.9°	19.4°	99.8%	99.8%