

Encore Profile Pro WW



Light Efficiency:

52 Lumen/Watt

Light Quality:

CRI: 96.7

Color Temperature:

3137 K

Output: 14585 lm

Peak: 132906 cd

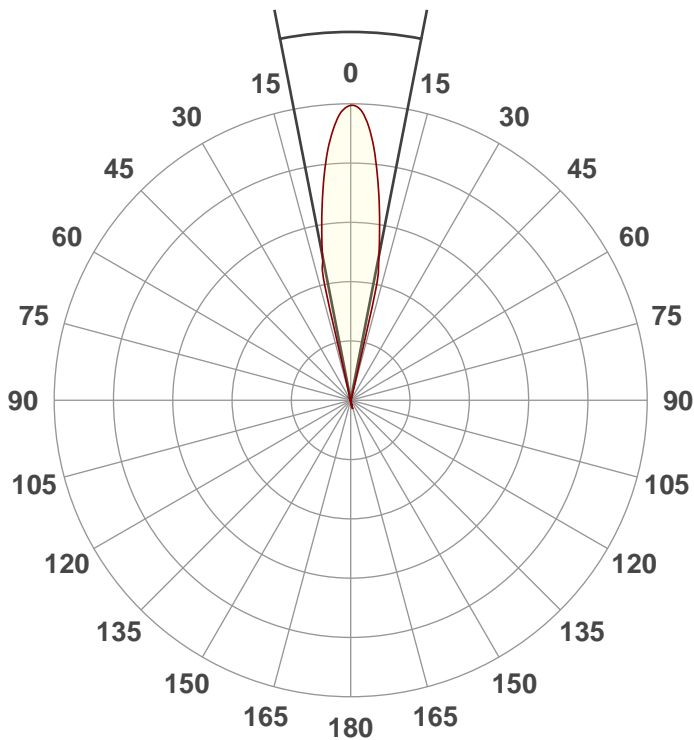
Power: 280.9 W

PF: 0.99



Beam Angle

22.1°



Test:

26Deg

Date:

2/8/2021

Note:



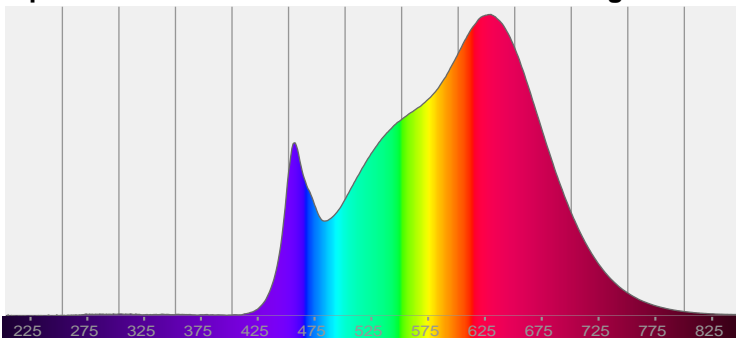
CIE 1931

x: 0.426

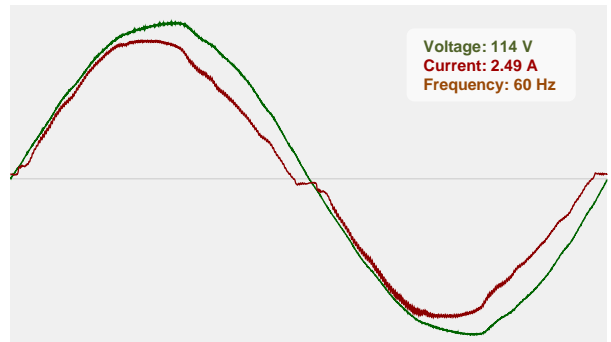
y: 0.396

Spectra

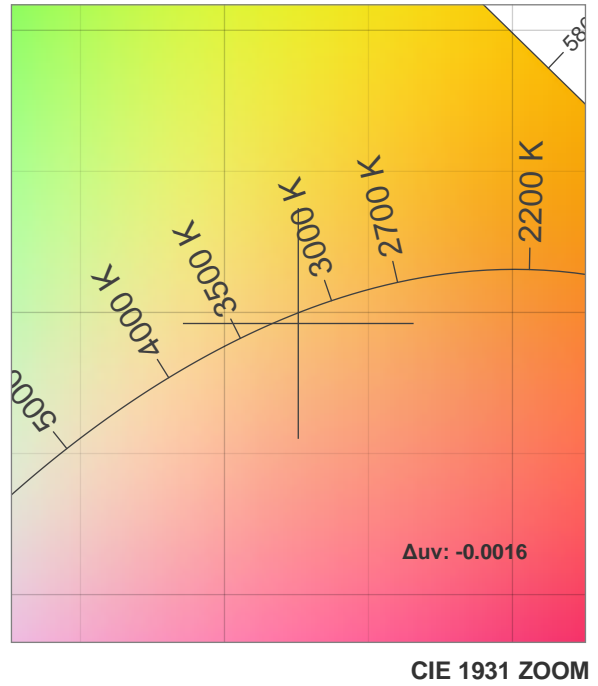
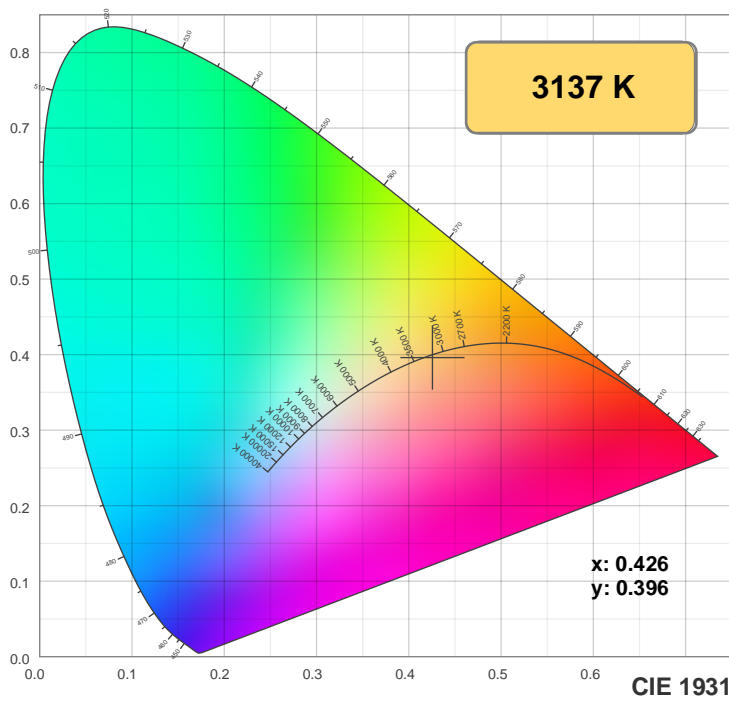
Dominant Wavelength: 584nm



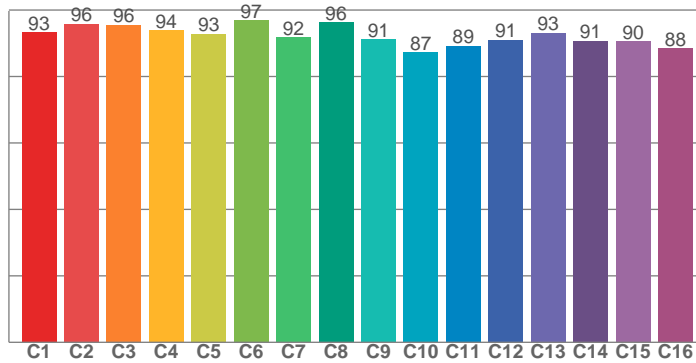
Power



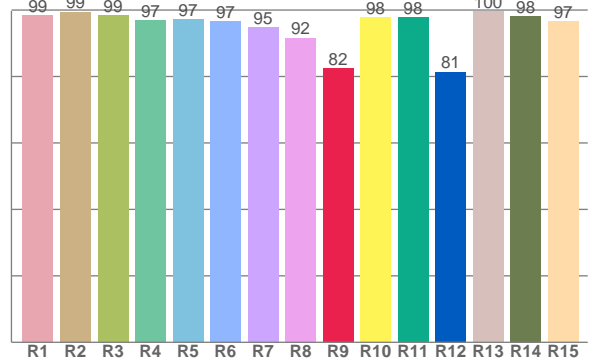
Color Details



TM30: 92.4



CRI: 96.7 (R1-R8)



CRI R values, only R1-R8 are used to calculate final CRI value

R1	R2	R3	R4	R5	R6	R7	R8	R9	R10	R11	R12	R13	R14	R15
98.5	99.5	98.5	97.0	97.3	96.6	94.9	91.7	82.4	97.8	97.8	81.4	99.6	98.2	96.5

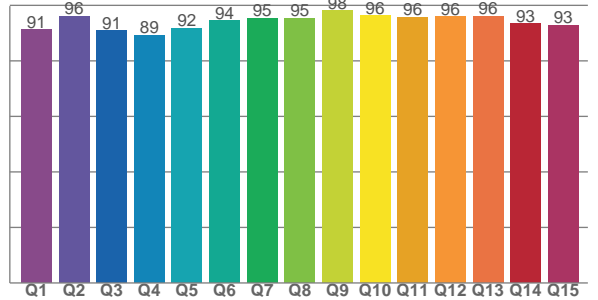
TM30 C values, 16 binned values out of total of 99 C values

C1	C2	C3	C4	C5	C6	C7	C8	C9	C10	C11	C12	C13	C14	C15	C16
93.3	95.8	95.6	93.8	92.8	97.0	91.7	96.2	91.2	87.2	89.2	91.0	93.2	90.7	90.5	88.4

CQS Q values

Q1	Q2	Q3	Q4	Q5	Q6	Q7	Q8	Q9	Q10	Q11	Q12	Q13	Q14	Q15
91.3	96.1	90.9	89.3	91.8	94.4	95.3	95.3	98.0	96.4	95.8	96.0	96.0	93.5	92.9

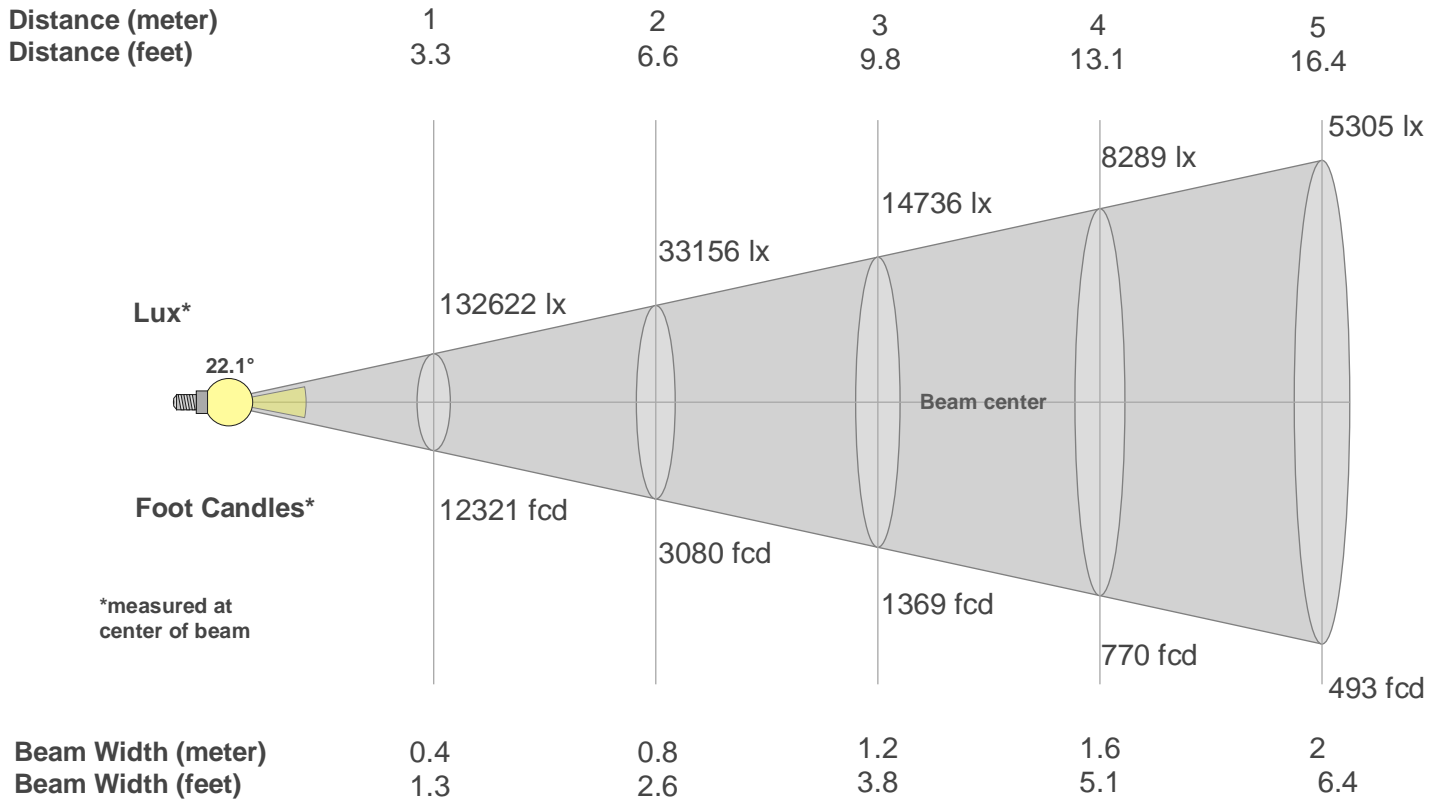
CQS: 93.6



Color Parameters

Color Temperature	Color Rendering Index	Red Component	Color Fidelity	Color Gamut	Color Quality Scale	Color Coordinate CIE 1931	Color Coordinate CIE 1931	Color Coordinate	Color Coordinate	Color Deviation from Black Body
CCT	CRI	CRI R9	TM30 Rf	TM30 Rg	CQS	x	y	u	v	Δuv
3137 K	96.7	82.4	92.4	99.2	93.6	0.426	0.396	0.247	0.344	-0.0016

Beam Details



Beam Intensities from 1-20m

m	1	2	3	4	5	6	7	8	9	10	11	12	13	14	15	16	17	18	19	20
ft	3.3	6.6	9.8	13.1	16.4	19.7	23	26.2	29.5	32.8	36.1	39.4	42.7	45.9	49.2	52.5	55.8	59.1	62.3	65.6
lx	13262 2	33156	14736	8289	5305	3684	2707	2072	1637	1326	1096	921	785	677	589	518	459	409	367	332
fcd	12321	3080.3	1369	770.1	492.8	342.3	251.4	192.5	152.1	123.2	101.8	85.6	72.9	62.9	54.8	48.1	42.6	38	34.1	30.8

Intensities in 0° C-plane

0°	1°	2°	3°	4°	5°	6°	7°	8°	9°	10°	11°	12°	13°	14°	15°	16°	17°	18°	19°
133K	132K	130K	126K	121K	115K	108K	100K	92K	83K	75K	67K	59K	43K	9K	0K	0K	0K	0K	0K
100%	99%	98%	95%	91%	86%	81%	75%	69%	63%	57%	50%	44%	33%	6%	0%	0%	0%	0%	0%

Intensities in 90° C-plane

0°	1°	2°	3°	4°	5°	6°	7°	8°	9°	10°	11°	12°	13°	14°	15°	16°	17°	18°	19°
133K	132K	130K	126K	121K	115K	108K	100K	92K	83K	75K	67K	59K	43K	9K	0K	0K	0K	0K	0K
100%	99%	98%	95%	91%	86%	81%	75%	69%	63%	57%	50%	44%	33%	6%	0%	0%	0%	0%	0%

Intensities in 180° C-plane

0°	1°	2°	3°	4°	5°	6°	7°	8°	9°	10°	11°	12°	13°	14°	15°	16°	17°	18°	19°
133K	132K	131K	127K	122K	116K	108K	100K	92K	83K	75K	67K	58K	44K	15K	4K	0K	0K	0K	0K
100%	100%	99%	96%	92%	87%	82%	76%	69%	63%	56%	50%	44%	33%	11%	3%	0%	0%	0%	0%

Intensities in 270° C-plane

0°	1°	2°	3°	4°	5°	6°	7°	8°	9°	10°	11°	12°	13°	14°	15°	16°	17°	18°	19°
133K	132K	131K	127K	122K	116K	108K	100K	92K	83K	75K	67K	58K	44K	15K	4K	0K	0K	0K	0K
100%	100%	99%	96%	92%	87%	82%	76%	69%	63%	56%	50%	44%	33%	11%	3%	0%	0%	0%	0%

Beam Angle 50%	Field Angle 10%	Cutoff Angle 2,5%	Intensity Ratio in 120° Cone	Intensity Ratio in 90° Cone
22.1°	27.9°	29.3°	99.7%	99.7%