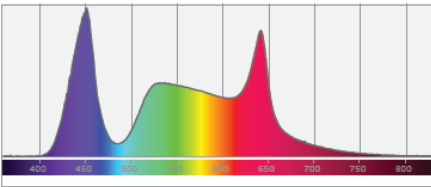
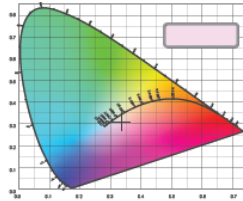


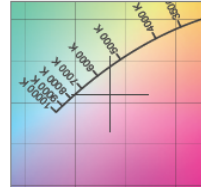
Spectral distribution



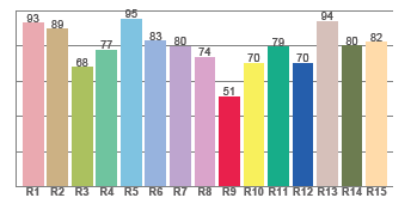
Color coordinates



Zoom color point



CRI R values



Photometric Test Report

*Due to additional product enhancements, an updated version of this report may be available online. Please check www.adj.com for the latest revision/update of this report.

Encore Profile Pro

Color



Light Efficiency:

17 Lumen/Watt

Light Quality:

CRI: 71.0

Color Temperature:

4584 K

Output: 5018 lm

Peak: 37095 cd

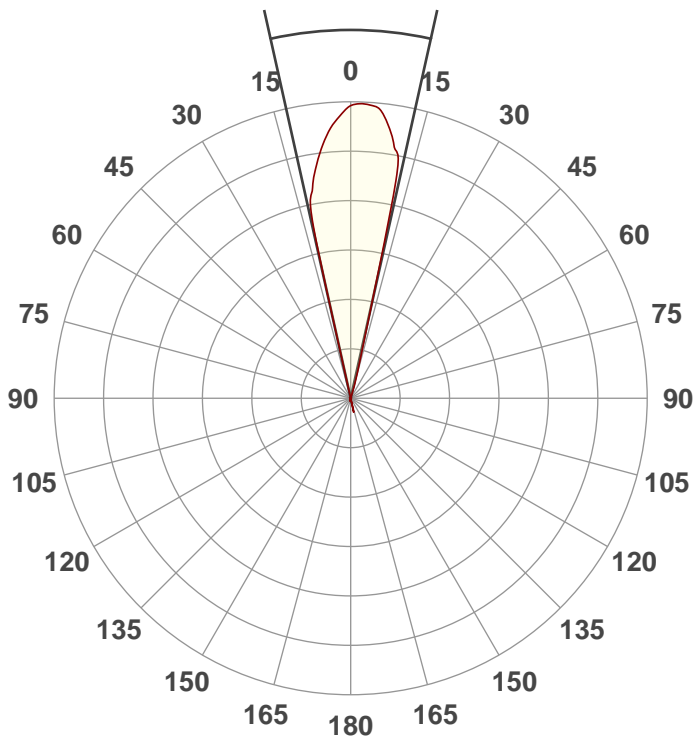
Power: 290 W

PF: 0.99



Beam Angle

25.1°



Test:

Full On 26Deg

Date:

11/18/2019

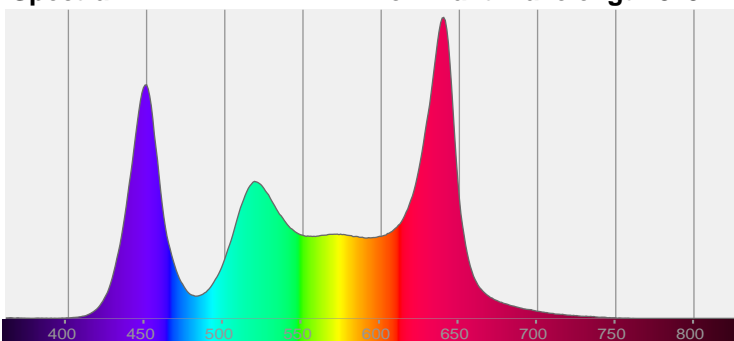
Note:



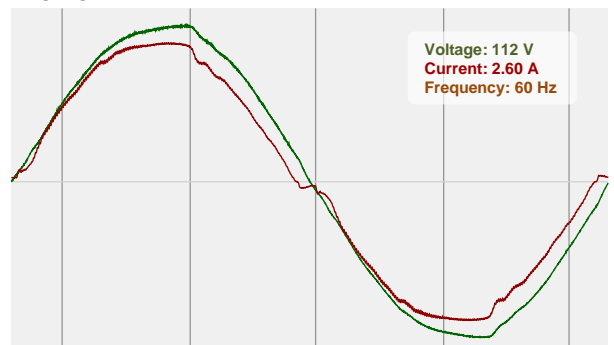
CIE 1931
x: 0.351
y: 0.318

Spectra

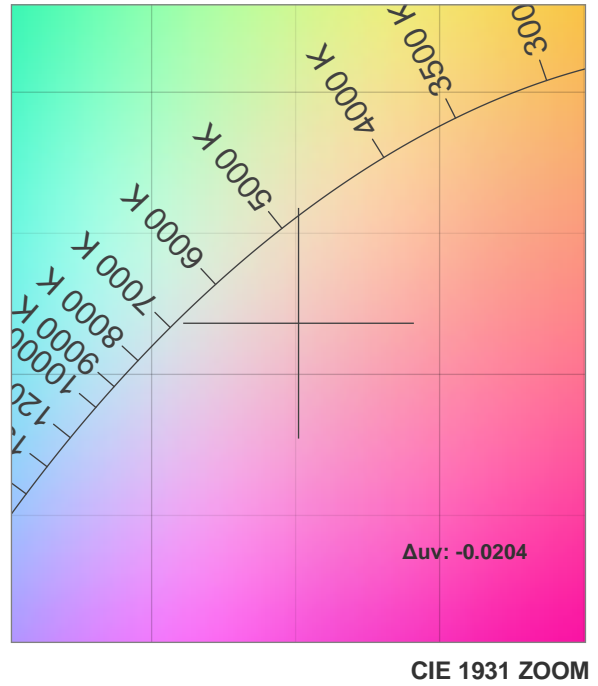
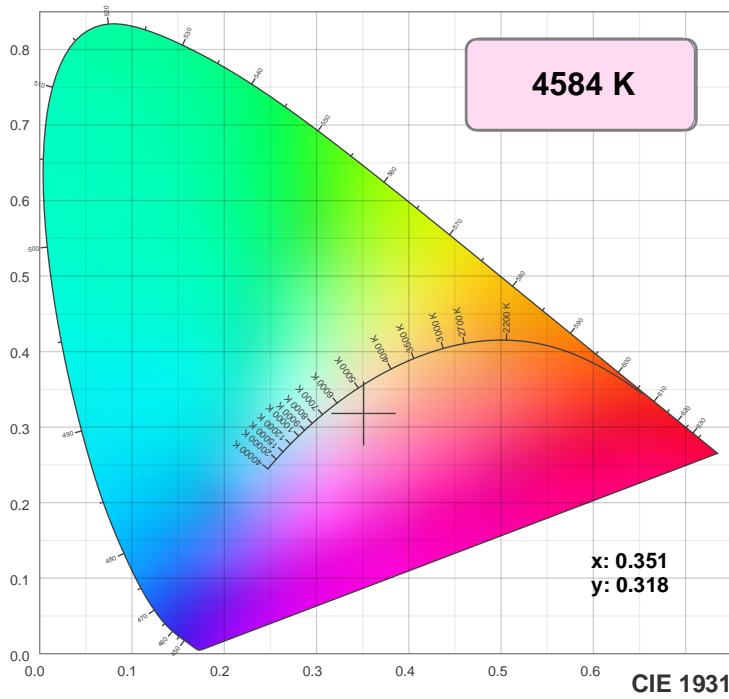
Dominant Wavelength: 829nm



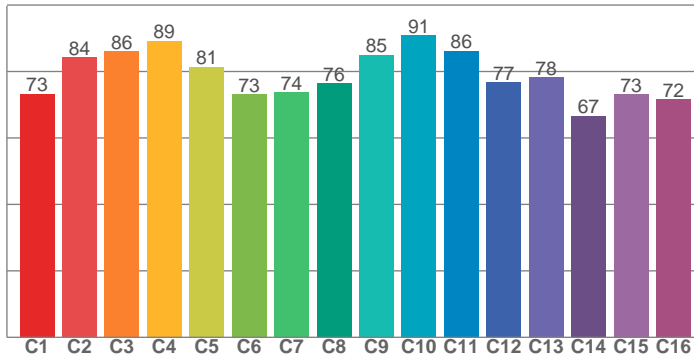
Power



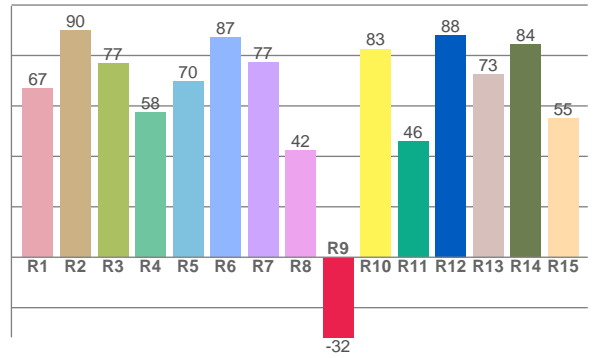
Color Details



TM30: 80.4



CRI: 71.0 (R1-R8)



CRI R values, only R1-R8 are used to calculate final CRI value

R1	R2	R3	R4	R5	R6	R7	R8	R9	R10	R11	R12	R13	R14	R15
66.9	90.0	76.9	57.6	69.7	87.2	77.2	42.4	-31.7	82.6	45.9	88.1	72.7	84.4	55.2

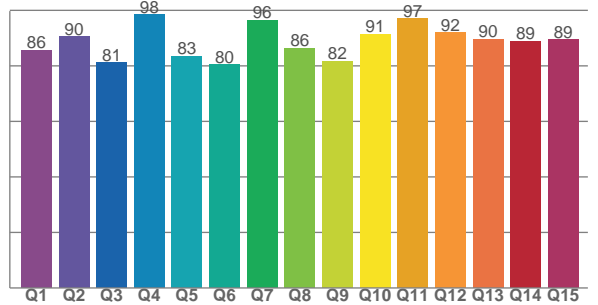
TM30 C values, 16 binned values out of total of 99 C values

C1	C2	C3	C4	C5	C6	C7	C8	C9	C10	C11	C12	C13	C14	C15	C16
73.2	84.2	86.1	89.2	81.4	73.1	73.7	76.4	85.0	90.9	86.3	76.7	78.2	66.6	73.2	71.6

CQS Q values

Q1	Q2	Q3	Q4	Q5	Q6	Q7	Q8	Q9	Q10	Q11	Q12	Q13	Q14	Q15
85.6	90.4	81.3	98.5	83.5	80.4	96.5	86.4	81.6	91.4	97.1	92.0	89.6	88.9	89.3

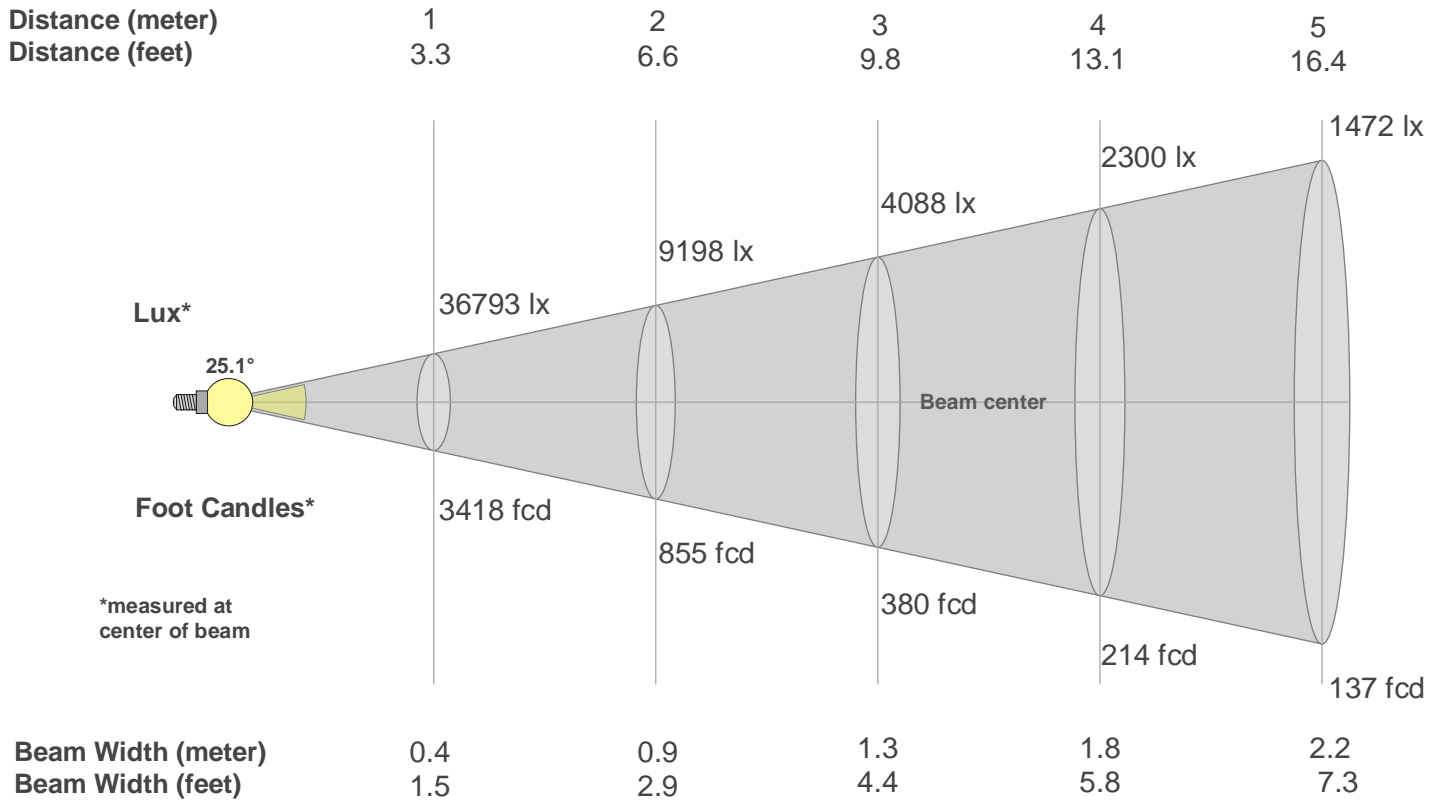
CQS: 87.5



Color Parameters

Color Temperature	Color Rendering Index	Red Component	Color Fidelity	Color Gamut	Color Quality Scale	Color Coordinate CIE 1931	Color Coordinate CIE 1931	Color Coordinate	Color Coordinate	Color Deviation from Black Body
CCT	CRI	CRI R9	TM30 Rf	TM30 Rg	CQS	x	y	u	v	Δuv
4584 K	71.0	-31.7	80.4	120.6	87.5	0.351	0.318	0.230	0.312	-0.0204

Beam Details



Beam Intensities from 1-20m

m	1	2	3	4	5	6	7	8	9	10	11	12	13	14	15	16	17	18	19	20
ft	3.3	6.6	9.8	13.1	16.4	19.7	23	26.2	29.5	32.8	36.1	39.4	42.7	45.9	49.2	52.5	55.8	59.1	62.3	65.6
lx	36793	9198	4088	2300	1472	1022	751	575	454	368	304	256	218	188	164	144	127	114	102	92
fcd	3418.2	854.5	379.8	213.6	136.7	94.9	69.8	53.4	42.2	34.2	28.2	23.7	20.2	17.4	15.2	13.4	11.8	10.5	9.5	8.5

Intensities in 0° C-plane

0°	1°	2°	3°	4°	5°	6°	7°	8°	9°	10°	11°	12°	13°	14°	15°	16°	17°	18°	19°
36.8K	36.3K	35.7K	35.0K	34.3K	33.4K	32.4K	31.3K	30.1K	28.7K	27.3K	25.1K	22.6K	13.8K	2.7K	0.0K	0.0K	0.0K	0.0K	0.0K
100%	99%	97%	95%	93%	91%	88%	85%	82%	78%	74%	68%	62%	37%	7%	0%	0%	0%	0%	0%

Intensities in 90° C-plane

0°	1°	2°	3°	4°	5°	6°	7°	8°	9°	10°	11°	12°	13°	14°	15°	16°	17°	18°	19°
36.8K	36.3K	35.7K	35.0K	34.3K	33.4K	32.4K	31.3K	30.1K	28.7K	27.3K	25.1K	22.6K	13.8K	2.7K	0.0K	0.0K	0.0K	0.0K	0.0K
100%	99%	97%	95%	93%	91%	88%	85%	82%	78%	74%	68%	62%	37%	7%	0%	0%	0%	0%	0%

Intensities in 180° C-plane

0°	1°	2°	3°	4°	5°	6°	7°	8°	9°	10°	11°	12°	13°	14°	15°	16°	17°	18°	19°
36.8K	37.0K	37.1K	37.0K	36.9K	36.7K	36.3K	35.4K	34.5K	33.2K	31.7K	29.6K	25.0K	13.6K	4.5K	1.9K	0.0K	0.0K	0.0K	0.0K
100%	100%	101%	101%	100%	100%	99%	96%	94%	90%	86%	80%	68%	37%	12%	5%	0%	0%	0%	0%

Intensities in 270° C-plane

0°	1°	2°	3°	4°	5°	6°	7°	8°	9°	10°	11°	12°	13°	14°	15°	16°	17°	18°	19°
36.8K	37.0K	37.1K	37.0K	36.9K	36.7K	36.3K	35.4K	34.5K	33.2K	31.7K	29.6K	25.0K	13.6K	4.5K	1.9K	0.0K	0.0K	0.0K	0.0K
100%	100%	101%	101%	100%	100%	99%	96%	94%	90%	86%	80%	68%	37%	12%	5%	0%	0%	0%	0%

Beam Angle 50%	Field Angle 10%	Cutoff Angle 2,5%	Intensity Ratio in 120° Cone	Intensity Ratio in 90° Cone
25.1°	28.2°	29.5°	100.0%	100.0%