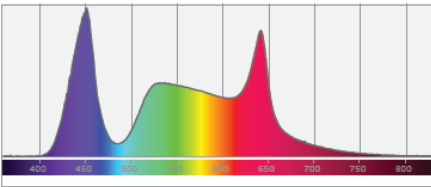
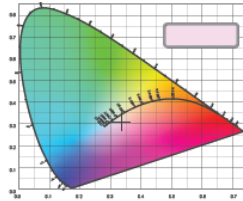


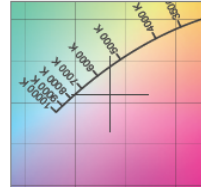
Spectral distribution



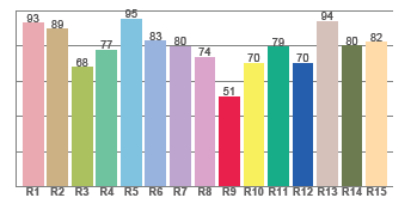
Color coordinates



Zoom color point



CRI R values



Photometric Test Report

*Due to additional product enhancements, an updated version of this report may be available online. Please check www.adj.com for the latest revision/update of this report.

Hydro Wash X19



Light Efficiency:

10 Lumen/Watt

Light Quality:

CRI: 83.4

Color Temperature:

6340 K

Output: 5207 lm

Peak: 64073 cd

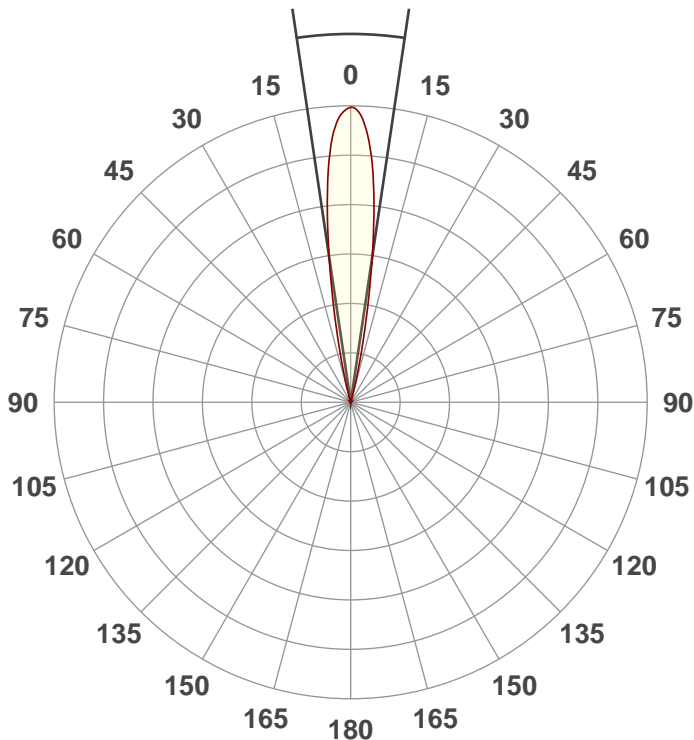
Power: 548 W

PF: 1.0



Beam Angle

16.9°



Test:

Zoom 50% CRI

Date:

11/11/2019

Note:

R @ 45%

G @ 51%

W @ 100%

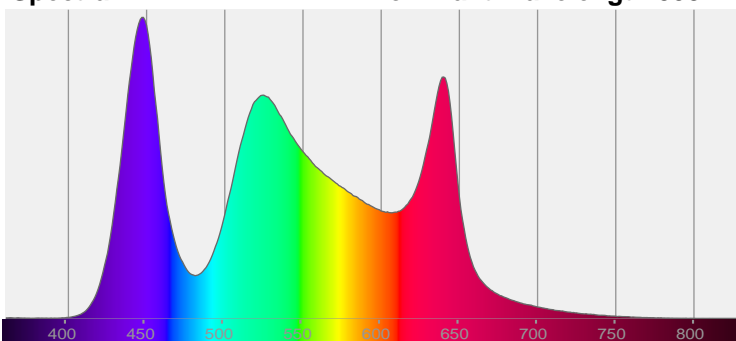
CIE 1931

x: 0.314

y: 0.341

Spectra

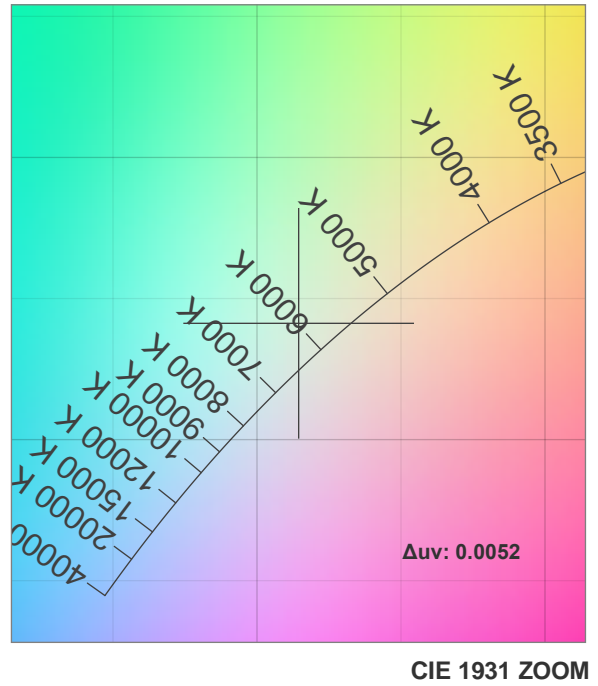
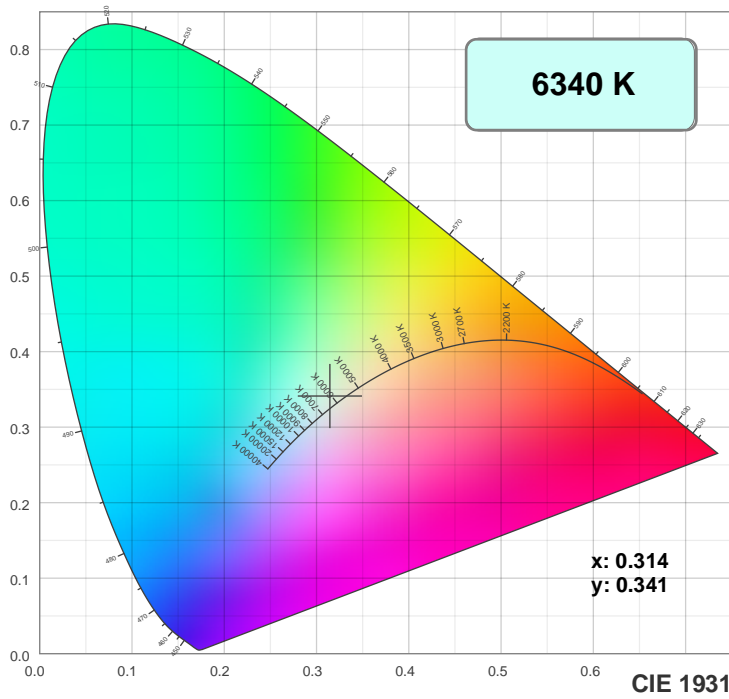
Dominant Wavelength: 558nm



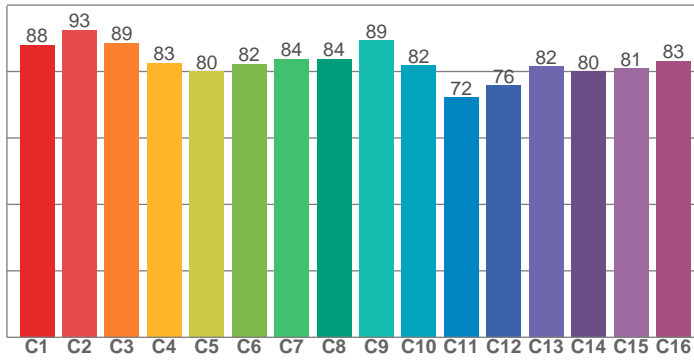
Power

Voltage: 115 V
Current: 4.77 A
Frequency: 0 Hz

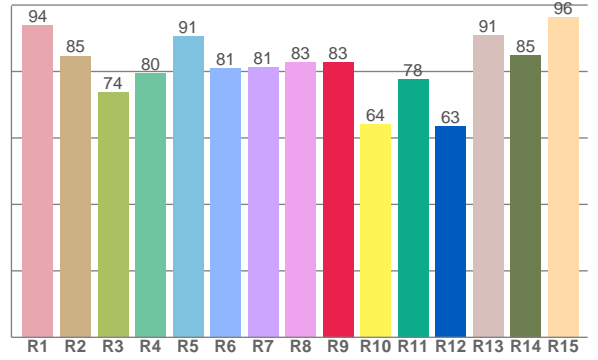
Color Details



TM30: 83.1



CRI: 83.4 (R1-R8)



CRI R values, only R1-R8 are used to calculate final CRI value

R1	R2	R3	R4	R5	R6	R7	R8	R9	R10	R11	R12	R13	R14	R15
94.0	84.7	73.6	79.5	90.7	81.0	81.2	82.7	82.9	64.0	77.7	63.4	90.9	85.0	96.3

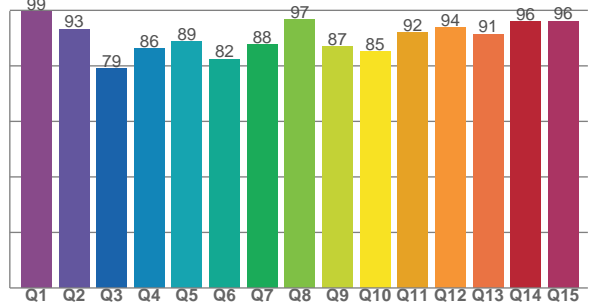
TM30 C values, 16 binned values out of total of 99 C values

C1	C2	C3	C4	C5	C6	C7	C8	C9	C10	C11	C12	C13	C14	C15	C16
87.9	92.5	88.6	82.6	80.1	82.2	83.8	83.8	89.4	81.8	72.2	75.9	81.6	80.0	81.0	83.1

CQS Q values

Q1	Q2	Q3	Q4	Q5	Q6	Q7	Q8	Q9	Q10	Q11	Q12	Q13	Q14	Q15
99.4	93.2	79.0	86.2	88.7	82.5	87.6	96.6	86.9	85.2	91.9	93.7	91.5	96.0	96.1

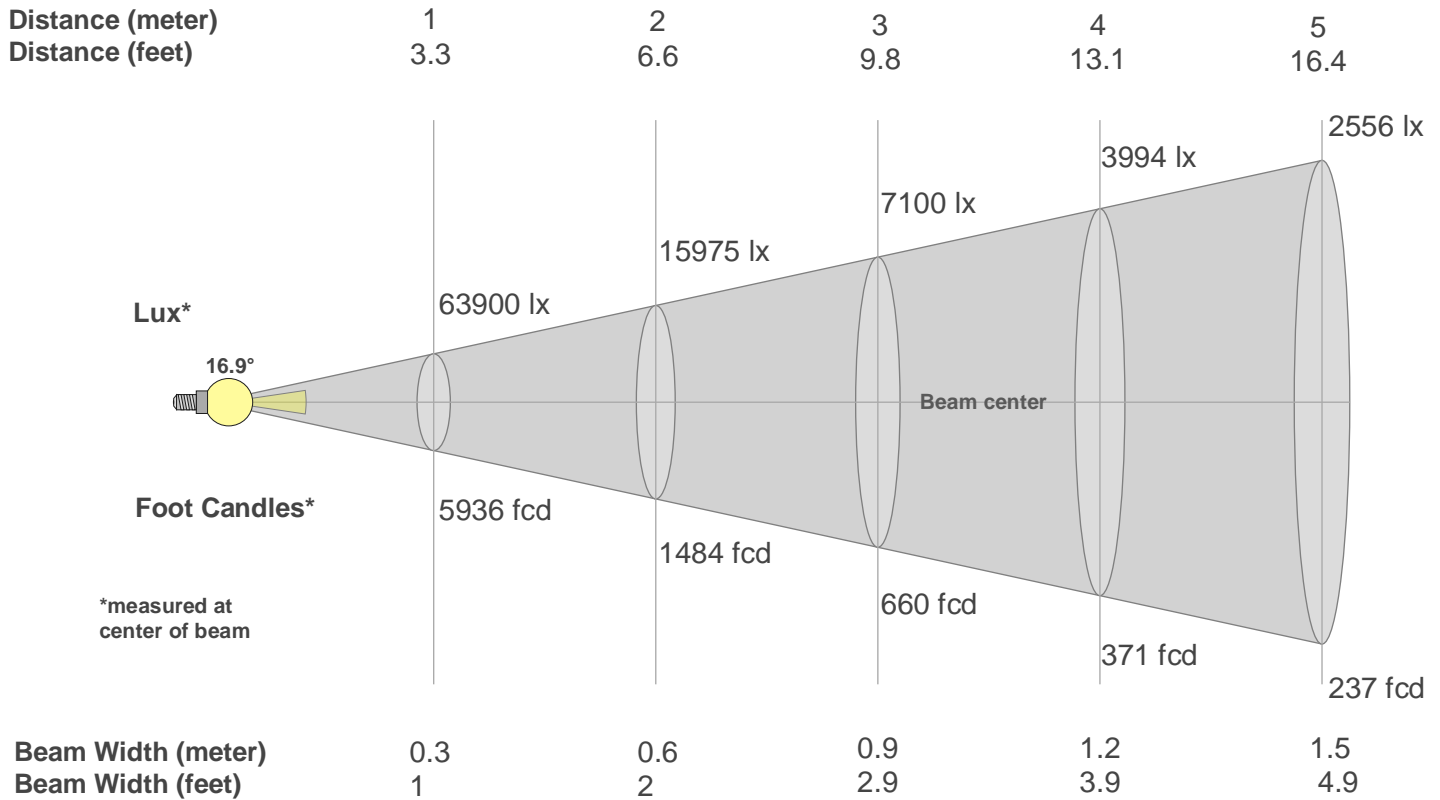
CQS: 88.8



Color Parameters

Color Temperature	Color Rendering Index	Red Component	Color Fidelity	Color Gamut	Color Quality Scale	Color Coordinate CIE 1931	Color Coordinate CIE 1931	Color Coordinate	Color Coordinate	Color Deviation from Black Body
CCT	CRI	CRI R9	TM30 Rf	TM30 Rg	CQS	x	y	u	v	Δuv
6340 K	83.4	82.9	83.1	106.6	88.8	0.314	0.341	0.195	0.317	0.0052

Beam Details



Beam Intensities from 1-20m

m	1	2	3	4	5	6	7	8	9	10	11	12	13	14	15	16	17	18	19	20
ft	3.3	6.6	9.8	13.1	16.4	19.7	23	26.2	29.5	32.8	36.1	39.4	42.7	45.9	49.2	52.5	55.8	59.1	62.3	65.6
lx	63900	15975	7100	3994	2556	1775	1304	998	789	639	528	444	378	326	284	250	221	197	177	160
fcd	5936.5	1484.1	659.6	371	237.5	164.9	121.2	92.8	73.3	59.4	49.1	41.2	35.1	30.3	26.4	23.2	20.5	18.3	16.4	14.8

Intensities in 0° C-plane

0°	1°	2°	3°	4°	5°	6°	7°	8°	9°	10°	11°	12°	13°	14°	15°	16°	17°	18°	19°
63.9K	63.6K	62.3K	60.3K	57.6K	53.0K	47.8K	41.6K	34.9K	28.3K	21.9K	16.4K	11.5K	7.5K	4.7K	2.5K	1.2K	0.4K	0.0K	0.0K
100%	99%	98%	94%	90%	83%	75%	65%	55%	44%	34%	26%	18%	12%	7%	4%	2%	1%	0%	0%

Intensities in 90° C-plane

0°	1°	2°	3°	4°	5°	6°	7°	8°	9°	10°	11°	12°	13°	14°	15°	16°	17°	18°	19°
63.9K	63.6K	62.3K	60.3K	57.6K	53.0K	47.8K	41.6K	34.9K	28.3K	21.9K	16.4K	11.5K	7.5K	4.7K	2.5K	1.2K	0.4K	0.0K	0.0K
100%	99%	98%	94%	90%	83%	75%	65%	55%	44%	34%	26%	18%	12%	7%	4%	2%	1%	0%	0%

Intensities in 180° C-plane

0°	1°	2°	3°	4°	5°	6°	7°	8°	9°	10°	11°	12°	13°	14°	15°	16°	17°	18°	19°
63.9K	63.6K	62.4K	59.9K	56.7K	52.7K	47.3K	41.4K	34.9K	28.3K	21.8K	16.2K	11.4K	7.3K	4.5K	2.5K	1.0K	0.4K	0.1K	0.0K
100%	99%	98%	94%	89%	82%	74%	65%	55%	44%	34%	25%	18%	11%	7%	4%	2%	1%	0%	0%

Intensities in 270° C-plane

0°	1°	2°	3°	4°	5°	6°	7°	8°	9°	10°	11°	12°	13°	14°	15°	16°	17°	18°	19°
63.9K	63.6K	62.4K	59.9K	56.7K	52.7K	47.3K	41.4K	34.9K	28.3K	21.8K	16.2K	11.4K	7.3K	4.5K	2.5K	1.0K	0.4K	0.1K	0.0K
100%	99%	98%	94%	89%	82%	74%	65%	55%	44%	34%	25%	18%	11%	7%	4%	2%	1%	0%	0%

Beam Angle 50%	Field Angle 10%	Cutoff Angle 2,5%	Intensity Ratio in 120° Cone	Intensity Ratio in 90° Cone
16.9°	26.6°	31.2°	100.0%	100.0%