

# Focus Spot 4Z



Light Efficiency:

21 Lumen/Watt

Light Quality:

CRI: 76.4

Color Temperature:

21333 K

Output: 5116 lm

Peak: 147132 cd

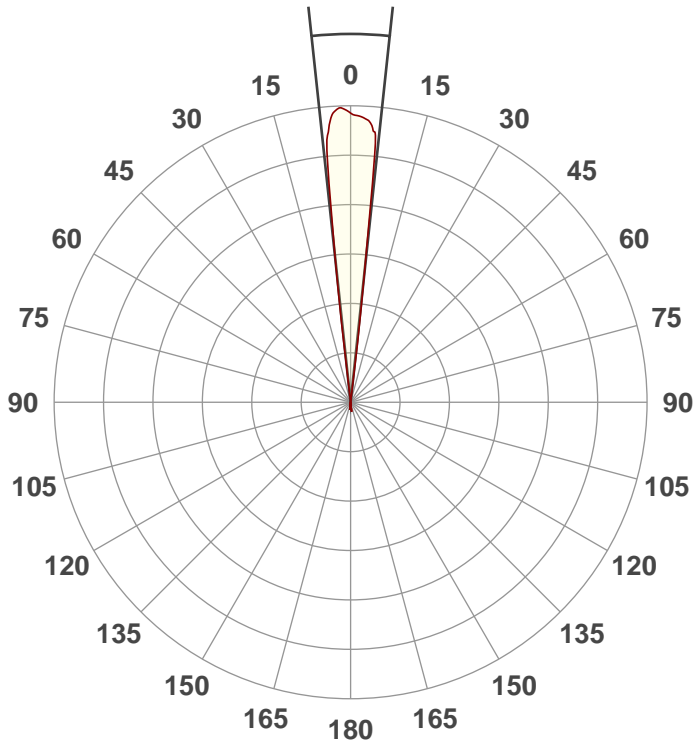
Power: 243.8 W

PF: 0.99



Beam Angle

12.2°



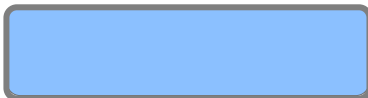
Test:

Zoom In

Date:

2/15/2019

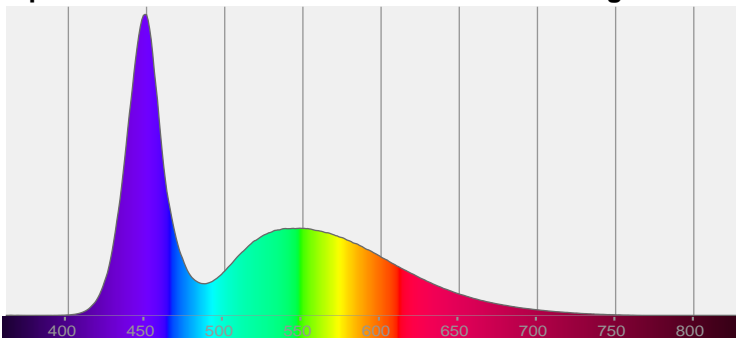
Note:



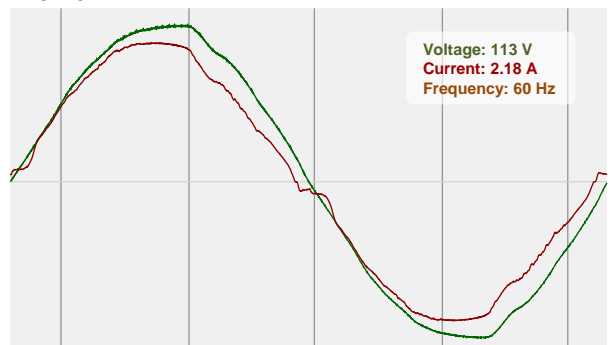
CIE 1931  
x: 0.261  
y: 0.250

Spectra

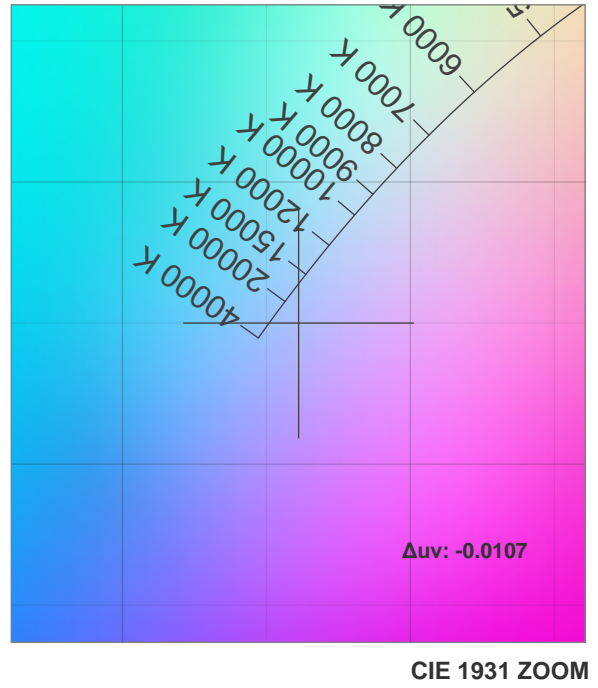
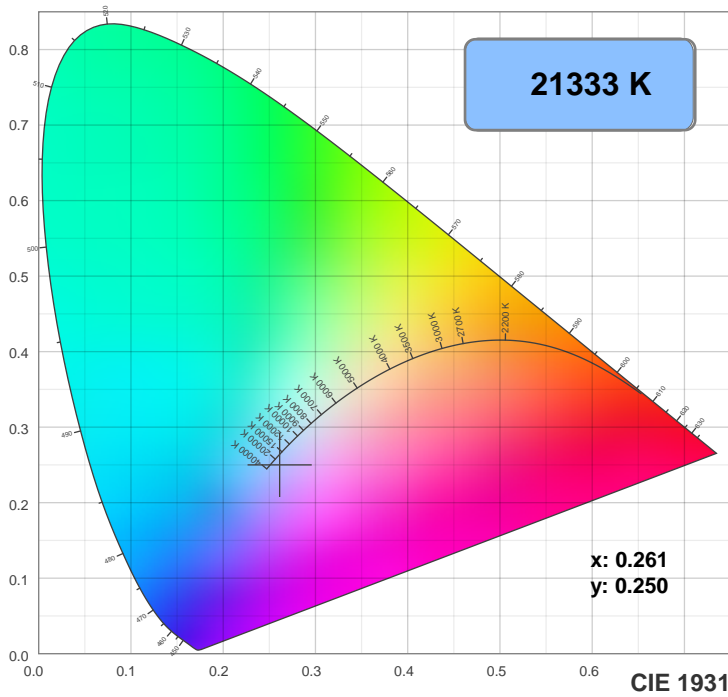
Dominant Wavelength: 468nm



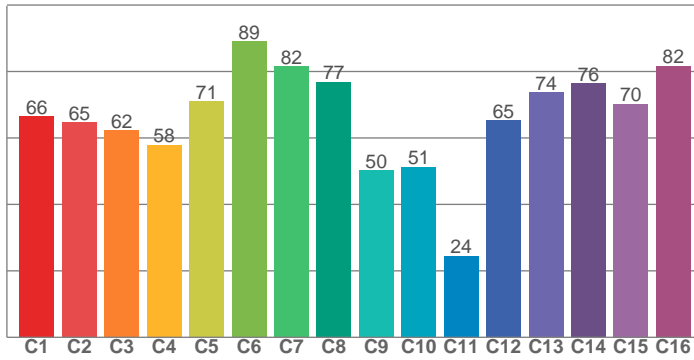
Power



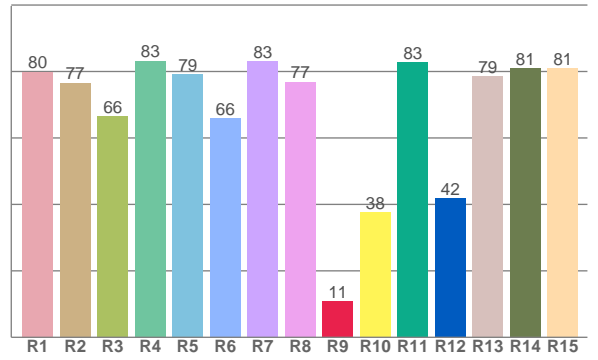
## Color Details



TM30: 67.5



CRI: 76.4 (R1-R8)



CRI R values, only R1-R8 are used to calculate final CRI value

R1	R2	R3	R4	R5	R6	R7	R8	R9	R10	R11	R12	R13	R14	R15
79.9	76.6	66.5	83.2	79.2	66.0	83.0	76.9	10.8	37.6	82.8	41.7	78.6	81.0	81.0

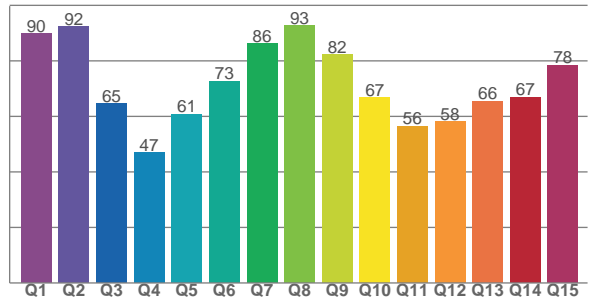
TM30 C values, 16 binned values out of total of 99 C values

C1	C2	C3	C4	C5	C6	C7	C8	C9	C10	C11	C12	C13	C14	C15	C16
66.5	64.7	62.3	57.9	71.0	89.0	81.5	76.8	50.2	51.2	24.5	65.2	73.6	76.4	70.2	81.7

CQS Q values

Q1	Q2	Q3	Q4	Q5	Q6	Q7	Q8	Q9	Q10	Q11	Q12	Q13	Q14	Q15
89.7	92.2	64.6	47.0	60.8	72.7	86.3	92.8	82.2	66.8	56.4	58.1	65.5	66.9	78.4

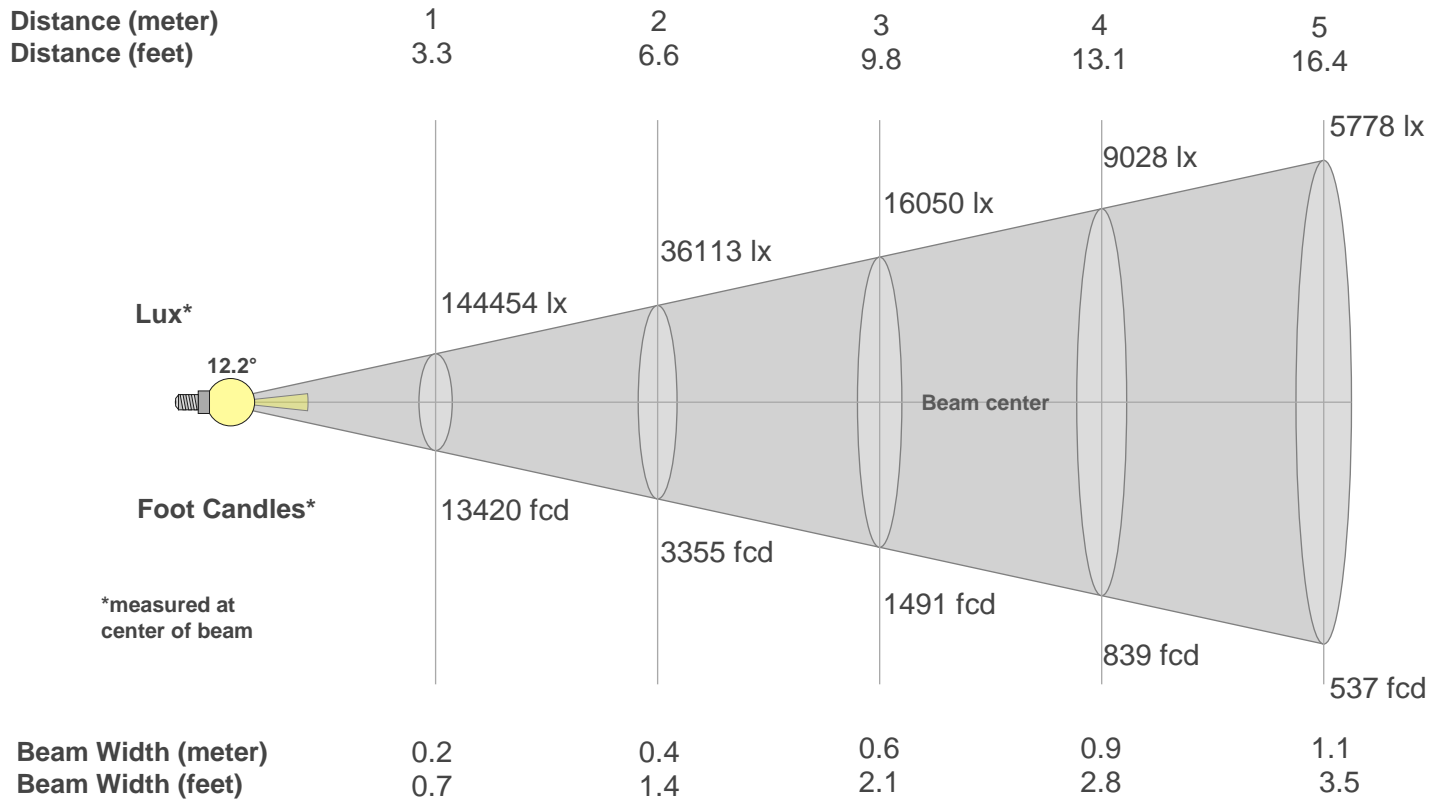
CQS: 68.8



## Color Parameters

Color Temperature	Color Rendering Index	Red Component	Color Fidelity	Color Gamut	Color Quality Scale	Color Coordinate CIE 1931	Color Coordinate CIE 1931	Color Coordinate	Color Coordinate	Color Deviation from Black Body
CCT	CRI	CRI R9	TM30 Rf	TM30 Rg	CQS	x	y	u	v	Δuv
21333 K	76.4	10.8	67.5	94.9	68.8	0.261	0.250	0.191	0.274	-0.0107

## Beam Details



### Beam Intensities from 1-20m

m	1	2	3	4	5	6	7	8	9	10	11	12	13	14	15	16	17	18	19	20
ft	3.3	6.6	9.8	13.1	16.4	19.7	23	26.2	29.5	32.8	36.1	39.4	42.7	45.9	49.2	52.5	55.8	59.1	62.3	65.6
lx	144454	36113	16050	9028	5778	4013	2948	2257	1783	1445	1194	1003	855	737	642	564	500	446	400	361
fcd	13420.2	3355	1491.1	838.8	536.8	372.8	273.9	209.7	165.7	134.2	110.9	93.2	79.4	68.5	59.6	52.4	46.4	41.4	37.2	33.6

### Intensities in 0° C-plane

0°	1°	2°	3°	4°	5°	6°	7°	8°	9°	10°	11°	12°	13°	14°	15°	16°	17°	18°	19°
144K	146K	147K	146K	142K	130K	81K	10K	0K	0K	0K	0K	0K	0K	0K	0K	0K	0K	0K	0K
100%	101%	102%	101%	98%	90%	56%	7%	0%	0%	0%	0%	0%	0%	0%	0%	0%	0%	0%	0%

### Intensities in 90° C-plane

0°	1°	2°	3°	4°	5°	6°	7°	8°	9°	10°	11°	12°	13°	14°	15°	16°	17°	18°	19°
144K	146K	147K	146K	142K	130K	81K	10K	0K	0K	0K	0K	0K	0K	0K	0K	0K	0K	0K	0K
100%	101%	102%	101%	98%	90%	56%	7%	0%	0%	0%	0%	0%	0%	0%	0%	0%	0%	0%	0%

### Intensities in 180° C-plane

0°	1°	2°	3°	4°	5°	6°	7°	8°	9°	10°	11°	12°	13°	14°	15°	16°	17°	18°	19°
144K	143K	143K	142K	140K	132K	82K	13K	0K	0K	0K	0K	0K	0K	0K	0K	0K	0K	0K	0K
100%	99%	99%	98%	97%	92%	57%	9%	0%	0%	0%	0%	0%	0%	0%	0%	0%	0%	0%	0%

### Intensities in 270° C-plane

0°	1°	2°	3°	4°	5°	6°	7°	8°	9°	10°	11°	12°	13°	14°	15°	16°	17°	18°	19°
144K	143K	143K	142K	140K	132K	82K	13K	0K	0K	0K	0K	0K	0K	0K	0K	0K	0K	0K	0K
100%	99%	99%	98%	97%	92%	57%	9%	0%	0%	0%	0%	0%	0%	0%	0%	0%	0%	0%	0%

Beam Angle 50%	Field Angle 10%	Cutoff Angle 2,5%	Intensity Ratio in 120° Cone	Intensity Ratio in 90° Cone
12.2°	13.9°	14.3°	100.0%	100.0%