

# Hydro Beam X2



Light Efficiency:

7 Lumen/Watt

Light Quality:

CRI: 79.1

Color Temperature:

6333 K

Output: 3774 lm

Peak: 377947 cd

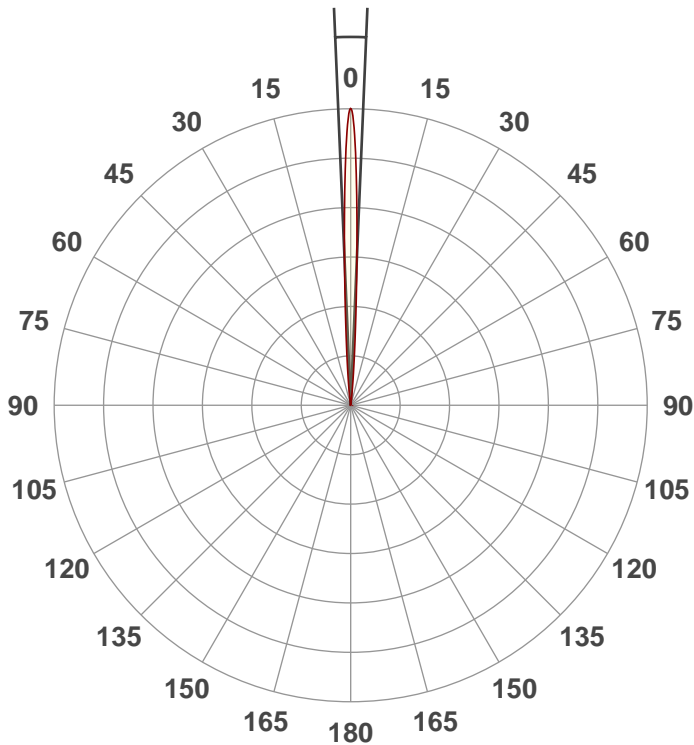
Power: 512 W

PF: 1.0



Beam Angle

4.8°



Test:

Frost

Date:

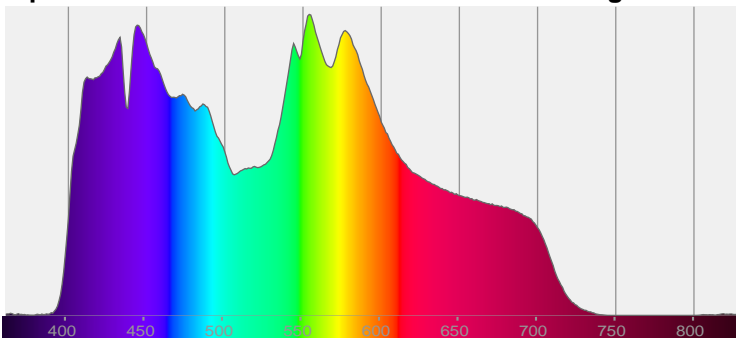
7/16/2019

Note:

CIE 1931  
x: 0.317  
y: 0.324

Spectra

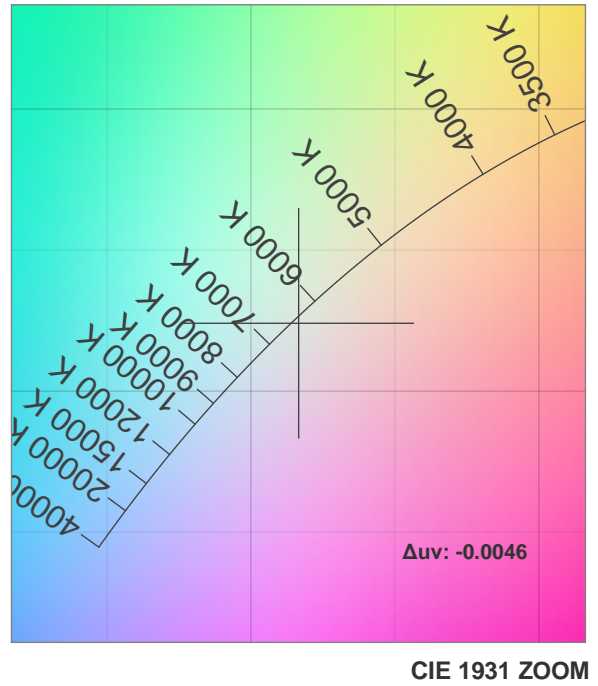
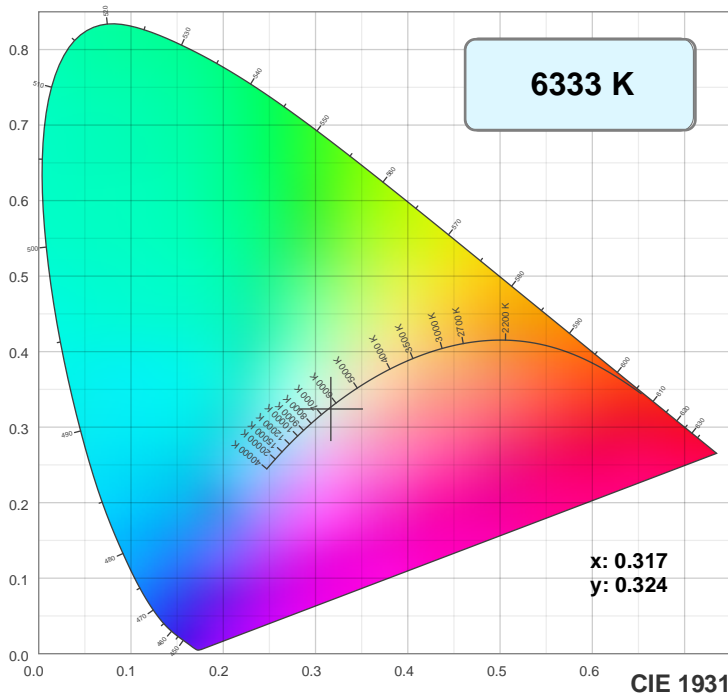
Dominant Wavelength: 829nm



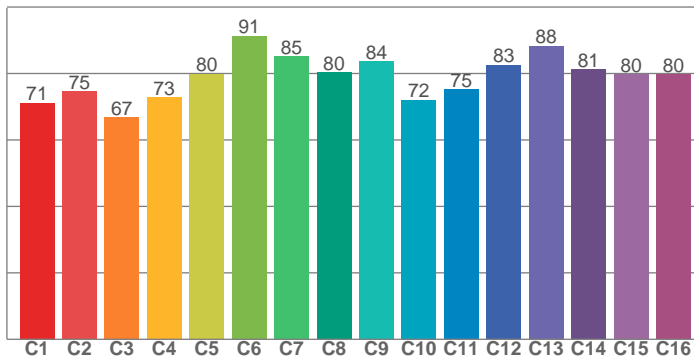
Power

Voltage: 115 V  
Current: 4.45 A  
Frequency: 0 Hz

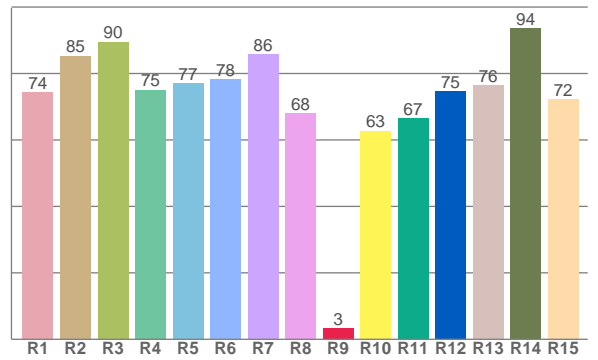
## Color Details



TM30: 78.8



CRI: 79.1 (R1-R8)



CRI R values, only R1-R8 are used to calculate final CRI value

R1	R2	R3	R4	R5	R6	R7	R8	R9	R10	R11	R12	R13	R14	R15
74.3	85.4	89.5	75.1	77.0	78.2	85.7	67.9	3.3	62.7	66.5	74.7	76.4	93.6	72.3

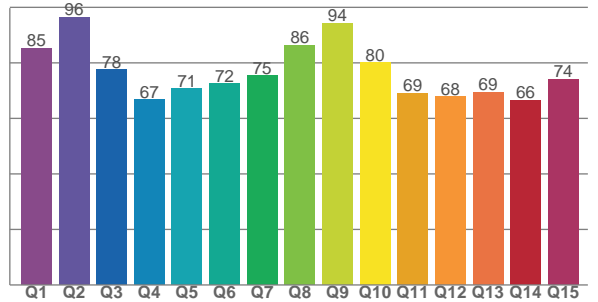
TM30 C values, 16 binned values out of total of 99 C values

C1	C2	C3	C4	C5	C6	C7	C8	C9	C10	C11	C12	C13	C14	C15	C16
71.1	74.5	66.8	72.8	79.8	91.3	85.2	80.2	83.7	72.0	75.2	82.6	88.3	81.2	79.8	79.7

CQS Q values

Q1	Q2	Q3	Q4	Q5	Q6	Q7	Q8	Q9	Q10	Q11	Q12	Q13	Q14	Q15
85.3	96.5	77.6	66.8	70.7	72.4	75.4	86.4	94.3	80.1	69.0	67.9	69.4	66.5	74.1

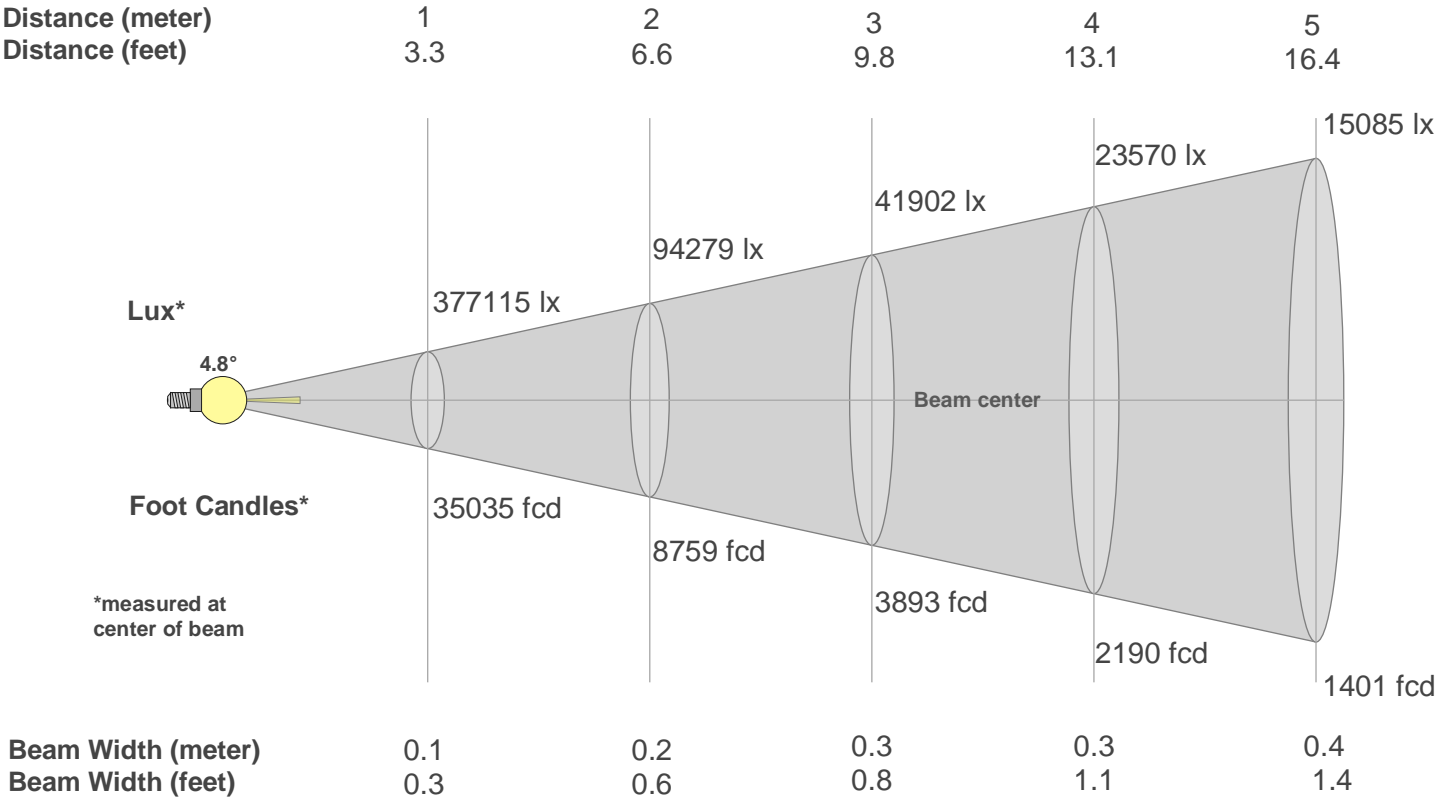
CQS: 75.0



## Color Parameters

Color Temperature	Color Rendering Index	Red Component	Color Fidelity	Color Gamut	Color Quality Scale	Color Coordinate CIE 1931	Color Coordinate CIE 1931	Color Coordinate	Color Coordinate	Color Deviation from Black Body
CCT	CRI	CRI R9	TM30 Rf	TM30 Rg	CQS	x	y	u	v	Δuv
6333 K	79.1	3.3	78.8	92.9	75.0	0.317	0.324	0.202	0.311	-0.0046

Beam Details



Beam Intensities from 1-20m																				
m	1	2	3	4	5	6	7	8	9	10	11	12	13	14	15	16	17	18	19	20
ft	3.3	6.6	9.8	13.1	16.4	19.7	23	26.2	29.5	32.8	36.1	39.4	42.7	45.9	49.2	52.5	55.8	59.1	62.3	65.6
lx	377115	94279	41902	23570	15085	10475	7696	5892	4656	3771	3117	2619	2231	1924	1676	1473	1305	1164	1045	943
fcd	35035.1	8758.8	3892.8	2189.7	1401.4	973.2	715	547.4	432.5	350.4	289.5	243.3	207.3	178.8	155.7	136.9	121.2	108.1	97.1	87.6

Intensities in 0° C-plane																			
0°	1°	2°	3°	4°	5°	6°	7°	8°	9°	10°	11°	12°	13°	14°	15°	16°	17°	18°	19°
377K	331K	231K	138K	77K	43K	23K	11K	5K	2K	0K	0K	0K	0K	0K	0K	0K	0K	0K	0K
100%	88%	61%	37%	20%	11%	6%	3%	1%	0%	0%	0%	0%	0%	0%	0%	0%	0%	0%	0%

Intensities in 90° C-plane																			
0°	1°	2°	3°	4°	5°	6°	7°	8°	9°	10°	11°	12°	13°	14°	15°	16°	17°	18°	19°
377K	331K	231K	138K	77K	43K	23K	11K	5K	2K	0K	0K	0K	0K	0K	0K	0K	0K	0K	0K
100%	88%	61%	37%	20%	11%	6%	3%	1%	0%	0%	0%	0%	0%	0%	0%	0%	0%	0%	0%

Intensities in 180° C-plane																			
0°	1°	2°	3°	4°	5°	6°	7°	8°	9°	10°	11°	12°	13°	14°	15°	16°	17°	18°	19°
377K	331K	231K	136K	74K	39K	19K	8K	3K	0K	0K	0K	0K	0K	0K	0K	0K	0K	0K	0K
100%	88%	61%	36%	20%	10%	5%	2%	1%	0%	0%	0%	0%	0%	0%	0%	0%	0%	0%	0%

Intensities in 270° C-plane																			
0°	1°	2°	3°	4°	5°	6°	7°	8°	9°	10°	11°	12°	13°	14°	15°	16°	17°	18°	19°
377K	331K	231K	136K	74K	39K	19K	8K	3K	0K	0K	0K	0K	0K	0K	0K	0K	0K	0K	0K
100%	88%	61%	36%	20%	10%	5%	2%	1%	0%	0%	0%	0%	0%	0%	0%	0%	0%	0%	0%

Beam Angle 50%	Field Angle 10%	Cutoff Angle 2,5%	Intensity Ratio in 120° Cone	Intensity Ratio in 90° Cone
4.8°	10.2°	14°	99.9%	99.9%