

COB Cannon Wash ST DW



Light Efficiency:

43 Lumen/Watt

Light Quality:

CRI: 94.5

Color Temperature:

5993 K

Output: 3551 lm

Peak: 4175 cd

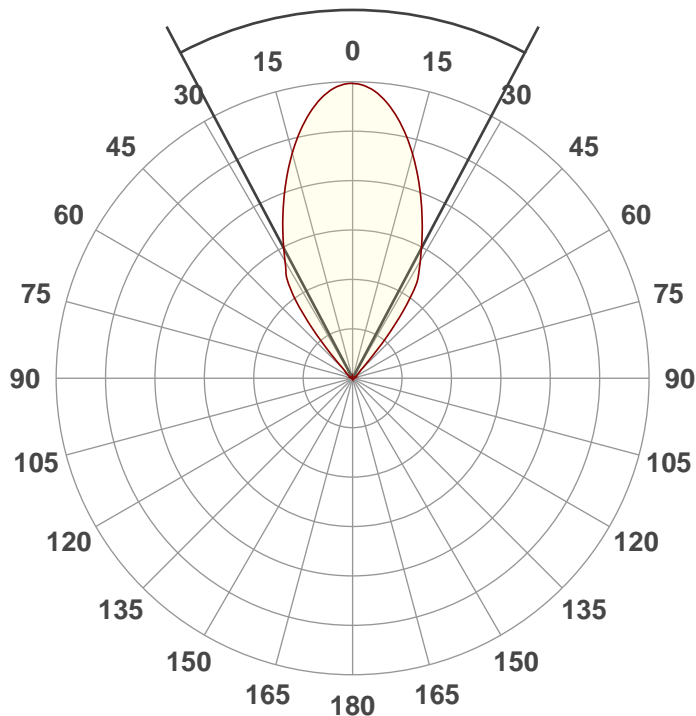
Power: 82.7 W

PF: 0.98



Beam Angle

55.8°



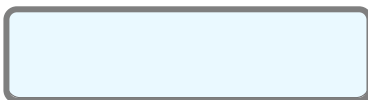
Test:

CW

Date:

9/28/2018

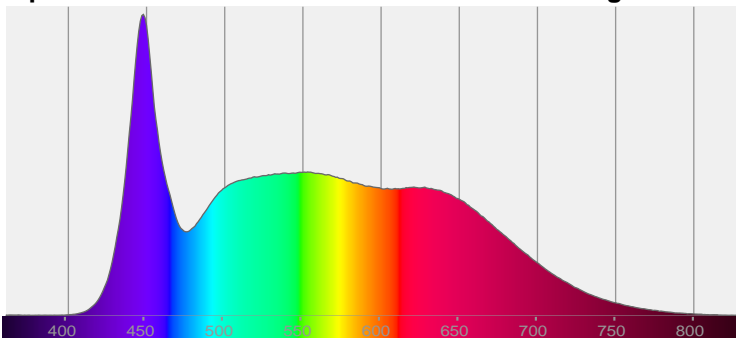
Note:



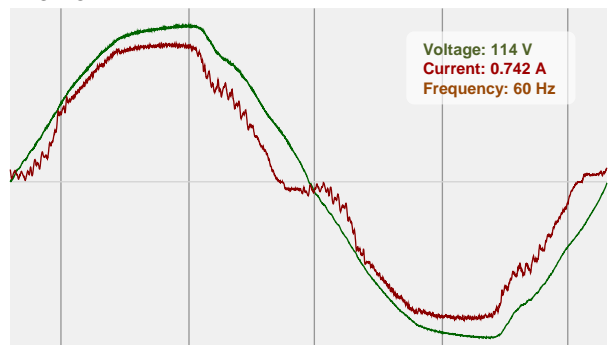
CIE 1931
x: 0.323
y: 0.327

Spectra

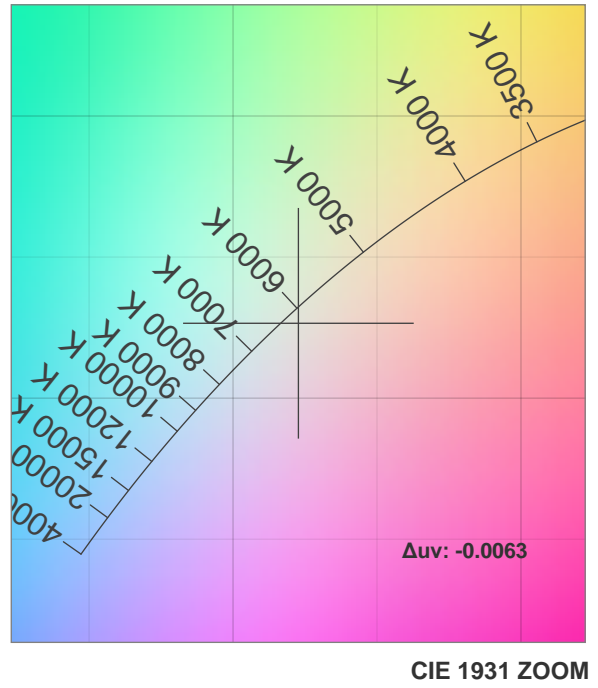
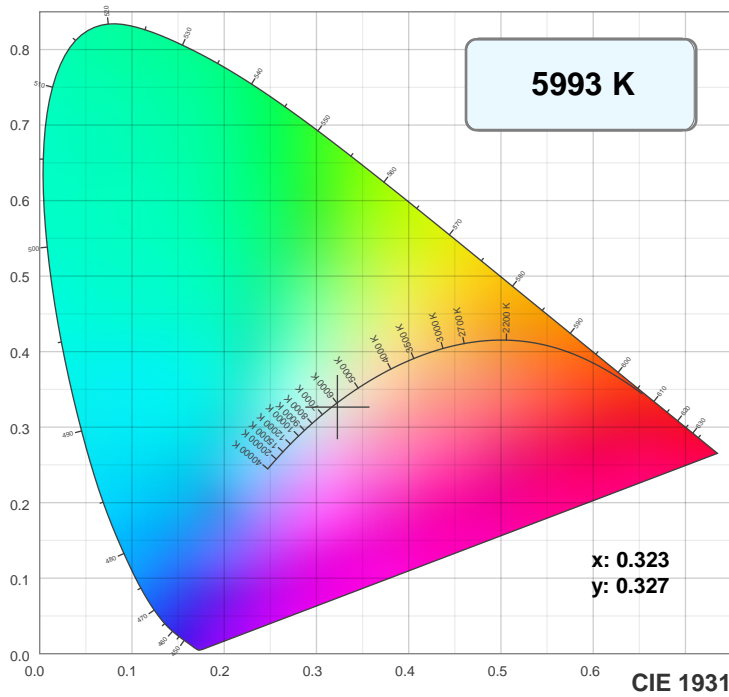
Dominant Wavelength: 829nm



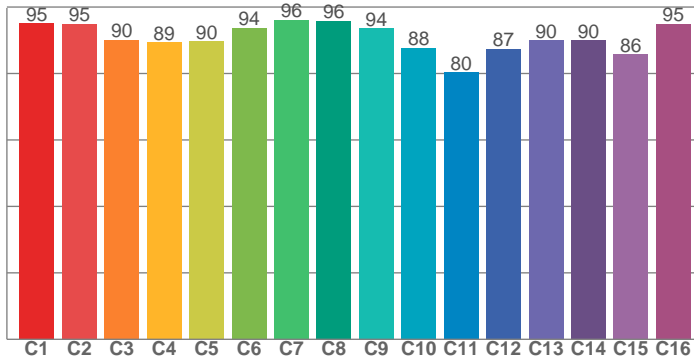
Power



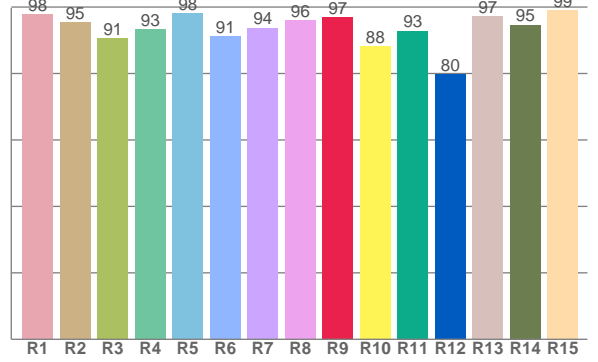
Color Details



TM30: 90.7



CRI: 94.5 (R1-R8)



CRI R values, only R1-R8 are used to calculate final CRI value

R1	R2	R3	R4	R5	R6	R7	R8	R9	R10	R11	R12	R13	R14	R15
97.9	95.3	90.7	93.4	98.0	91.3	93.8	95.9	96.8	88.3	92.9	79.8	97.2	94.7	99.1

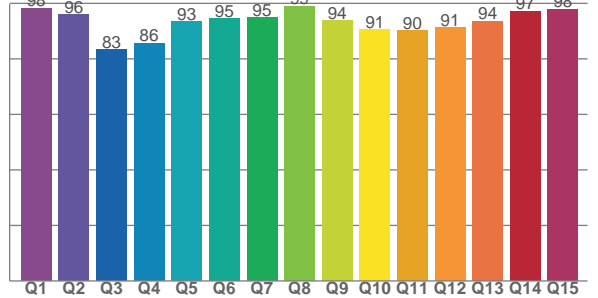
TM30 C values, 16 binned values out of total of 99 C values

C1	C2	C3	C4	C5	C6	C7	C8	C9	C10	C11	C12	C13	C14	C15	C16
95.1	94.9	90.2	89.4	89.6	93.7	96.1	95.8	93.6	87.7	80.2	87.4	90.0	90.0	85.7	95.0

CQS Q values

Q1	Q2	Q3	Q4	Q5	Q6	Q7	Q8	Q9	Q10	Q11	Q12	Q13	Q14	Q15
98.3	95.8	83.3	85.6	93.4	94.5	94.8	99.0	93.8	90.5	90.1	91.3	93.6	97.2	97.9

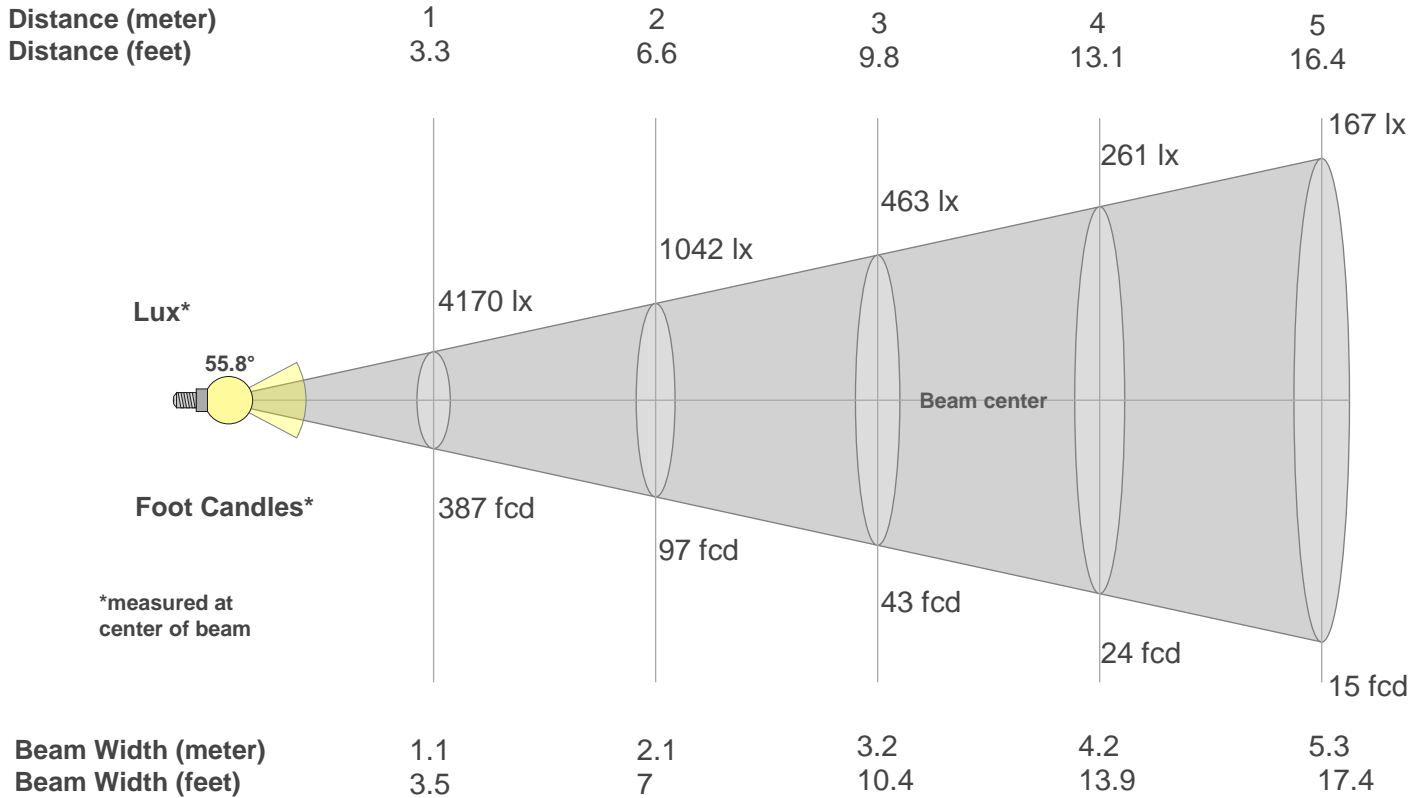
CQS: 92.0



Color Parameters

Color Temperature	Color Rendering Index	Red Component	Color Fidelity	Color Gamut	Color Quality Scale	Color Coordinate CIE 1931	Color Coordinate CIE 1931	Color Coordinate	Color Coordinate	Color Deviation from Black Body
CCT	CRI	CRI R9	TM30 Rf	TM30 Rg	CQS	x	y	u	v	Δuv
5993 K	94.5	96.8	90.7	103.5	92.0	0.323	0.327	0.206	0.312	-0.0063

Beam Details



Beam Intensities from 1-20m

m	1	2	3	4	5	6	7	8	9	10	11	12	13	14	15	16	17	18	19	20
ft	3.3	6.6	9.8	13.1	16.4	19.7	23	26.2	29.5	32.8	36.1	39.4	42.7	45.9	49.2	52.5	55.8	59.1	62.3	65.6
lx	4170	1042	463	261	167	116	85	65	51	42	34	29	25	21	19	16	14	13	12	10
fcd	387.4	96.8	43	24.2	15.5	10.8	7.9	6.1	4.8	3.9	3.2	2.7	2.3	2	1.7	1.5	1.3	1.2	1.1	1

Intensities in 0° C-plane

0°	2°	4°	6°	8°	10°	12°	14°	16°	18°	20°	22°	24°	26°	28°	30°	32°	34°	36°	38°
4170	4154	4104	4012	3887	3741	3577	3395	3205	3011	2815	2622	2434	2252	2077	1918	1778	1623	1383	1064
100%	100%	98%	96%	93%	90%	86%	81%	77%	72%	68%	63%	58%	54%	50%	46%	43%	39%	33%	26%

Intensities in 90° C-plane

0°	2°	4°	6°	8°	10°	12°	14°	16°	18°	20°	22°	24°	26°	28°	30°	32°	34°	36°	38°
4170	4154	4104	4012	3887	3741	3577	3395	3205	3011	2815	2622	2434	2252	2077	1918	1778	1623	1383	1064
100%	100%	98%	96%	93%	90%	86%	81%	77%	72%	68%	63%	58%	54%	50%	46%	43%	39%	33%	26%

Intensities in 180° C-plane

0°	2°	4°	6°	8°	10°	12°	14°	16°	18°	20°	22°	24°	26°	28°	30°	32°	34°	36°	38°
4170	4152	4092	3994	3870	3726	3559	3378	3190	2997	2803	2612	2425	2247	2078	1920	1768	1614	1332	1016
100%	100%	98%	96%	93%	89%	85%	81%	77%	72%	67%	63%	58%	54%	50%	46%	42%	39%	32%	24%

Intensities in 270° C-plane

0°	2°	4°	6°	8°	10°	12°	14°	16°	18°	20°	22°	24°	26°	28°	30°	32°	34°	36°	38°
4170	4152	4092	3994	3870	3726	3559	3378	3190	2997	2803	2612	2425	2247	2078	1920	1768	1614	1332	1016
100%	100%	98%	96%	93%	89%	85%	81%	77%	72%	67%	63%	58%	54%	50%	46%	42%	39%	32%	24%

Beam Angle 50%	Field Angle 10%	Cutoff Angle 2,5%	Intensity Ratio in 120° Cone	Intensity Ratio in 90° Cone
55.8°	84.1°	102.8°	99.1%	95.4%