

Vizi CMY 16RX



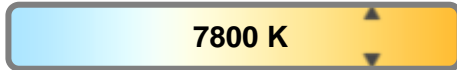
Light Efficiency:



Light Quality:



Color Temperature:



Output: 11700 lm

Peak: 827853 cd

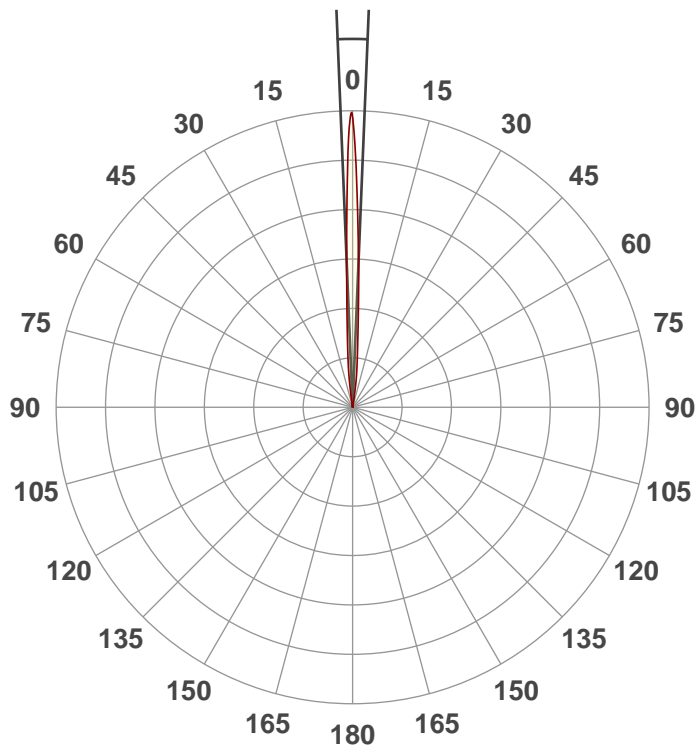
Power: 432.1 W

PF: 1.0



Beam Angle

4.7°



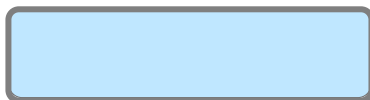
Test:

Zoom In

Date:

2/22/2019

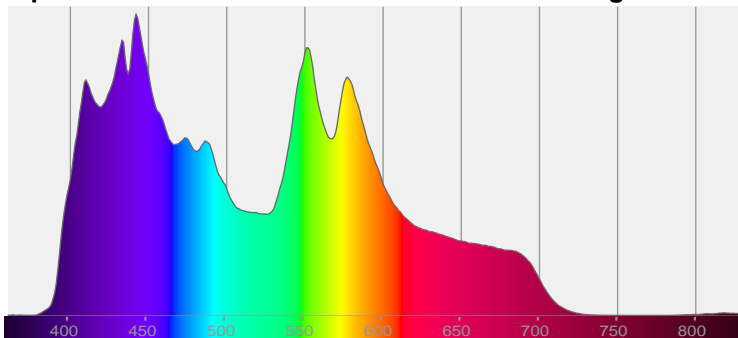
Note:



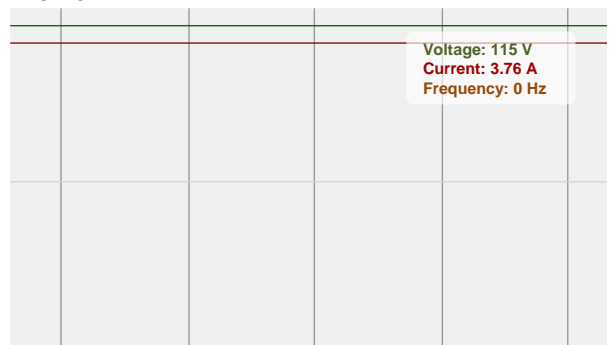
CIE 1931
x: 0.298
y: 0.303

Spectra

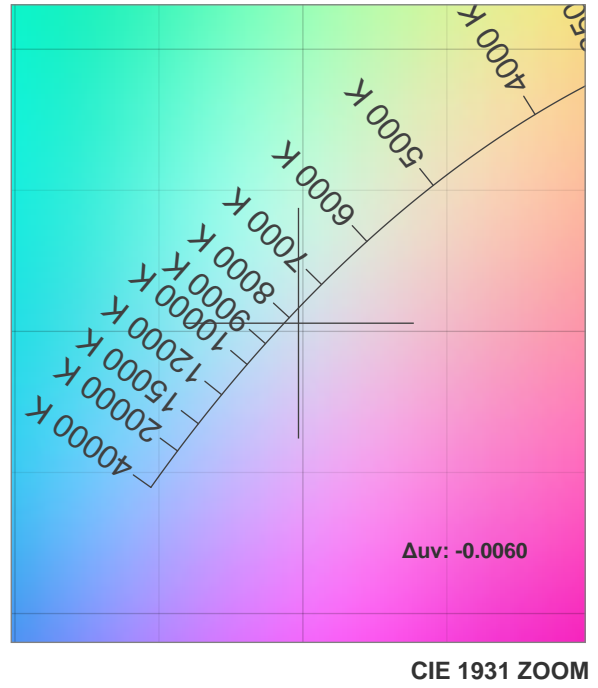
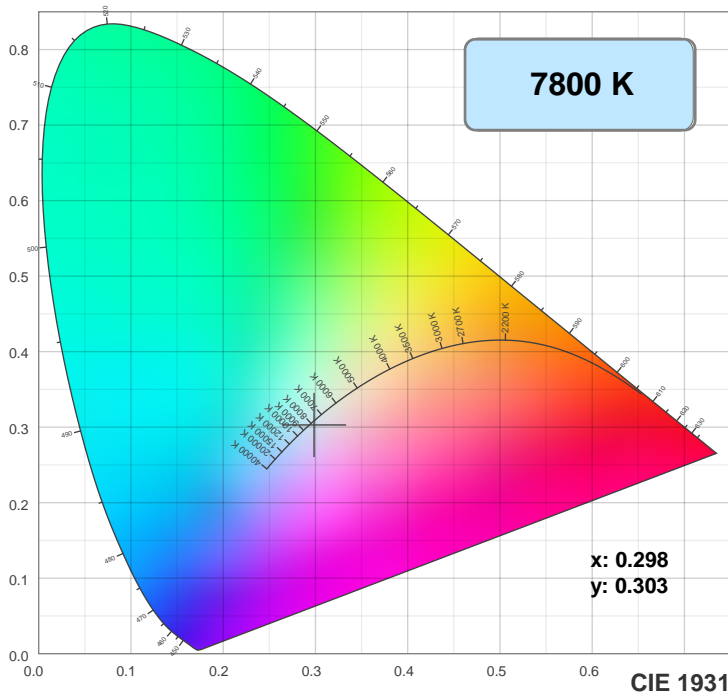
Dominant Wavelength: 458nm



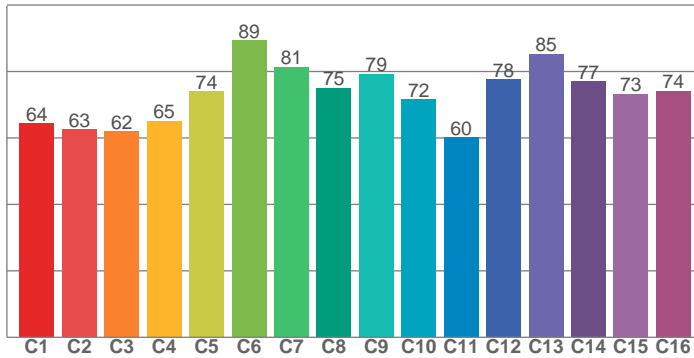
Power



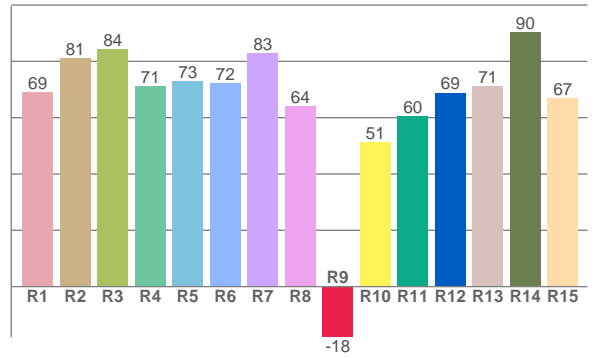
Color Details



TM30: 73.2



CRI: 74.7 (R1-R8)



CRI R values, only R1-R8 are used to calculate final CRI value

R1	R2	R3	R4	R5	R6	R7	R8	R9	R10	R11	R12	R13	R14	R15
69.0	81.1	84.4	71.2	72.9	72.3	82.9	64.0	-18.0	51.4	60.5	68.8	71.2	90.4	66.8

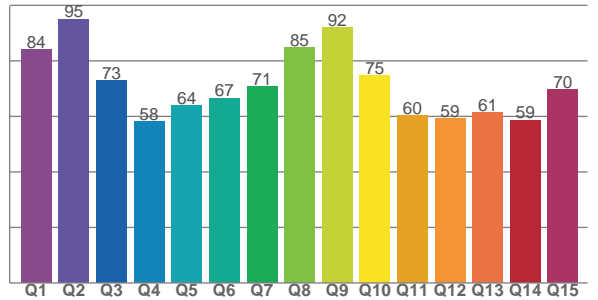
TM30 C values, 16 binned values out of total of 99 C values

C1	C2	C3	C4	C5	C6	C7	C8	C9	C10	C11	C12	C13	C14	C15	C16
64.4	62.5	62.0	65.1	74.0	89.3	81.4	75.0	79.3	71.6	60.2	77.6	85.2	77.0	73.2	74.2

CQS Q values

Q1	Q2	Q3	Q4	Q5	Q6	Q7	Q8	Q9	Q10	Q11	Q12	Q13	Q14	Q15
84.1	95.0	73.0	58.2	63.9	66.6	70.7	84.7	92.0	74.7	60.2	59.2	61.3	58.6	69.5

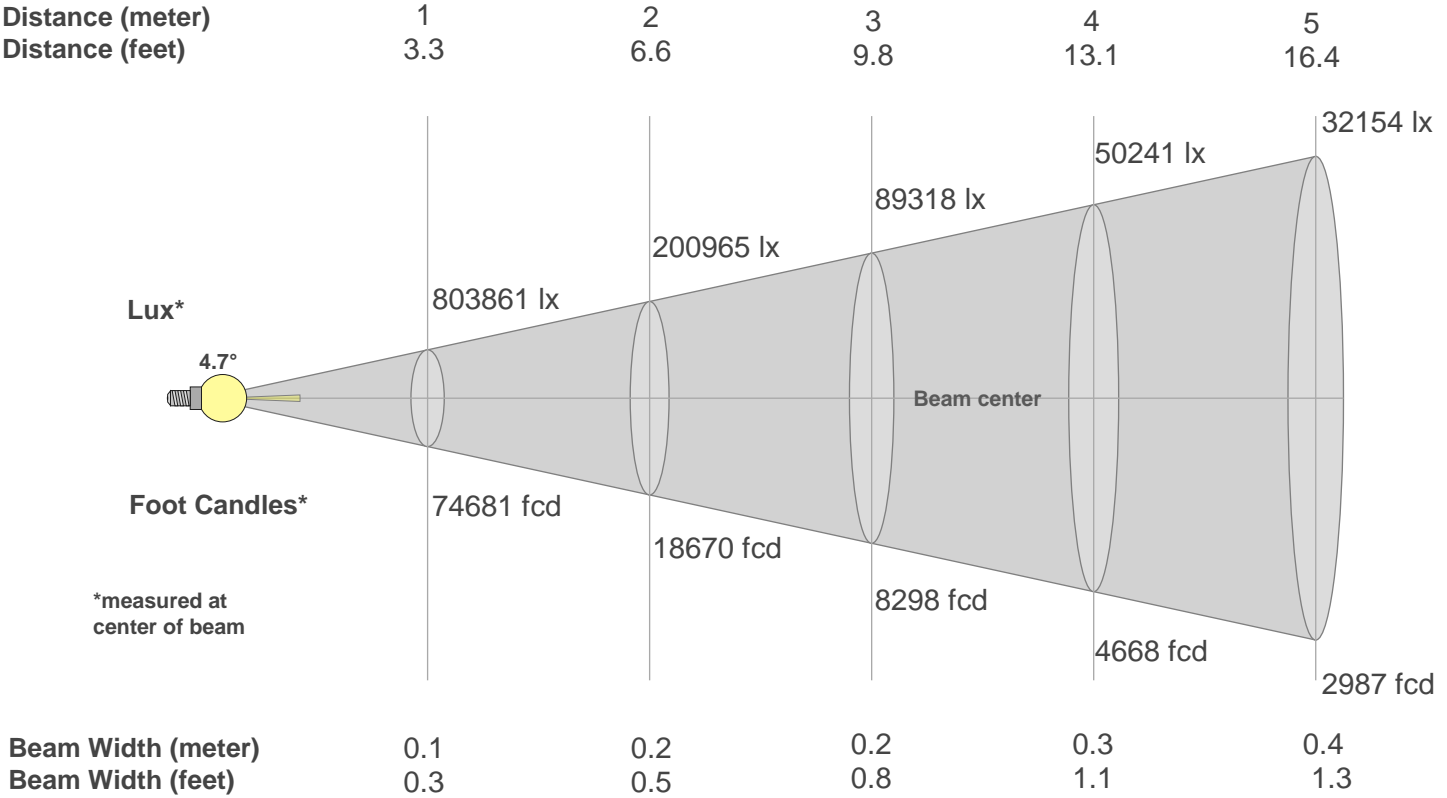
CQS: 69.0



Color Parameters

Color Temperature	Color Rendering Index	Red Component	Color Fidelity	Color Gamut	Color Quality Scale	Color Coordinate CIE 1931	Color Coordinate CIE 1931	Color Coordinate	Color Coordinate	Color Deviation from Black Body
CCT	CRI	CRI R9	TM30 Rf	TM30 Rg	CQS	x	y	u	v	Δuv
7800 K	74.7	-18.0	73.2	90.7	69.0	0.298	0.303	0.198	0.301	-0.0060

Beam Details



Lux*

4.7°

Foot Candles*

*measured at center of beam

803861 lx

200965 lx

89318 lx

50241 lx

32154 lx

74681 fcd

18670 fcd

8298 fcd

4668 fcd

2987 fcd

Beam center

Beam Width (meter)

Beam Width (feet)

0.1

0.3

0.2

0.5

0.2

0.8

0.3

1.1

0.4

1.3

Beam Intensities from 1-20m																				
m	1	2	3	4	5	6	7	8	9	10	11	12	13	14	15	16	17	18	19	20
ft	3.3	6.6	9.8	13.1	16.4	19.7	23	26.2	29.5	32.8	36.1	39.4	42.7	45.9	49.2	52.5	55.8	59.1	62.3	65.6
lx	803861	200965	89318	50241	32154	22329	16405	12560	9924	8039	6643	5582	4757	4101	3573	3140	2782	2481	2227	2010
fcd	74681	18670.3	8297.9	4667.6	2987.2	2074.5	1524.1	1166.9	922	746.8	617.2	518.6	441.9	381	331.9	291.7	258.4	230.5	206.9	186.7

Intensities in 0° C-plane																			
0°	1°	2°	3°	4°	5°	6°	7°	8°	9°	10°	11°	12°	13°	14°	15°	16°	17°	18°	19°
804K	722K	481K	313K	216K	155K	113K	71K	33K	16K	6K	0K	0K	0K	0K	0K	0K	0K	0K	0K
100%	90%	60%	39%	27%	19%	14%	9%	4%	2%	1%	0%	0%	0%	0%	0%	0%	0%	0%	0%

Intensities in 90° C-plane																			
0°	1°	2°	3°	4°	5°	6°	7°	8°	9°	10°	11°	12°	13°	14°	15°	16°	17°	18°	19°
804K	722K	481K	313K	216K	155K	113K	71K	33K	16K	6K	0K	0K	0K	0K	0K	0K	0K	0K	0K
100%	90%	60%	39%	27%	19%	14%	9%	4%	2%	1%	0%	0%	0%	0%	0%	0%	0%	0%	0%

Intensities in 180° C-plane																			
0°	1°	2°	3°	4°	5°	6°	7°	8°	9°	10°	11°	12°	13°	14°	15°	16°	17°	18°	19°
804K	640K	461K	323K	220K	159K	120K	90K	55K	20K	7K	0K	0K	0K	0K	0K	0K	0K	0K	0K
100%	80%	57%	40%	27%	20%	15%	11%	7%	2%	1%	0%	0%	0%	0%	0%	0%	0%	0%	0%

Intensities in 270° C-plane																			
0°	1°	2°	3°	4°	5°	6°	7°	8°	9°	10°	11°	12°	13°	14°	15°	16°	17°	18°	19°
804K	640K	461K	323K	220K	159K	120K	90K	55K	20K	7K	0K	0K	0K	0K	0K	0K	0K	0K	0K
100%	80%	57%	40%	27%	20%	15%	11%	7%	2%	1%	0%	0%	0%	0%	0%	0%	0%	0%	0%

Beam Angle 50%	Field Angle 10%	Cutoff Angle 2,5%	Intensity Ratio in 120° Cone	Intensity Ratio in 90° Cone
4.7°	14°	17.6°	100.0%	100.0%