

MOD TW100



Light Efficiency:

24 Lumen/Watt

Light Quality:

CRI: 95.7

Color Temperature:

2728 K

Output: 1392 lm

Peak: 2518 cd

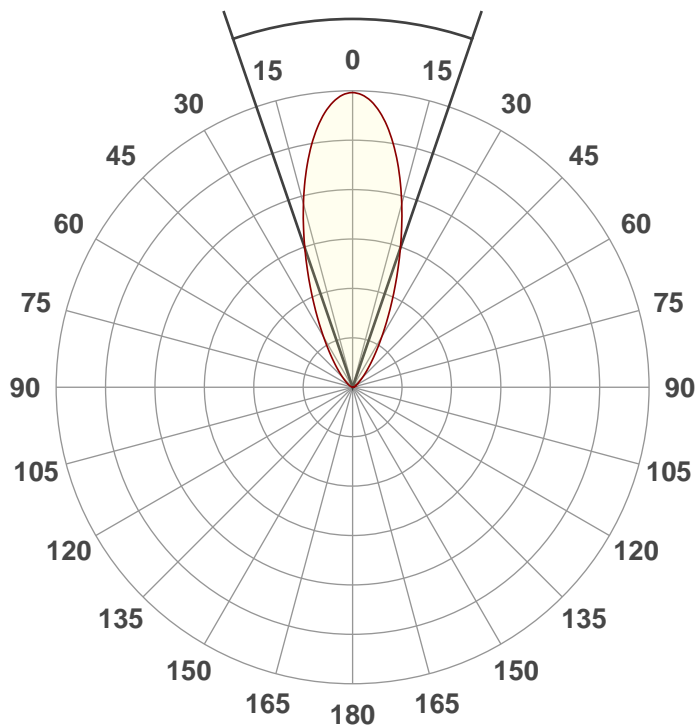
Power: 58.6 W

PF: 0.64



Beam Angle

37.9°



Test:

60Deg WW

Date:

11/27/2018

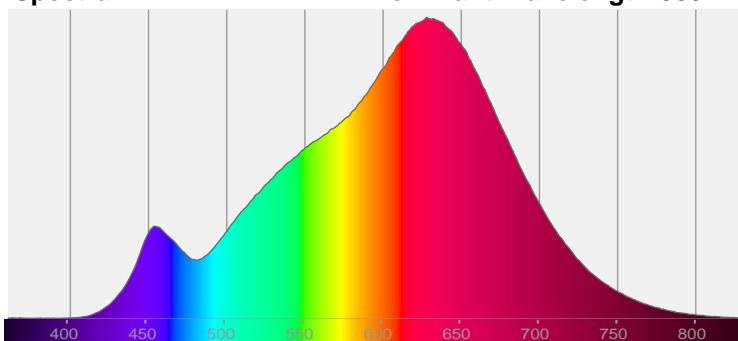
Note:



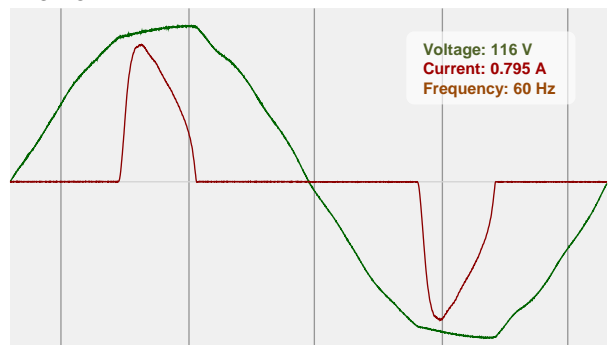
CIE 1931
x: 0.457
y: 0.408

Spectra

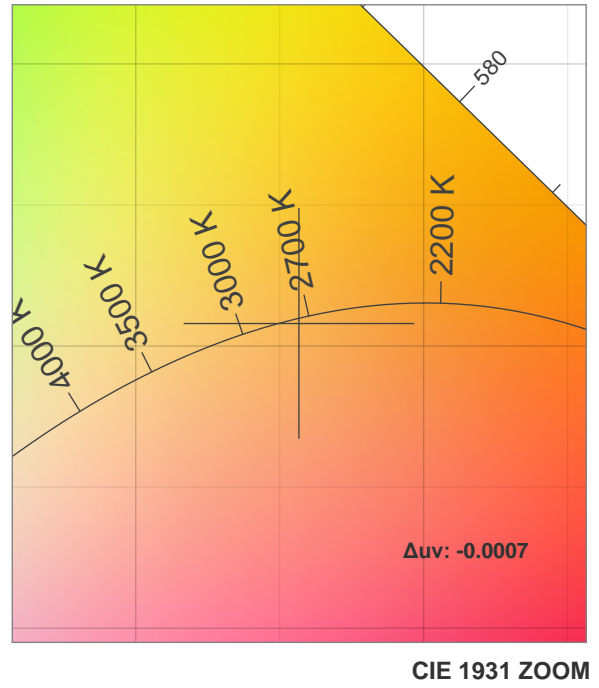
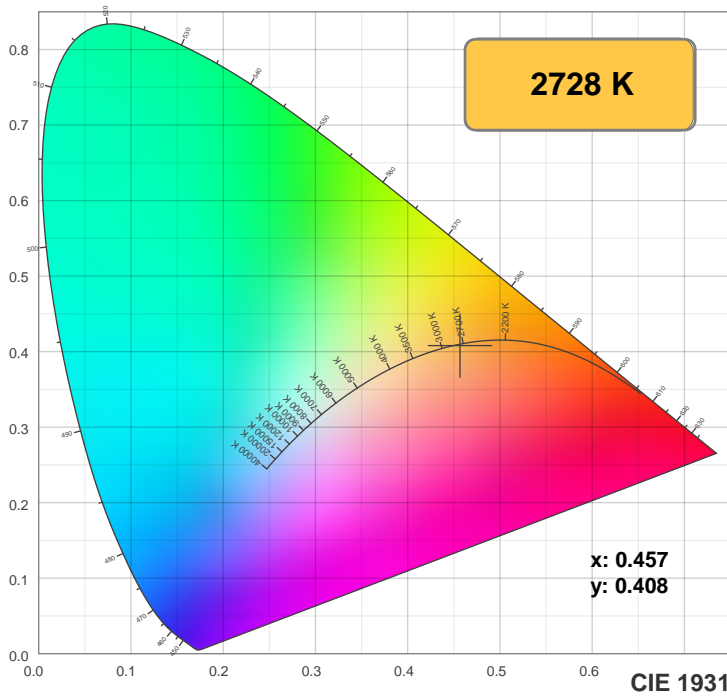
Dominant Wavelength: 585nm



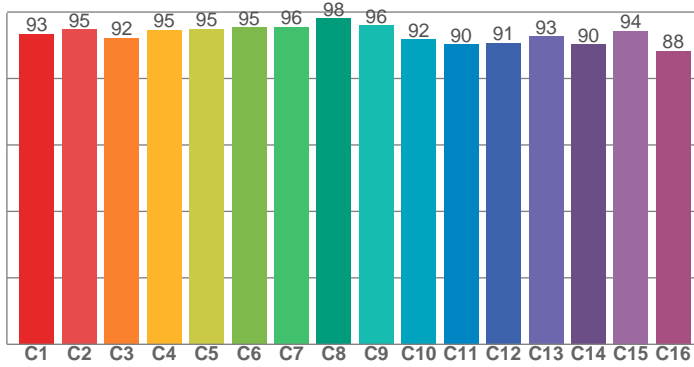
Power



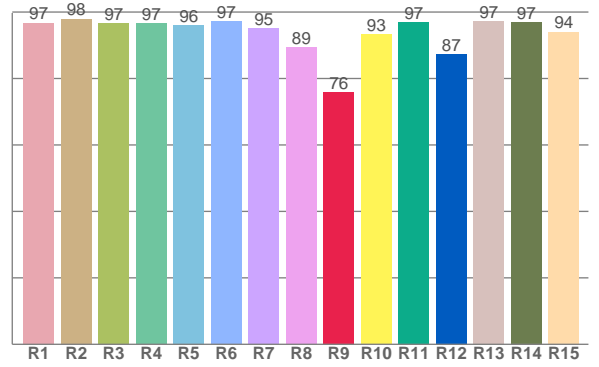
Color Details



TM30: 93.2



CRI: 95.7 (R1-R8)



CRI R values, only R1-R8 are used to calculate final CRI value

R1	R2	R3	R4	R5	R6	R7	R8	R9	R10	R11	R12	R13	R14	R15
96.8	97.9	96.7	96.5	96.1	97.2	95.0	89.3	75.9	93.2	96.9	87.3	97.2	97.0	94.1

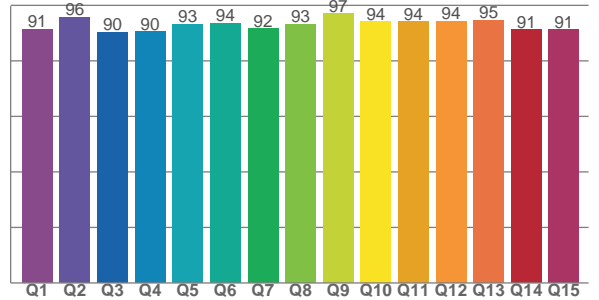
TM30 C values, 16 binned values out of total of 99 C values

C1	C2	C3	C4	C5	C6	C7	C8	C9	C10	C11	C12	C13	C14	C15	C16
93.5	94.7	92.2	94.7	95.0	95.3	95.5	98.1	96.0	91.8	90.3	90.7	92.6	90.2	94.3	88.3

CQS Q values

Q1	Q2	Q3	Q4	Q5	Q6	Q7	Q8	Q9	Q10	Q11	Q12	Q13	Q14	Q15
91.5	95.7	90.4	90.4	93.3	93.6	91.7	93.3	97.0	94.1	94.0	94.3	94.7	91.3	91.1

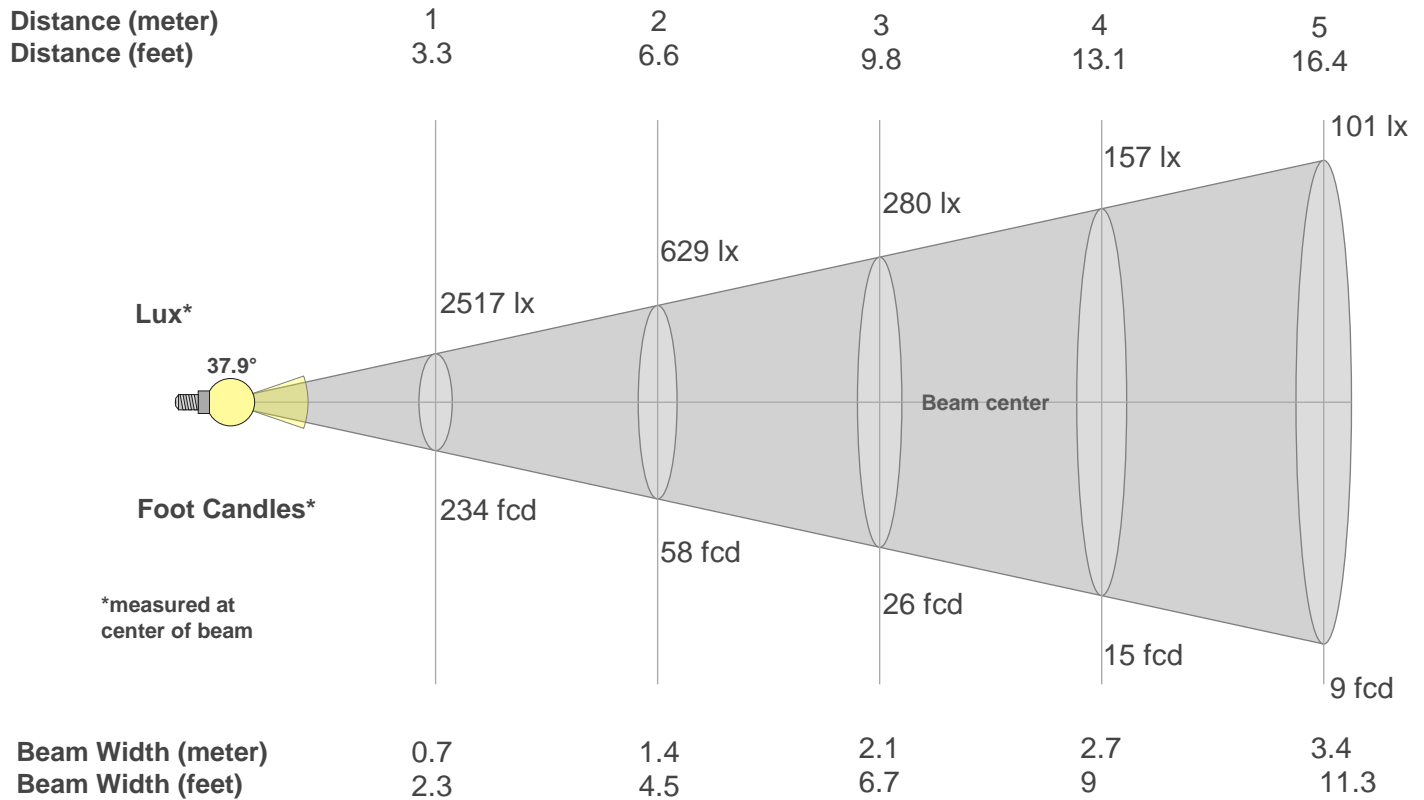
CQS: 92.7



Color Parameters

Color Temperature	Color Rendering Index	Red Component	Color Fidelity	Color Gamut	Color Quality Scale	Color Coordinate CIE 1931	Color Coordinate CIE 1931	Color Coordinate	Color Coordinate	Color Deviation from Black Body
CCT	CRI	CRI R9	TM30 Rf	TM30 Rg	CQS	x	y	u	v	Δuv
2728 K	95.7	75.9	93.2	100.5	92.7	0.457	0.408	0.262	0.351	-0.0007

Beam Details



Beam Intensities from 1-20m

m	1	2	3	4	5	6	7	8	9	10	11	12	13	14	15	16	17	18	19	20
ft	3.3	6.6	9.8	13.1	16.4	19.7	23	26.2	29.5	32.8	36.1	39.4	42.7	45.9	49.2	52.5	55.8	59.1	62.3	65.6
lx	2517	629	280	157	101	70	51	39	31	25	21	17	15	13	11	10	9	8	7	6
fcd	233.8	58.5	26	14.6	9.4	6.5	4.8	3.7	2.9	2.3	1.9	1.6	1.4	1.2	1	0.9	0.8	0.7	0.6	0.6

Intensities in 0° C-plane

0°	2°	4°	6°	8°	10°	12°	14°	16°	18°	20°	22°	24°	26°	28°	30°	32°	34°	36°	38°
2517	2498	2439	2345	2219	2069	1898	1717	1529	1344	1166	1000	848	714	596	496	411	341	281	233
100%	99%	97%	93%	88%	82%	75%	68%	61%	53%	46%	40%	34%	28%	24%	20%	16%	14%	11%	9%

Intensities in 90° C-plane

0°	2°	4°	6°	8°	10°	12°	14°	16°	18°	20°	22°	24°	26°	28°	30°	32°	34°	36°	38°
2517	2498	2439	2345	2219	2069	1898	1717	1529	1344	1166	1000	848	714	596	496	411	341	281	233
100%	99%	97%	93%	88%	82%	75%	68%	61%	53%	46%	40%	34%	28%	24%	20%	16%	14%	11%	9%

Intensities in 180° C-plane

0°	2°	4°	6°	8°	10°	12°	14°	16°	18°	20°	22°	24°	26°	28°	30°	32°	34°	36°	38°
2517	2495	2436	2341	2217	2066	1897	1715	1528	1344	1167	1002	851	718	601	501	416	344	285	236
100%	99%	97%	93%	88%	82%	75%	68%	61%	53%	46%	40%	34%	29%	24%	20%	17%	14%	11%	9%

Intensities in 270° C-plane

0°	2°	4°	6°	8°	10°	12°	14°	16°	18°	20°	22°	24°	26°	28°	30°	32°	34°	36°	38°
2517	2495	2436	2341	2217	2066	1897	1715	1528	1344	1167	1002	851	718	601	501	416	344	285	236
100%	99%	97%	93%	88%	82%	75%	68%	61%	53%	46%	40%	34%	29%	24%	20%	17%	14%	11%	9%

Beam Angle 50%	Field Angle 10%	Cutoff Angle 2,5%	Intensity Ratio in 120° Cone	Intensity Ratio in 90° Cone
37.9°	74.5°	105°	98.1%	91.8%