



Light Efficiency:

34 Lumen/Watt

Light Quality:

CRI: 67.8

Color Temperature:

16000 K

Output: 2009 lm

Peak: 9435 cd

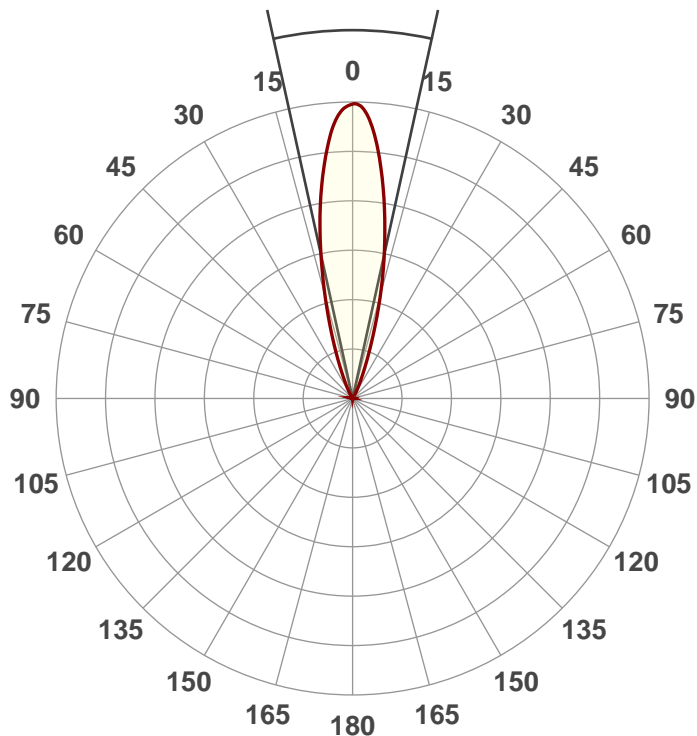
Power: 58.8 W

PF: 0.6



Beam Angle

24.8°



Product Name:

UB 12H

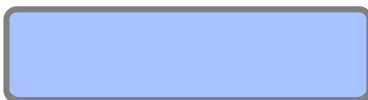
Test:

Full On No UV

Date:

4/19/2018

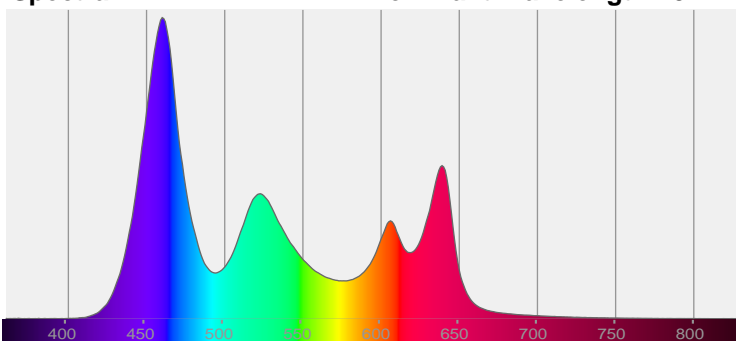
Note:



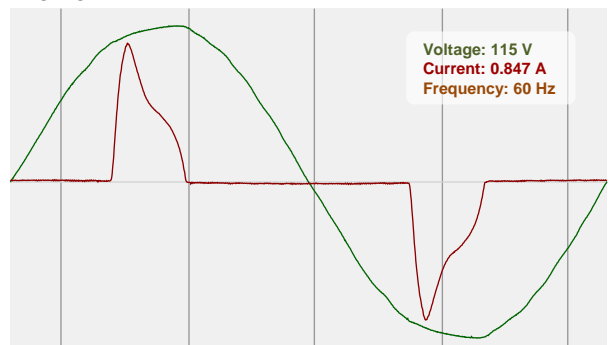
CIE 1931
x: 0.273
y: 0.252

Spectra

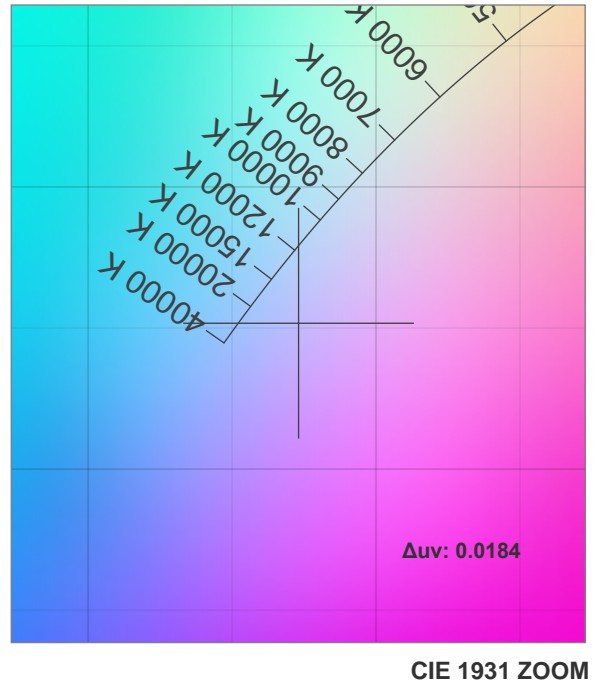
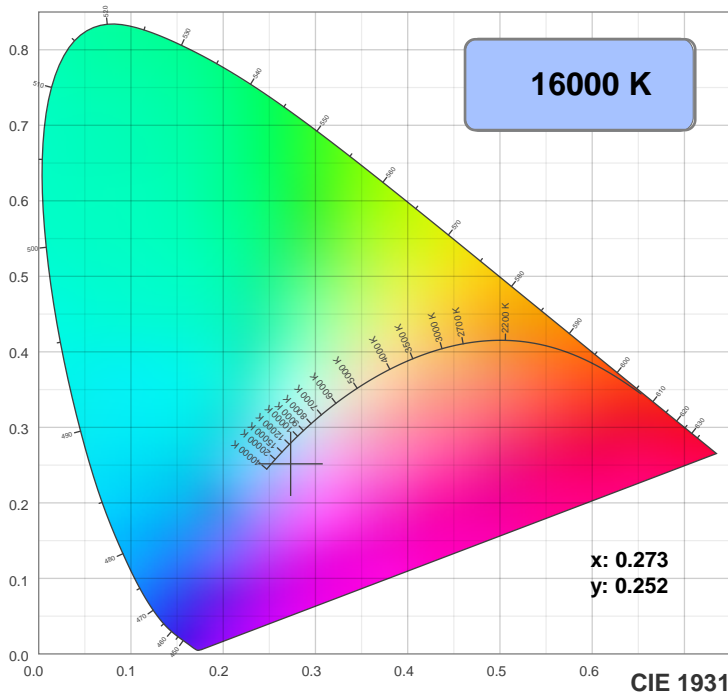
Dominant Wavelength: 452nm



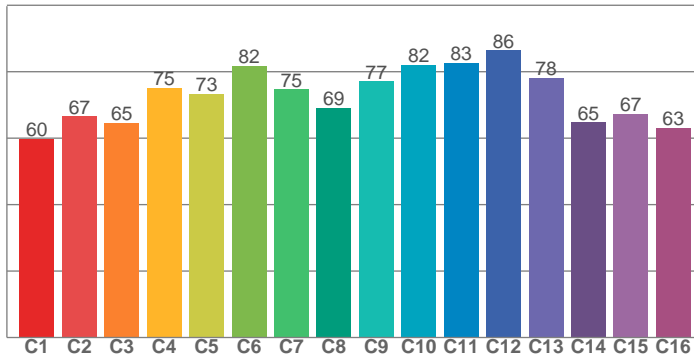
Power



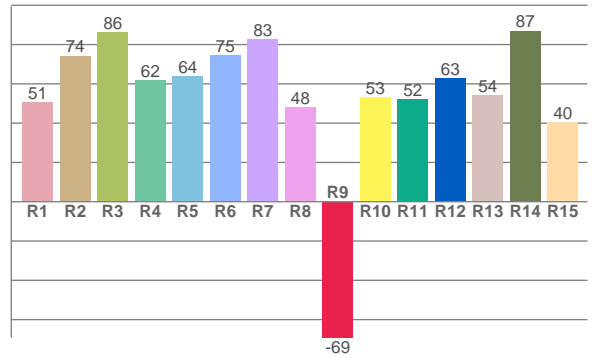
Color Details



TM30: 73.4



CRI: 67.8 (R1-R8)



CRI R values, only R1-R8 are used to calculate final CRI value

R1	R2	R3	R4	R5	R6	R7	R8	R9	R10	R11	R12	R13	R14	R15
50.8	74.3	86.3	61.8	63.7	74.7	82.7	48.3	-69.1	53.1	52.2	63.0	54.2	87.0	40.4

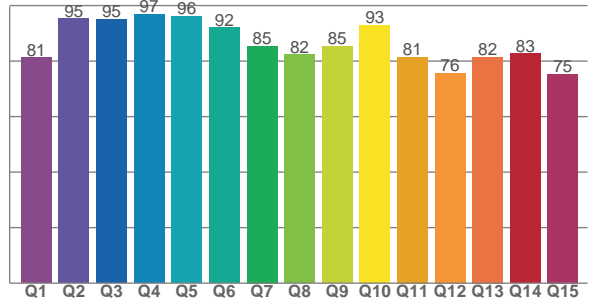
TM30 C values, 16 binned values out of total of 99 C values

C1	C2	C3	C4	C5	C6	C7	C8	C9	C10	C11	C12	C13	C14	C15	C16
59.7	66.5	64.6	75.2	73.4	81.9	74.7	69.0	77.1	82.2	82.7	86.4	78.2	64.8	67.4	63.0

CQS Q values

Q1	Q2	Q3	Q4	Q5	Q6	Q7	Q8	Q9	Q10	Q11	Q12	Q13	Q14	Q15
81.3	95.3	95.1	96.9	96.1	92.0	85.4	82.4	85.3	92.9	81.4	75.7	81.5	82.7	75.4

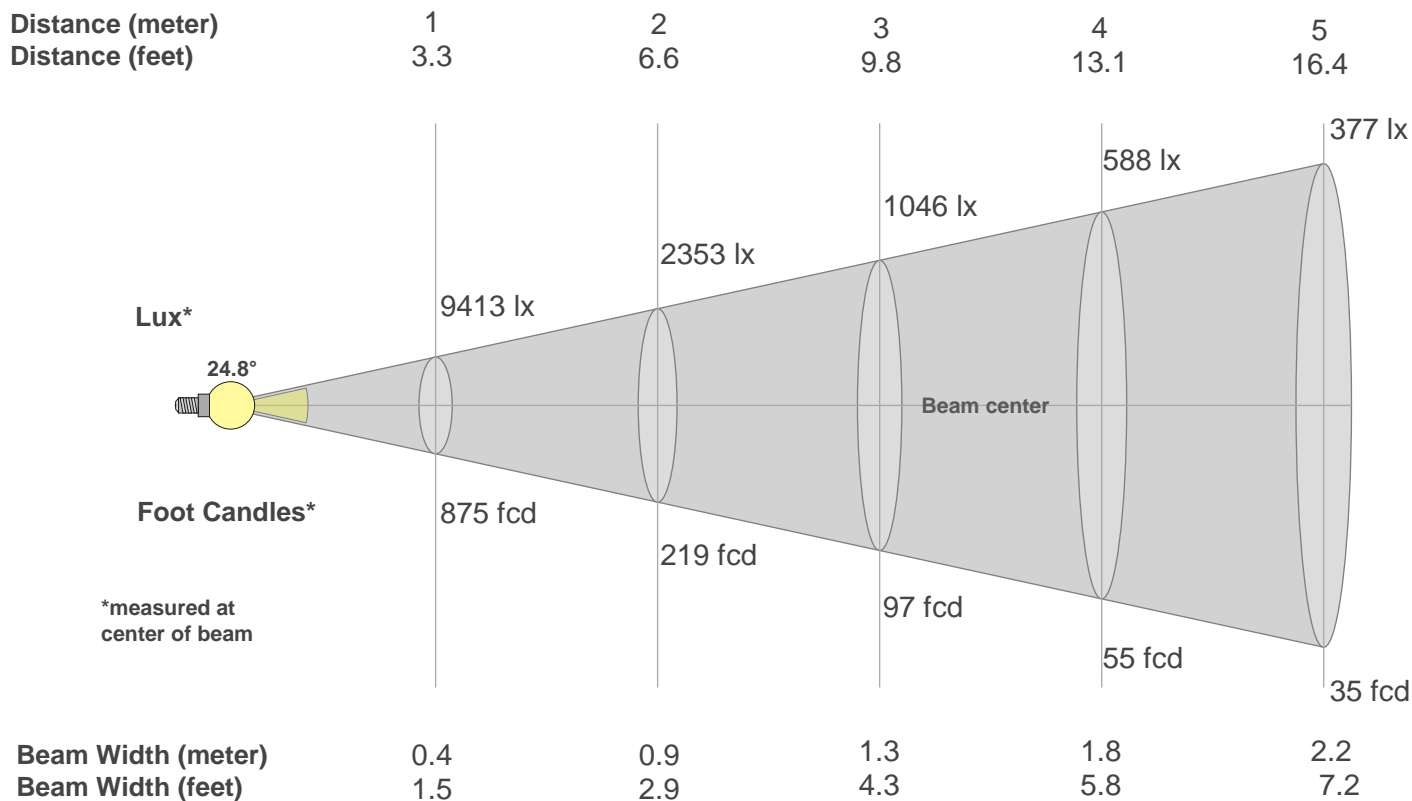
CQS: 84.8



Color Parameters

Color Temperature	Color Rendering Index	Red Component	Color Fidelity	Color Gamut	Color Quality Scale	Color Coordinate CIE 1931	Color Coordinate CIE 1931	Color Coordinate	Color Coordinate	Color Deviation from Black Body
CCT	CRI	CRI R9	TM30 Rf	TM30 Rg	CQS	x	y	u	v	Δuv
16000 K	67.8	-69.1	73.4	107.6	84.8	0.273	0.252	0.200	0.276	0.0184

Beam Details



Beam Intensities from 1-20m

m	1	2	3	4	5	6	7	8	9	10	11	12	13	14	15	16	17	18	19	20
ft	3.3	6.6	9.8	13.1	16.4	19.7	23	26.2	29.5	32.8	36.1	39.4	42.7	45.9	49.2	52.5	55.8	59.1	62.3	65.6
lx	9413	2353	1046	588	377	261	192	147	116	94	78	65	56	48	42	37	33	29	26	24
fcd	874.5	218.6	97.2	54.7	35	24.3	17.8	13.7	10.8	8.7	7.2	6.1	5.2	4.5	3.9	3.4	3	2.7	2.4	2.2

Intensities in 0° C-plane

0°	2°	4°	6°	8°	10°	12°	14°	16°	18°	20°	22°	24°	26°	28°	30°	32°	34°	36°	38°
9413	9251	8755	7955	7013	5998	4931	3901	2956	2160	1505	1012	660	426	277	178	119	81	62	48
100%	98%	93%	85%	74%	64%	52%	41%	31%	23%	16%	11%	7%	5%	3%	2%	1%	1%	1%	1%

Intensities in 90° C-plane

0°	2°	4°	6°	8°	10°	12°	14°	16°	18°	20°	22°	24°	26°	28°	30°	32°	34°	36°	38°
9413	9251	8755	7955	7013	5998	4931	3901	2956	2160	1505	1012	660	426	277	178	119	81	62	48
100%	98%	93%	85%	74%	64%	52%	41%	31%	23%	16%	11%	7%	5%	3%	2%	1%	1%	1%	1%

Intensities in 180° C-plane

0°	2°	4°	6°	8°	10°	12°	14°	16°	18°	20°	22°	24°	26°	28°	30°	32°	34°	36°	38°
9413	9300	8745	7916	6940	5918	4913	3940	2981	2128	1459	977	648	419	268	169	108	73	59	45
100%	99%	93%	84%	74%	63%	52%	42%	32%	23%	15%	10%	7%	4%	3%	2%	1%	1%	1%	0%

Intensities in 270° C-plane

0°	2°	4°	6°	8°	10°	12°	14°	16°	18°	20°	22°	24°	26°	28°	30°	32°	34°	36°	38°
9413	9300	8745	7916	6940	5918	4913	3940	2981	2128	1459	977	648	419	268	169	108	73	59	45
100%	99%	93%	84%	74%	63%	52%	42%	32%	23%	15%	10%	7%	4%	3%	2%	1%	1%	1%	0%

Beam Angle 50%	Field Angle 10%	Cutoff Angle 2,5%	Intensity Ratio in 120° Cone	Intensity Ratio in 90° Cone
24.8°	44.5°	57.2°	99.1%	98.4%